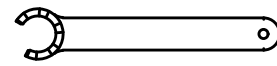




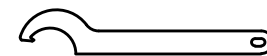
Ceramic Seal



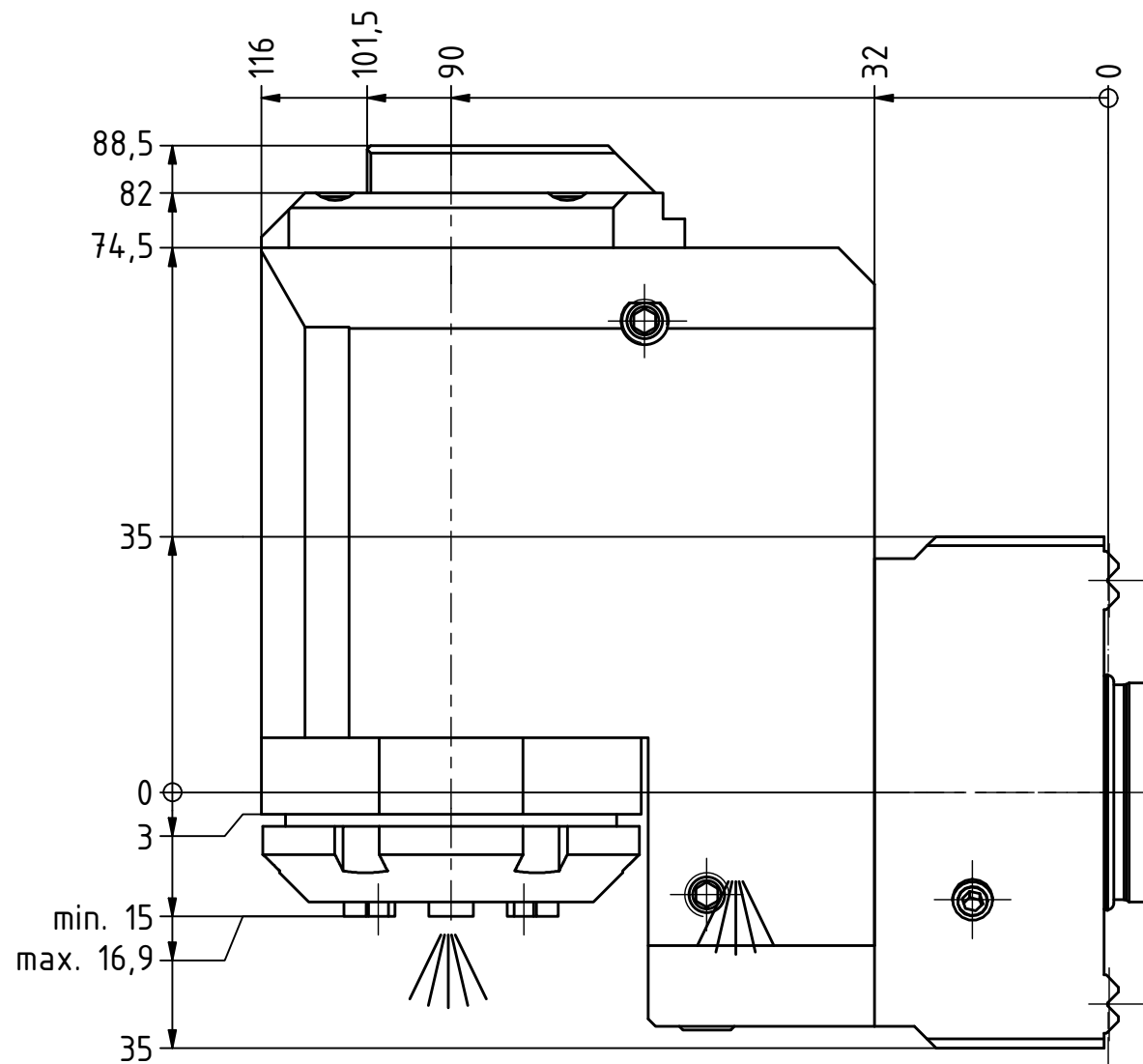
Tech Details



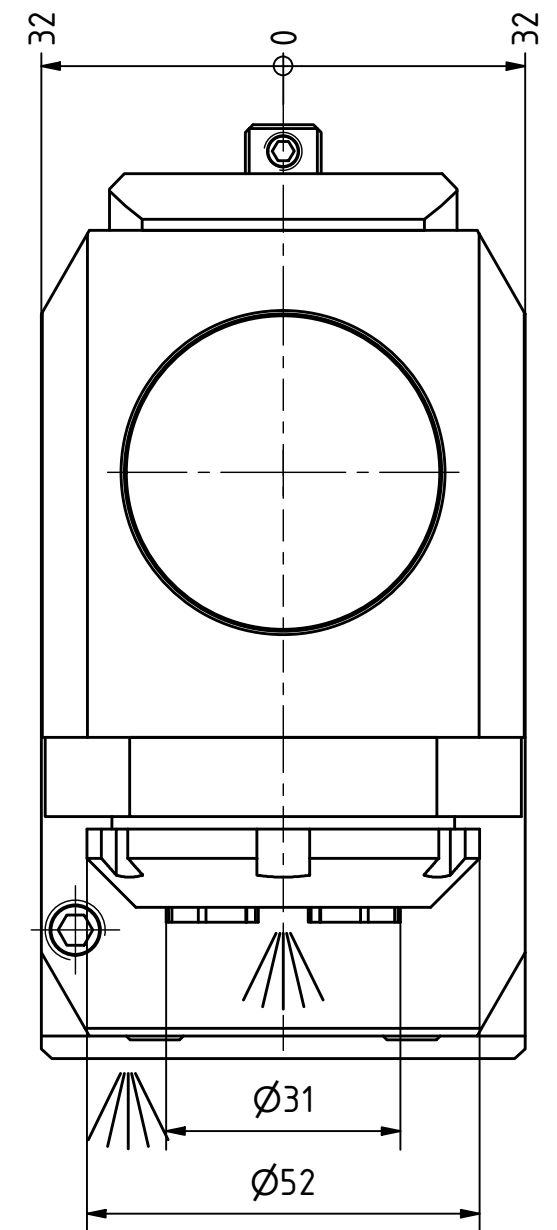
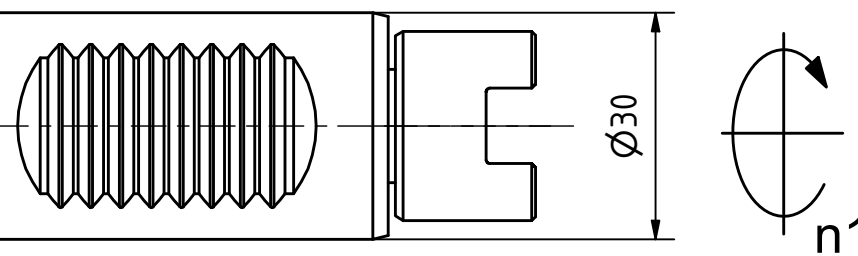
Spannzangenschlüssel für Hakenschlüssel  
innenliegende Mutter  
Clamping wrench for  
internal collet  
225AX



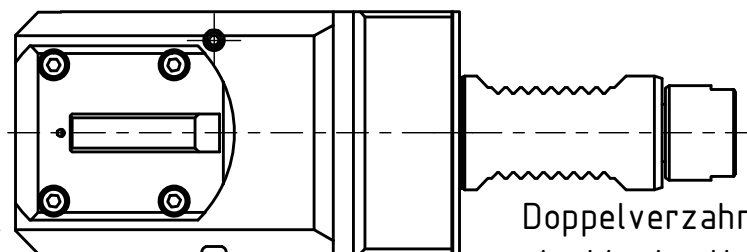
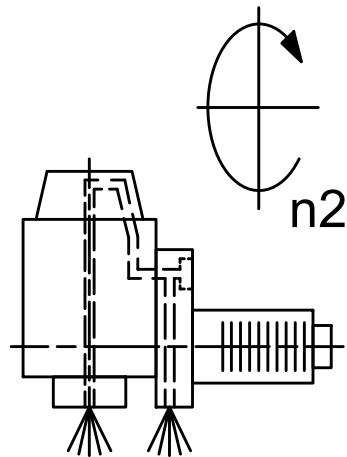
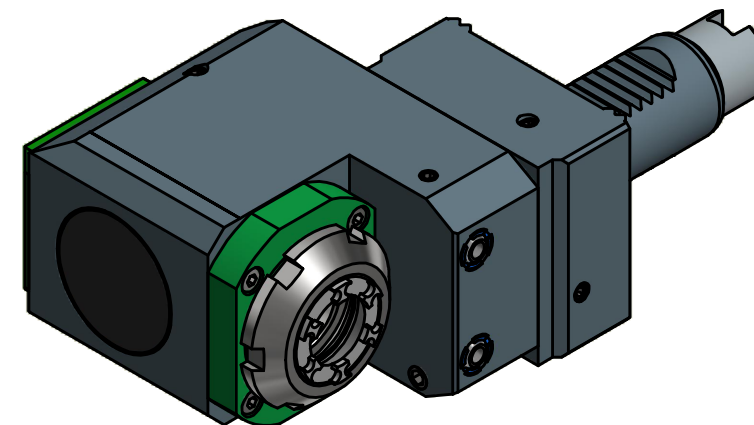
mit Nase  
Hook wrench with  
nose end  
DIN1810 A 52x55



W-Verzahnung Lizenz Index-Werke  
W-tooth system licence Index-Corporation



Spannzange / collet ER25 DIN6499  
Spannbereich / clamping range: 1,0 - 16,0



Doppelverzahnung Lizenz Traub  
double tooth system licence Traub

Innen- und Aussenkuehlung / Inside and outside coolant supply  
Kuehlmittelfiltrierung <math>< 50\mu</math> / coolant filtration <math>< 50\mu</math>

Copyright **EWS Tool Technologies**  
Weitergabe und Vervielfaeltigung dieser Unterlage,  
Verwertung und Mitteilung ihres Inhalts nicht  
gestattet, soweit nicht ausdrecklich zugestanden.  
Zuwiderhandlungen verpflichten zu Schadenersatz.

Bemerkung - Note  
Für Trockenlauf geeignet!  
Use without coolant fluid allowed!

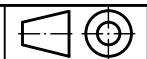
Technische Daten - technical data	
Weight	= 4.330 [kg]
Torque max. (M1/M2)	= 25 / 25 [Nm]
Speed max. (n1/n2)	= 8000 / 8000 [1/min]
Gear ratio (i)=n1:n2	= 1:1
Pressure (pmax)	= 70 [bar]

Benennung - Title  
**Radial Bohr und Fräskopf, zurückges**  
**Radial drill. and mill. head offset**



Nr. - No.  
**80.3025G300RLIKDWIM**

Technische Aenderungen vorbehalten!  
Subject to technical modifications!  
IDENT: DEWS130138



REV: -/A

MNR.  
**223017**

