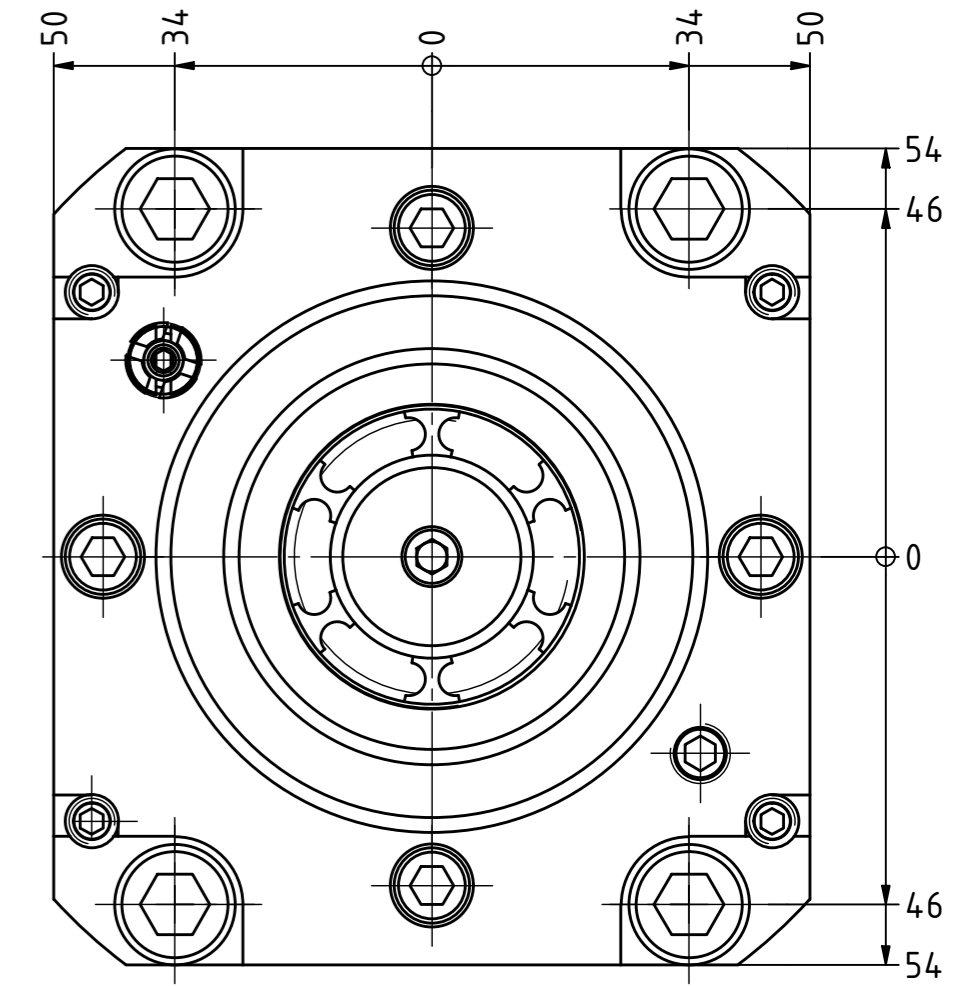
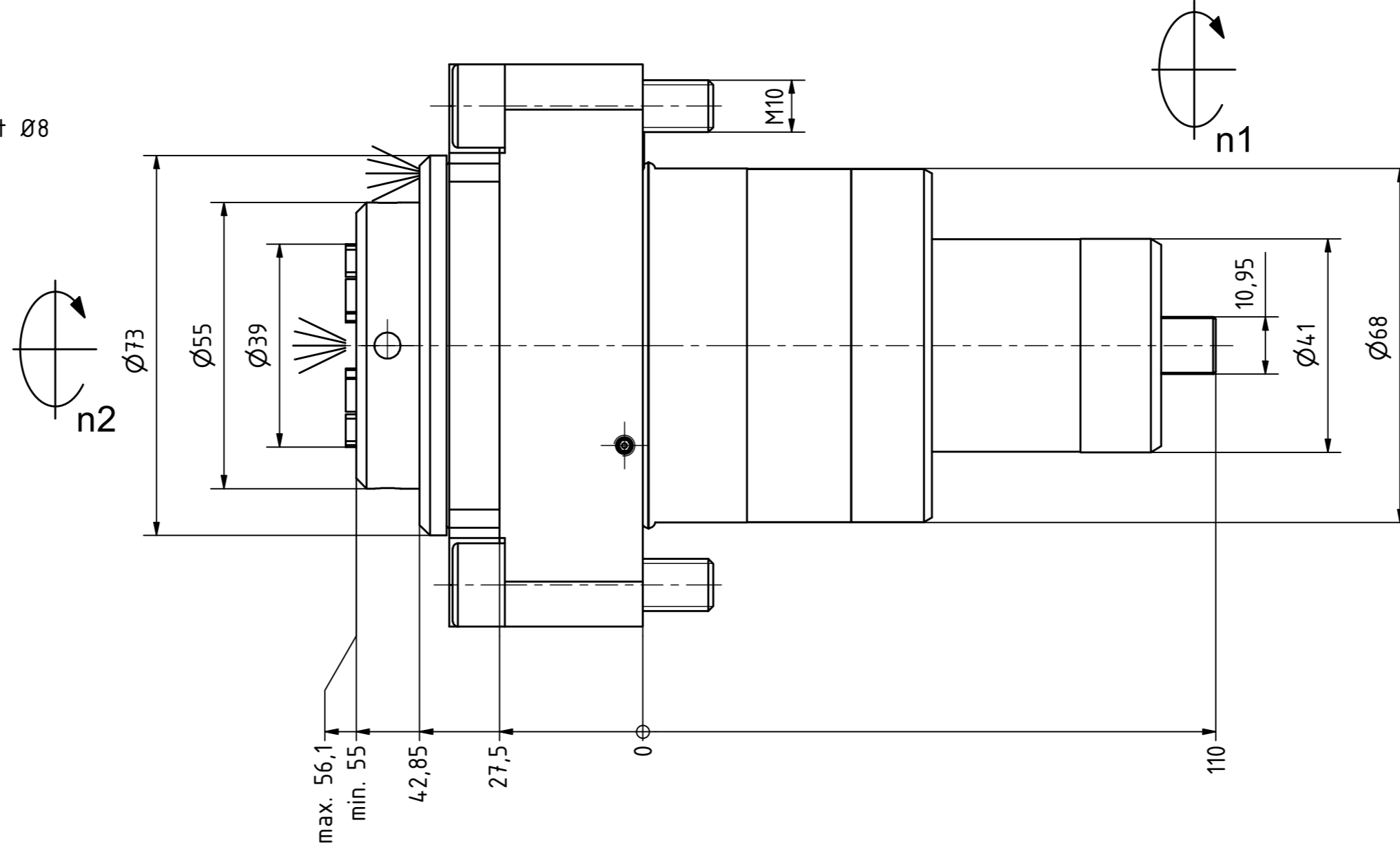
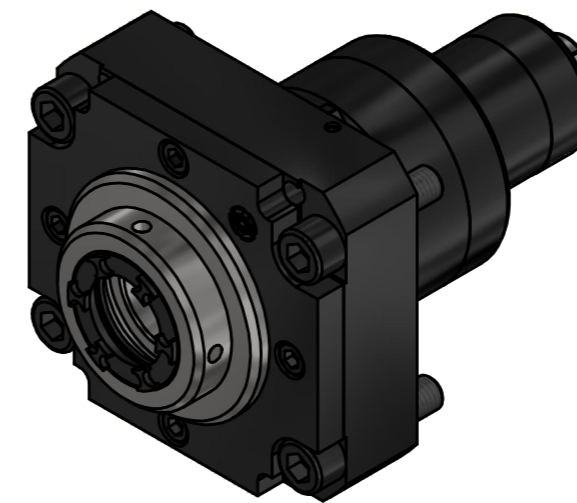


Paßstift Ø8

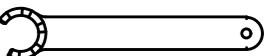


Spannzange / collet ER32 DIN6499
 Spannereich / clamping range: 2,0 - 20,0

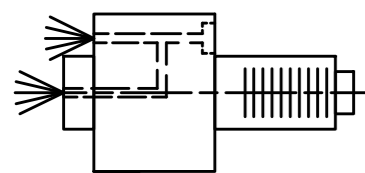
MMS - max. 10 bar
 MQL - max. 10 bar




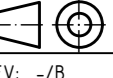

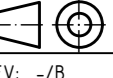

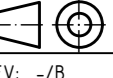

 Hakenschlüssel
 mit Zapfen
 Hook wrench
 with fixed pin
 DIN1810 B 52x55


 Spannzangenschlüssel für
 innenliegende Mutter
 Clamping wrench for
 internal collet
 232AX

Copyright **EWS Tool Technologies**
 Weitergabe und Vervielfältigung dieser Unterlage,
 Verwertung und Mitteilung ihres Inhalts nicht
 gestattet, soweit nicht ausdrücklich zugestanden.
 Zuwiderhandlungen verpflichten zu Schadenersatz.



Innen- und Aussenkuehlung / Inside and outside coolant supply
 Kuehlmittelfiltrierung=50µ / coolant filtration=50µ

Bemerkung - Note Für Trockenlauf geeignet! Use without coolant fluid allowed!	Technische Daten - technical data Weight = 7.043 [kg] Torque max. (M1/M2) = 80 / 80 [Nm] Speed max. (n1/n2) = 6000 / 6000 [1/min] Gear ratio (i)=n1:n2 = 1:1 Pressure (pmax) = 10 [bar]	Benennung - Title Axial Bohr und Fräskopf Axial drilling and milling head	<table border="1"> <tr> <td data-bbox="2226 1917 2463 1984">  EWS Weigle GmbH & Co. KG Maybachstr. 1 D-73066 Uhltingen www.ews-tools.de </td> <td data-bbox="2463 1917 2700 1984"> Technische Änderungen vorbehalten! Subject to technical modifications! IDENT: DEWS14.7687 </td> <td data-bbox="2700 1917 2929 1984">  REV: -/B MNR. </td> </tr> <tr> <td data-bbox="2226 1984 2463 2047"> Nr. - No. 40.6832VSC250CDIHKDMMSIM </td> <td data-bbox="2463 1984 2700 2047"> 166084 </td> <td data-bbox="2700 1984 2929 2047"> QR </td> </tr> </table>	 EWS Weigle GmbH & Co. KG Maybachstr. 1 D-73066 Uhltingen www.ews-tools.de	Technische Änderungen vorbehalten! Subject to technical modifications! IDENT: DEWS14.7687	 REV: -/B MNR.	Nr. - No. 40.6832VSC250CDIHKDMMSIM	166084	QR
 EWS Weigle GmbH & Co. KG Maybachstr. 1 D-73066 Uhltingen www.ews-tools.de	Technische Änderungen vorbehalten! Subject to technical modifications! IDENT: DEWS14.7687	 REV: -/B MNR.							
Nr. - No. 40.6832VSC250CDIHKDMMSIM	166084	QR							