




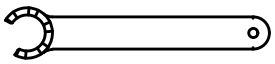
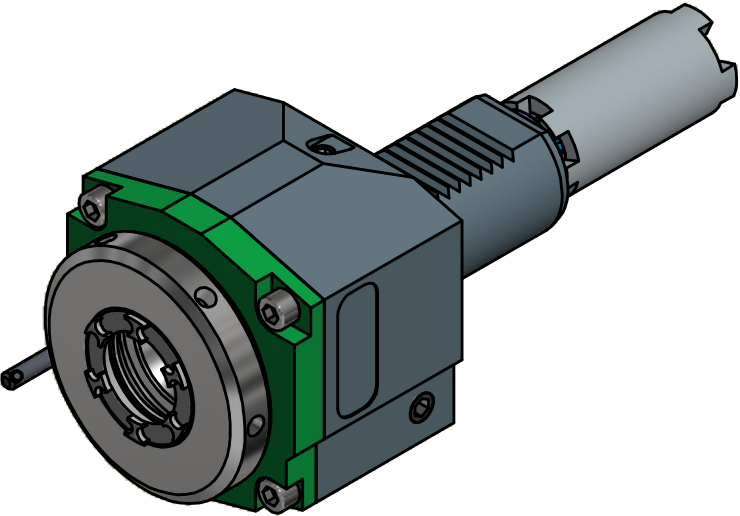
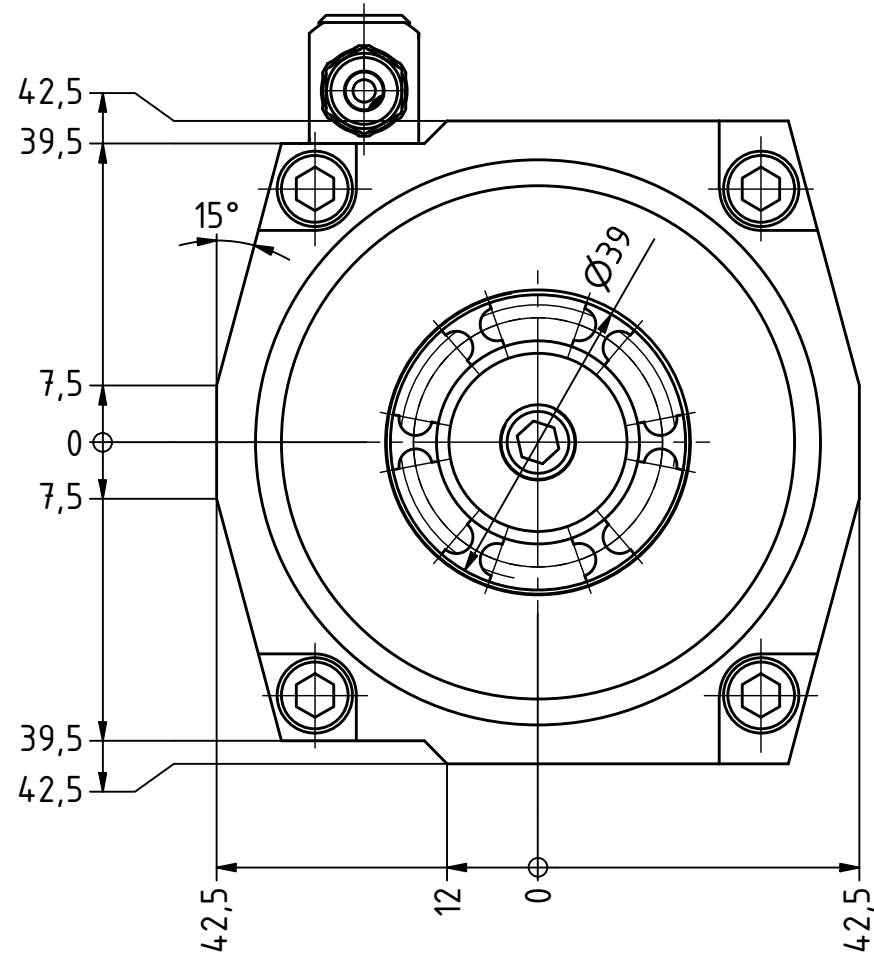
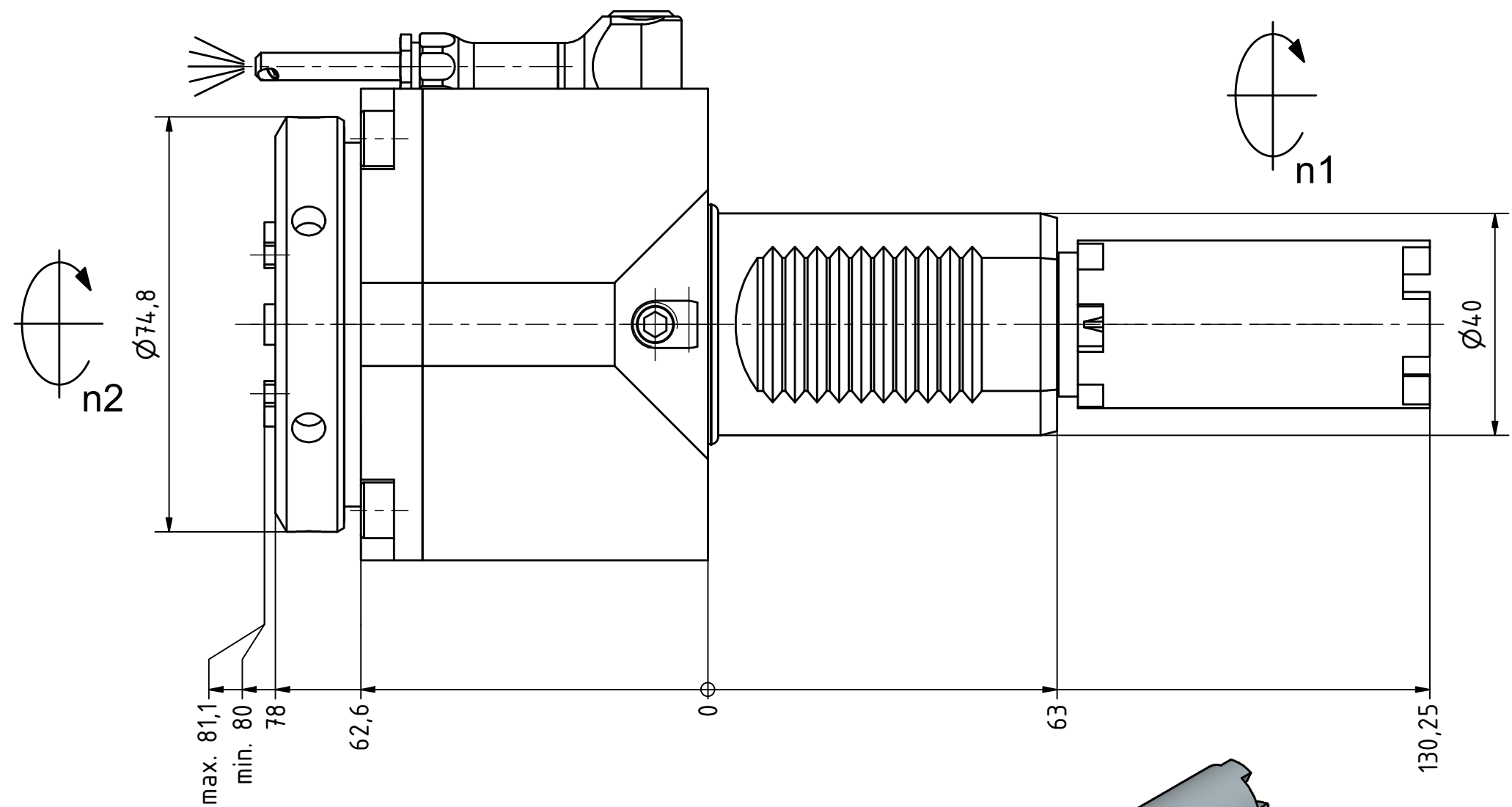
Spannzange / *collet* ER32 DIN6499  
Spannbereich / *clamping range*: 2,0 - 20,0

Gewindebohrzange / *tapping collet*  
ET-1-32 M5-M12

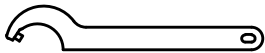
  
Butterfly  
Seal

  
Coolant  
Management

  
Tech  
Details



Spannzangenschlüssel für  
innenliegende Mutter  
*Clamping wrench for  
internal collet*  
232AX



Hakenschlüssel  
mit Zapfen  
*Hook wrench  
with fixed pin*  
DIN1810 B 68x75

Copyright **EWS Tool Technologies**  
Weitergabe und Vervielfältigung dieser Unterlage,  
Verwertung und Mitteilung ihres Inhalts nicht  
gestattet, soweit nicht ausdrücklich zugestanden.  
Zu widerhandlungen verpflichten zu Schadenersatz.

Bemerkung - <i>Note</i>	<b>Technische Daten - <i>technical data</i></b>  <i>Weight</i> = 4.155 [kg] <i>Torque max.</i> (M1/M2) = 63 / 63 [Nm] <i>Speed max.</i> (n1/n2) = 6000 / 6000 [1/min] <i>Gear ratio</i> (i)=n1:n2 = 1:1	<b>Benennung - <i>Title</i></b>  Axial Bohr und Fräskopf <i>Axial drilling and milling head</i>	<b>EWS</b> Tool Technologies <small>EWS Weigle GmbH &amp; Co. KG Maybachstr. 1 D-73066 Uhingen www.ews-tools.de</small>	Technische Änderungen vorbehalten! <i>Subject to technical modifications!</i>  IDENT: DEWS137436	  REV: -/A  MNR.	<b>QR</b>
			Nr. - <i>No.</i>  40.4032HAASSL40HIM#01	224626		