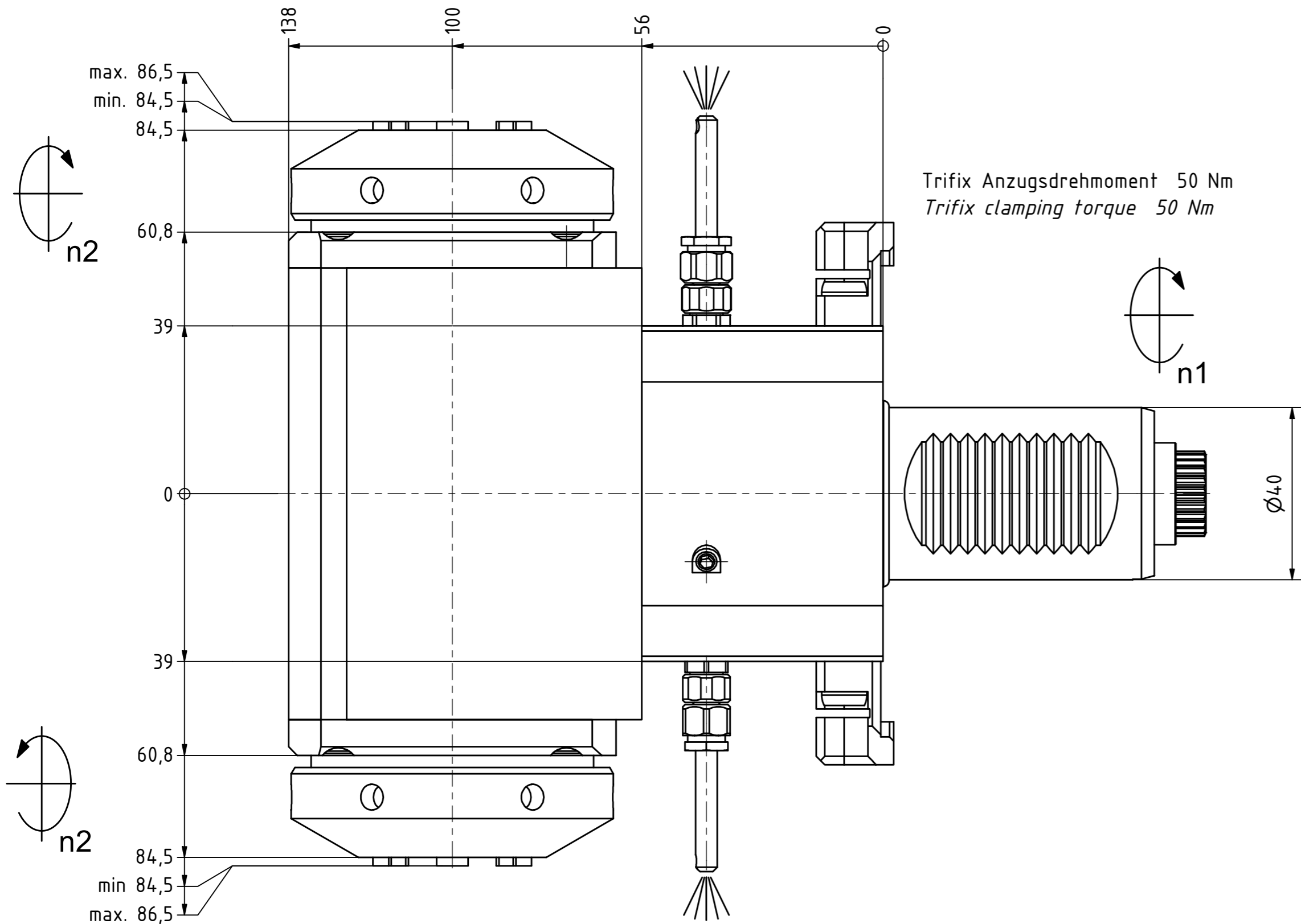
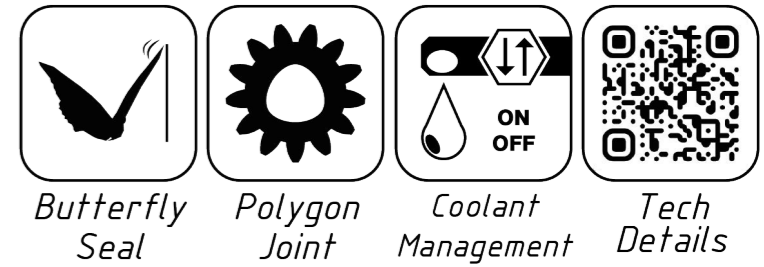
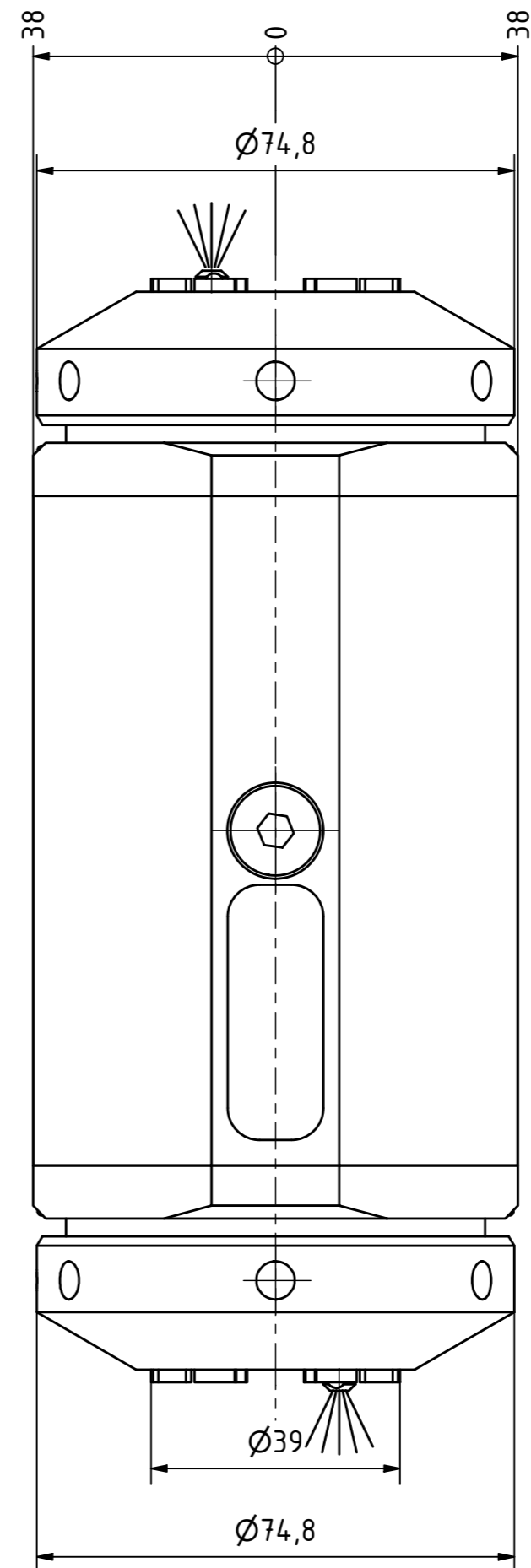


Spannzange / collet ER32 DIN6499
 Spannbereich / clamping range: 2,0 - 20,0

Gewindebohrzange / tapping collet
 ET-1-32 M5-M12

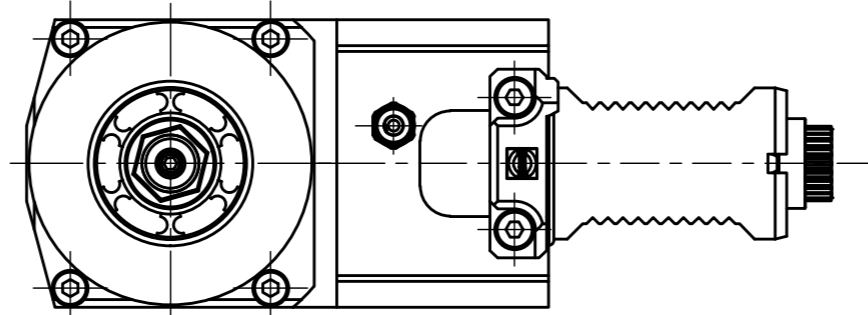


Trifix Anzugsdrehmoment 50 Nm
 Trifix clamping torque 50 Nm

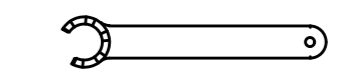
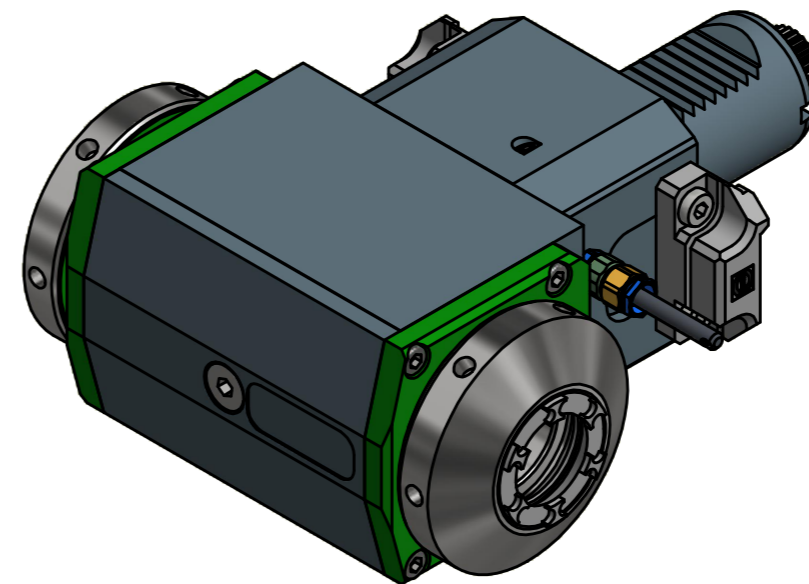


Spannzange / collet ER32 DIN6499
 Spannbereich / clamping range: 2,0 - 20,0

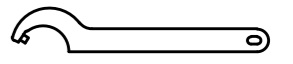
Gewindebohrzange / tapping collet
 ET-1-32 M5-M12



Doppelverzahnung Lizenz Traub
 double tooth system licence Traub



Spannzangenschlüssel für
 innenliegende Mutter
 Clamping wrench for
 internal collet
 232AX



Hakenschlüssel
 mit Zapfen
 Hook wrench
 with fixed pin
 DIN1810 B 68x75

Copyright **EWS Tool Technologies**
 Weitergabe und Vervielfältigung dieser Unterlage,
 Verwertung und Mitteilung ihres Inhalts nicht
 gestattet, soweit nicht ausdrücklich zugestanden.
 Zuwiderhandlungen verpflichten zu Schadenersatz.

Bemerkung - Note	Technische Daten - technical data Weight = 8,455 [kg] Torque max. (M1/M2) = 63 / 63 63 [Nm] Speed max. (n1/n2) = 6000 / 6000 6000 [1/min] Gear ratio (i)=n1:n2 = 1:1 1:1	Benennung - Title Radial Bohr und Fräskopf Radial drilling and milling head	<table border="1"> <tr> <td data-bbox="2226 1917 2463 1984"> EWS <small>EWS Weigle GmbH & Co. KG Maybachstr. 1 D-73066 Uhingen www.ews-tools.de</small> </td> <td data-bbox="2463 1917 2700 1984"> Technische Änderungen vorbehalten! Subject to technical modifications! IDENT: DEWS107463 </td> <td data-bbox="2700 1917 2929 1984"> REV: -/A </td> </tr> <tr> <td data-bbox="2226 1984 2463 2047"> Nr. - No. 60.4032DCTXRLTFIM </td> <td data-bbox="2463 1984 2700 2047"> MNR. 220284 </td> <td data-bbox="2700 1984 2929 2047"> QR </td> </tr> </table>	EWS <small>EWS Weigle GmbH & Co. KG Maybachstr. 1 D-73066 Uhingen www.ews-tools.de</small>	Technische Änderungen vorbehalten! Subject to technical modifications! IDENT: DEWS107463	 REV: -/A	Nr. - No. 60.4032DCTXRLTFIM	MNR. 220284	QR
EWS <small>EWS Weigle GmbH & Co. KG Maybachstr. 1 D-73066 Uhingen www.ews-tools.de</small>	Technische Änderungen vorbehalten! Subject to technical modifications! IDENT: DEWS107463	 REV: -/A							
Nr. - No. 60.4032DCTXRLTFIM	MNR. 220284	QR							