




Spannzange / *collet* ER32 DIN6499
Spannbereich / *clamping range*: 2,0 - 20,0




Ceramic Seal




Butterfly Seal



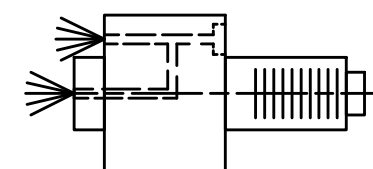
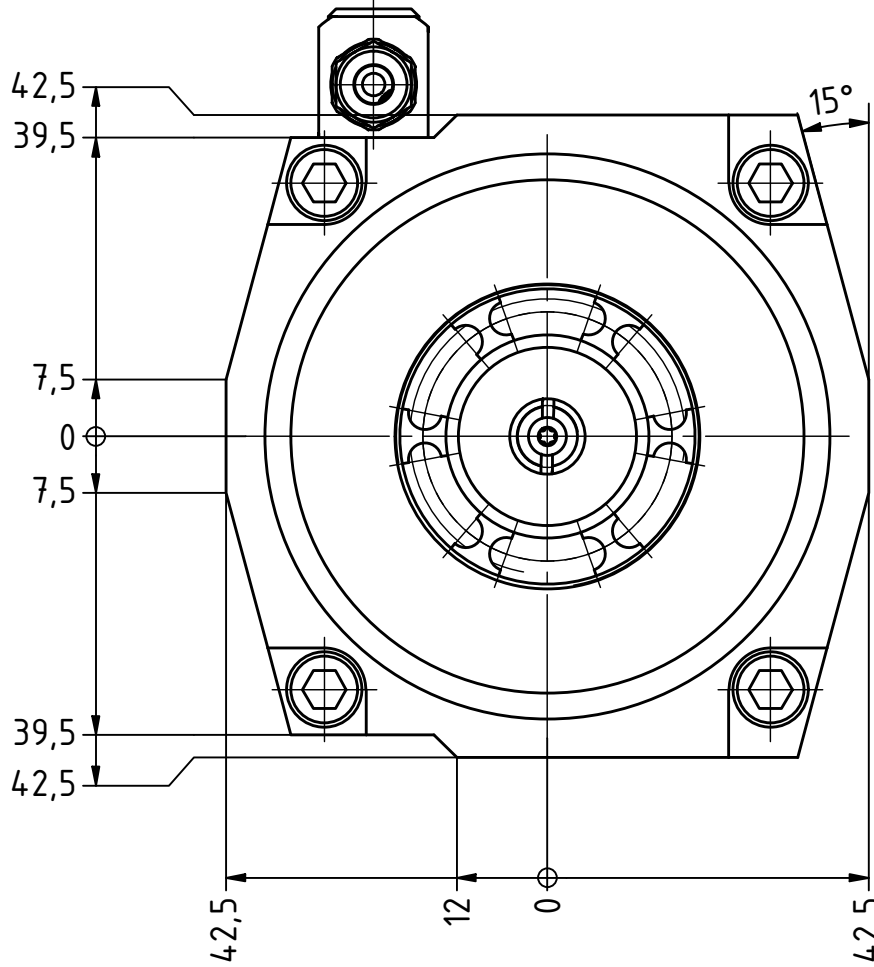
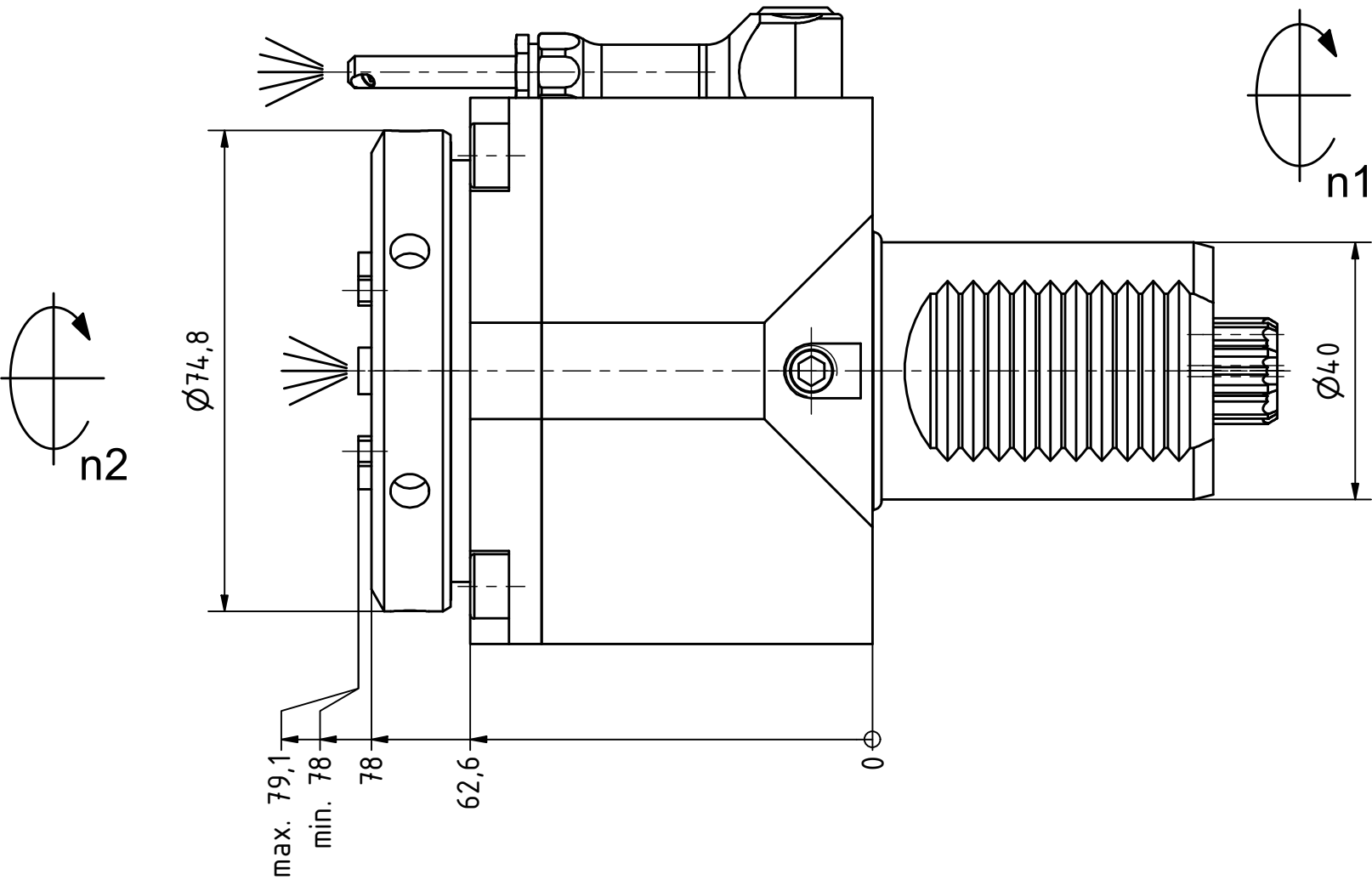
Highspeed
1/min



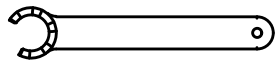
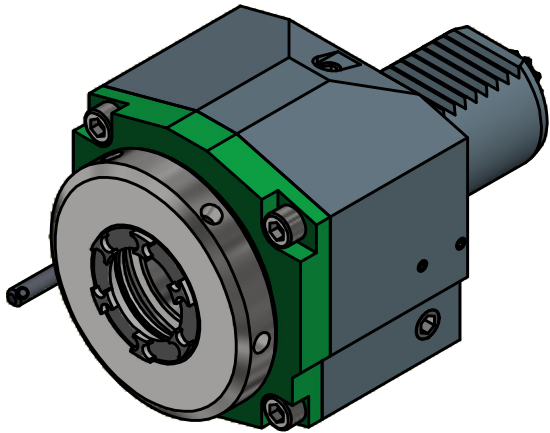
Coolant Management
ON OFF



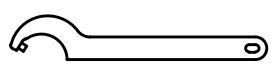
Tech Details



Innen- und Aussenkuehlung / *Inside and outside coolant supply*
Kuehlmittelfiltrierung<50µ / *coolant filtration<50µ*



Spannzangenschlüssel für
innenliegende Mutter
*Clamping wrench for
internal collet*
232AX



Hakenschlüssel
mit Zapfen
*Hook wrench
with fixed pin*
DIN1810 B 68x75

Copyright **EWS Tool Technologies**
Weitergabe und Vervielfaeltigung dieser Unterlage,
Verwertung und Mitteilung ihres Inhalts nicht
gestattet, soweit nicht ausdrucklich zugestanden.
Zu widerhandlungen verpflichten zu Schadenersatz.

<p>Bemerkung - <i>Note</i></p> <p>Für Trockenlauf geeignet! <i>Use without coolant fluid allowed!</i></p>	<p>Technische Daten - <i>technical data</i></p> <p>Weight = 3.534 [kg] Torque max. (M1/M2) = 50 / 50 [Nm] Speed max. (n1/n2) = 12000 / 12000 [1/min] Gear ratio (i)=n1:n2 = 1:1 Pressure (pmax) = 70 [bar]</p>	<p>Benennung - <i>Title</i></p> <p>Axial Bohr und Fräskopf <i>Axial drilling and milling head</i></p>	<p>EWS Tool Technologies</p> <p><small>EWS Weigle GmbH & Co. KG Maybachstr. 1 D-73066 Uhlingen www.ews-tools.de</small></p>	<p>Technische Aenderungen vorbehalten! <i>Subject to technical modifications!</i></p> <p>IDENT: DEWS127989</p> <p>Nr. - <i>No.</i> 40.40325482IKCIMHSD12</p>	<p>REV: -/B</p> <p>MNR. 218132</p>	<p>QR</p>
---	--	---	--	---	---	------------------