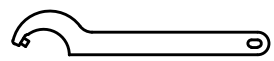
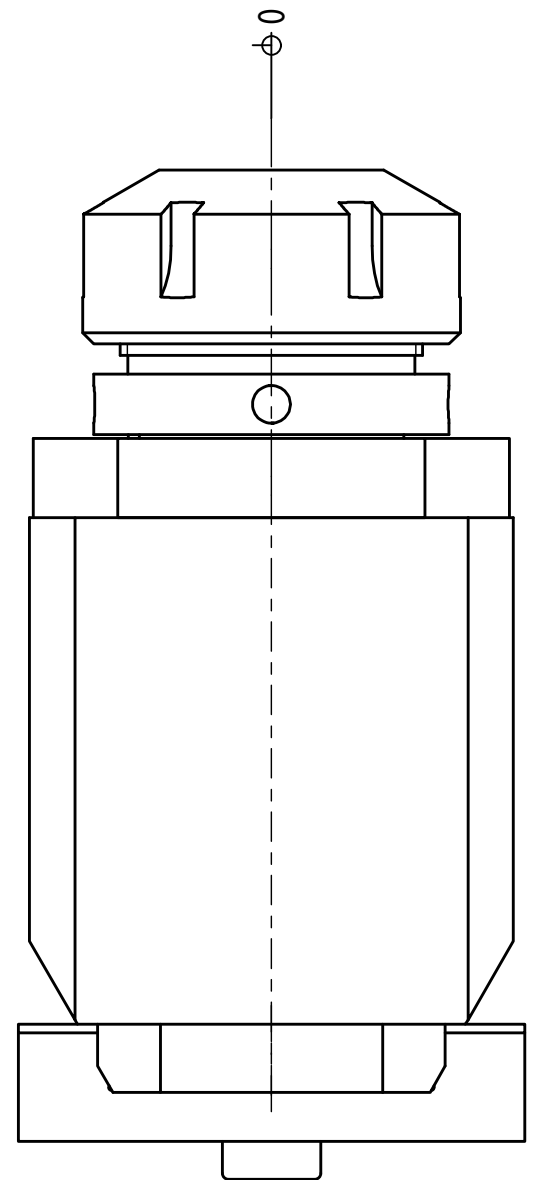
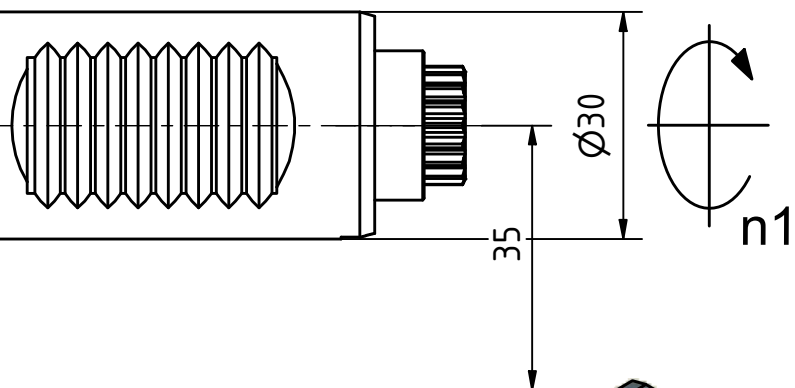
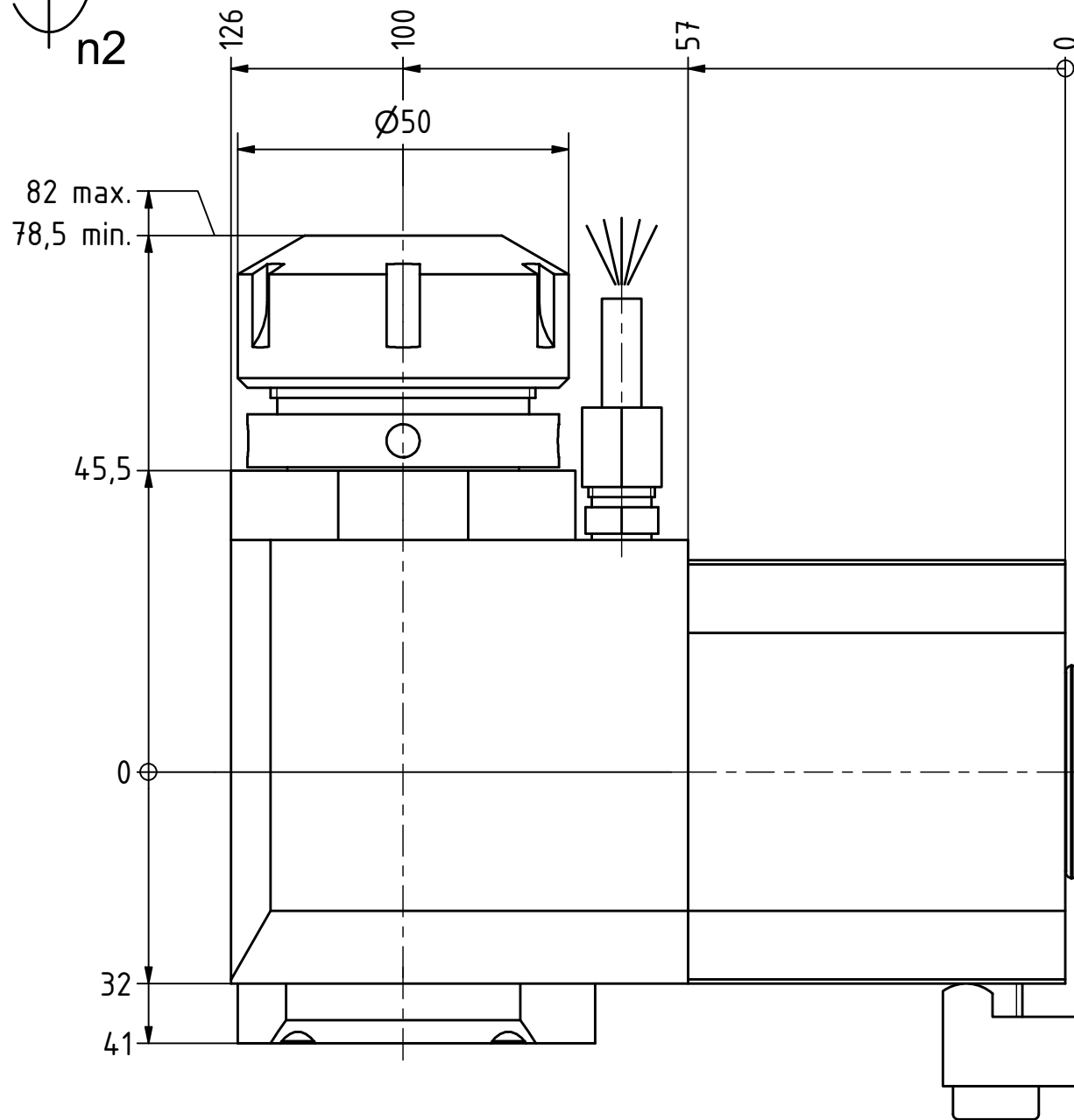
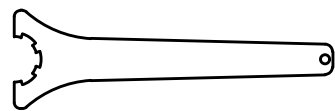


Spannzange / *collet* ER32 DIN6499
 Spannbereich / *clamping range*: 2,0 - 20,0

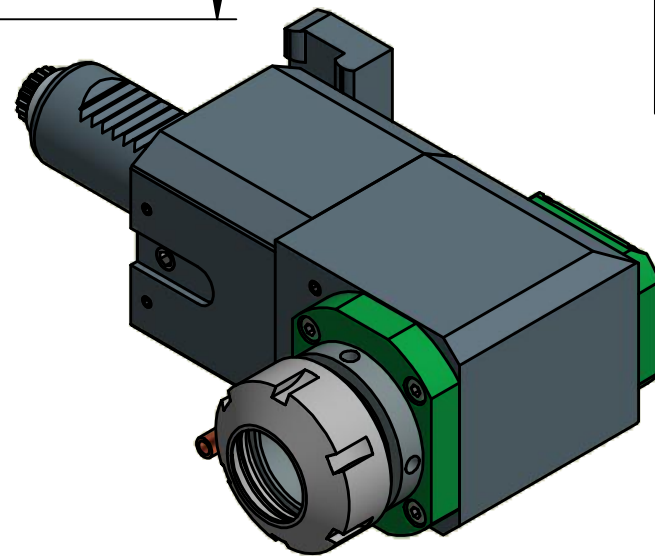
Gewindebohrzange / *tapping collet*
 ET-1-32 M5-M12



Hakenschlüssel
 mit Zapfen
*Hook wrench
 with fixed pin*
 DIN1810 B 45x50



Spannzangenschlüssel
Clamping wrench
 232



Copyright **EWS Tool Technologies**
 Weitergabe und Vervielfaeltigung dieser Unterlage,
 Verwertung und Mitteilung ihres Inhalts nicht
 gestattet, soweit nicht ausdruercklich zugestanden.
 Zuwiderhandlungen verpflichten zu Schadenersatz.

Bemerkung - <i>Note</i>

Technische Daten - <i>technical data</i>
Weight = 4.358 [kg]
Torque max. (M1/M2) = 20 / 40 [Nm]
Speed max. (n1/n2) = 6000 / 3000 [1/min]
Gear ratio (i)=n1:n2 = 2:1

Benennung - <i>Title</i>
Radial Bohr und Fräskopf <i>Radial drilling and milling head</i>

EWS <small>Tool Technologies</small>	<small>EWS Weigele GmbH & Co. KG Maybachstr. 1 D-73066 UHINGEN www.ews-tools.de</small>
Nr. - <i>No.</i>	60.3032E365LI20T13

Technische Aenderungen vorbehalten! <i>Subject to technical modifications!</i>
IDENT: DEWS093809
MNR.
217634

REV: -/A

