

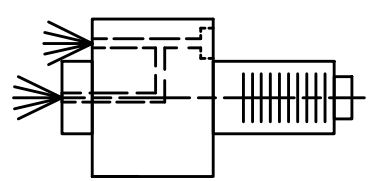
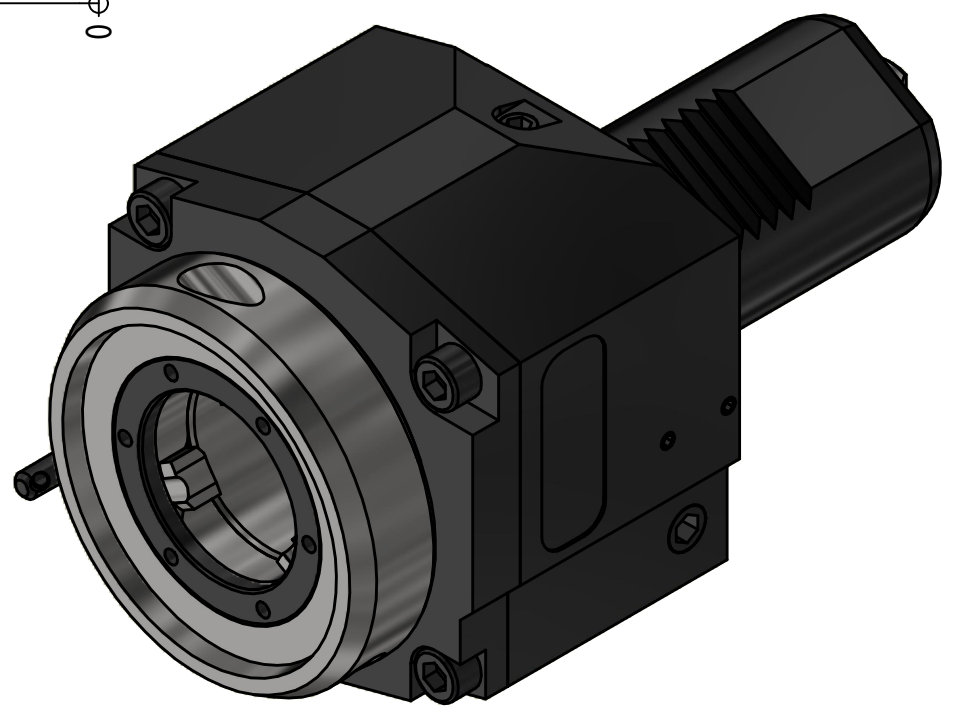
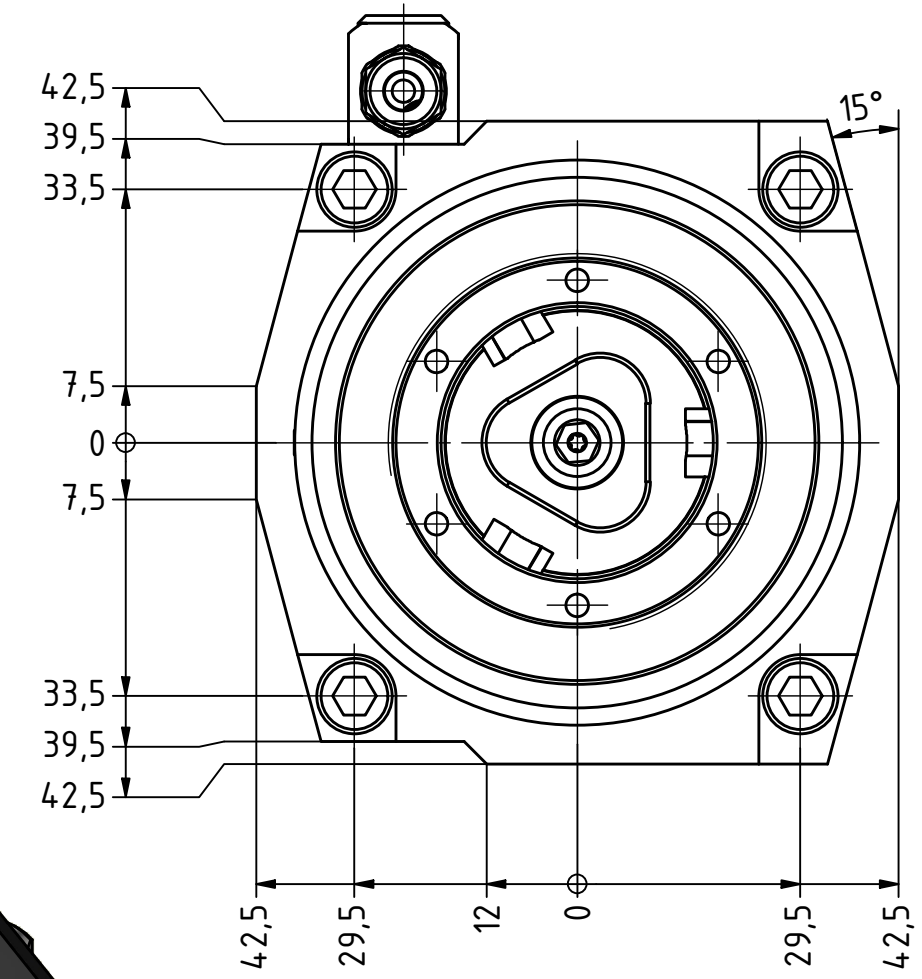
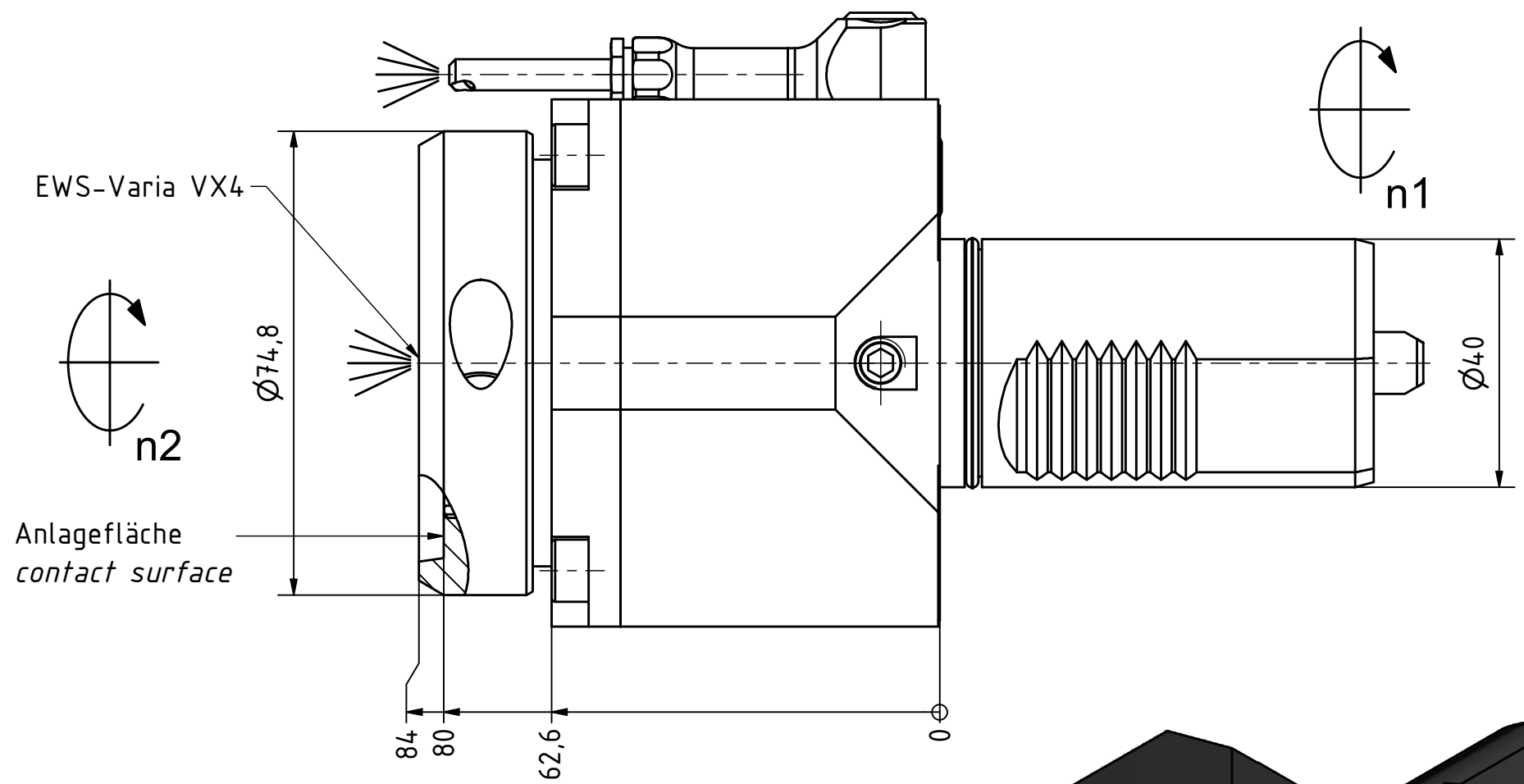
EWS.Varia

Ceramic Seal

Butterfly Seal

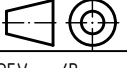
Coolant Management

Tech Details



Innen- und Aussenkuehlung / Inside and outside coolant supply
 Kuehlmittelfiltrierung<50µ / coolant filtration<50µ

Copyright **EWS Tool Technologies**
 Weitergabe und Vervielfaeltigung dieser Unterlage,
 Verwertung und Mitteilung ihres Inhalts nicht
 gestattet, soweit nicht ausdrucklich zugestanden.
 Zuwiderhandlungen verpflichten zu Schadenersatz.

Bemerkung - Note Für Trockenlauf geeignet! Use without coolant fluid allowed!	Technische Daten - technical data Weight = 3.727 [kg] Torque max. (M1/M2) = 63 / 63 [Nm] Speed max. (n1/n2) = 6000 / 6000 [1/min] Gear ratio (i)=n1:n2 = 1:1 Pressure (pmax) = 70 [bar]	Benennung - Title Axial Bohr und Fräskopf Axial drilling and milling head	<div> <div> EWS Tool Technologies </div> <div> EWS Weigele GmbH & Co. KG Maybachstr. 1 D-73066 Uhingen www.ews-tools.de </div> </div> <div> Nr. - No. 40.40VX4SQT15IKC </div>	Technische Aenderungen vorbehalten! Subject to technical modifications! IDENT: DEWS133745 MNR. 223835	<div>  <div> QR </div> </div>
---	--	---	--	--	---