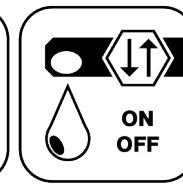
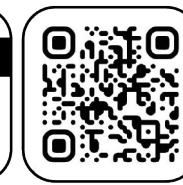




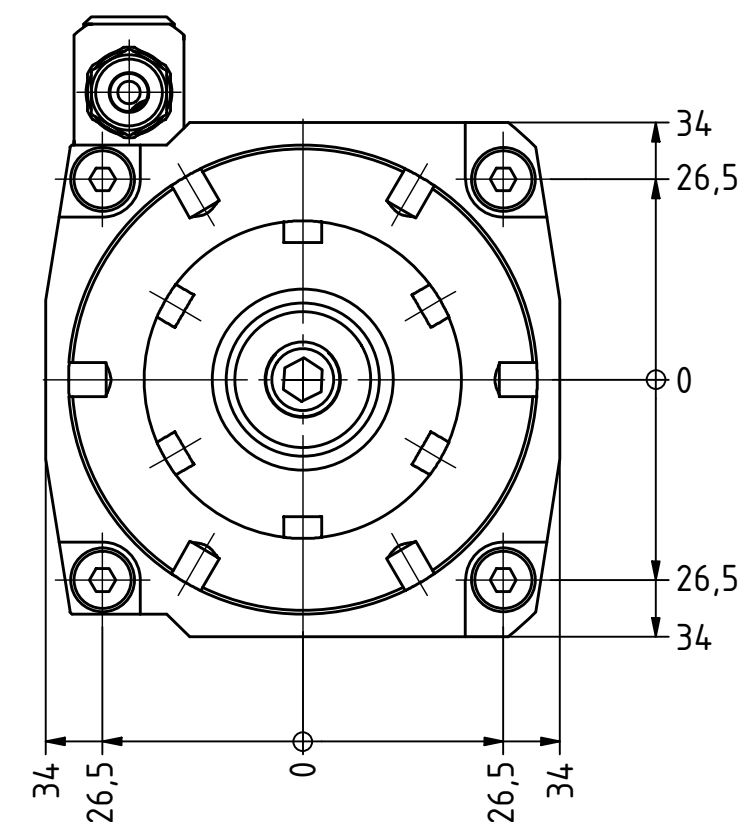
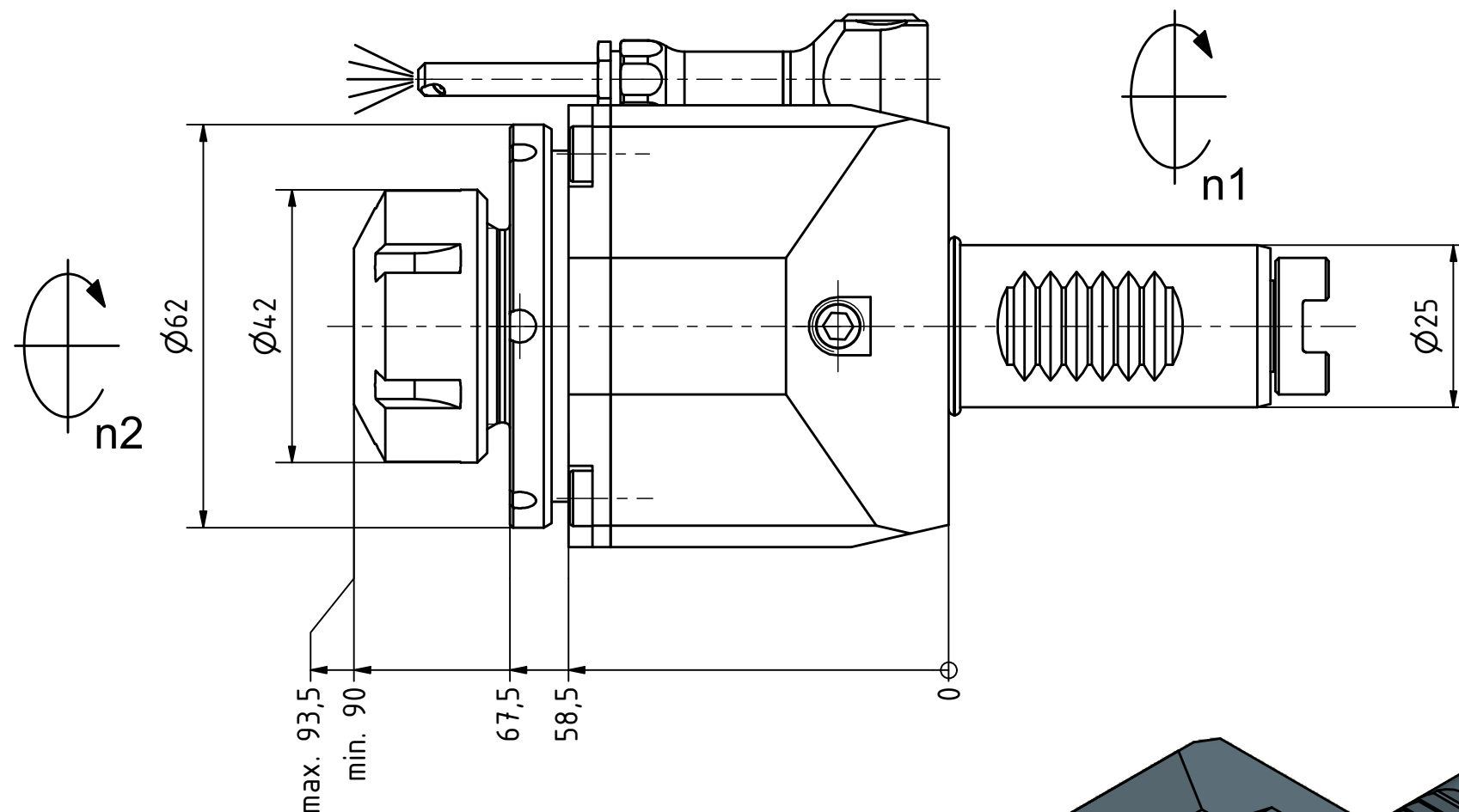
Butterfly
Seal



Coolant
Management

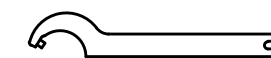
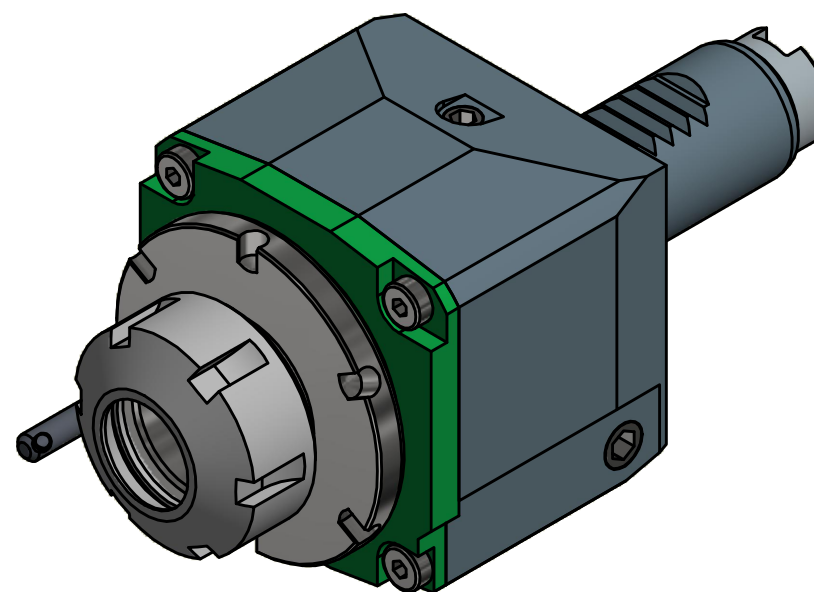


Tech
Details

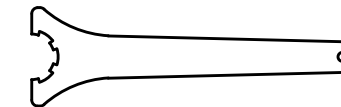


Spannzange / *collet* ER25 DIN6499
Spannbereich / *clamping range*: 1,0 - 16,0

Gewindebohrzange / *tapping collet*
ET-1-25 M3-M12



Hakenschlüssel
mit Zapfen
*Hook wrench
with fixed pin*
DIN1810 B 58x62



Spannzangenschlüssel
Clamping wrench
225

Copyright **EWS Tool Technologies**
Weitergabe und Vervielfältigung dieser Unterlage,
Verwertung und Mitteilung ihres Inhalts nicht
gestattet, soweit nicht ausdrücklich zugestanden.
Zuwiderhandlungen verpflichten zu Schadenersatz.

Bemerkung - *Note*

Technische Daten - *technical data*

Weight = 2.157 [kg]
Torque max. (M1/M2) = 25 / 25 [Nm]
Speed max. (n1/n2) = 8000 / 8000 [1/min]
Gear ratio (i)=n1:n2 = 1:1

Benennung - *Title*

Axial Bohr und Fräskopf
Axial drilling and milling head

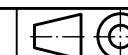
EWS EWS Weigle GmbH & Co. KG
Maybachstr. 1
D-73066 Uhingen
www.ews-tools.de

Technische Änderungen vorbehalten!
Subject to technical modifications!

IDENT: DEWS129767

Nr. - *No.*

40.2525G200#01



REV: -/A

MNR.

222987

QR