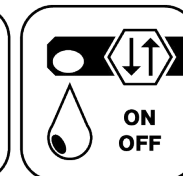




Ceramic  
Seal



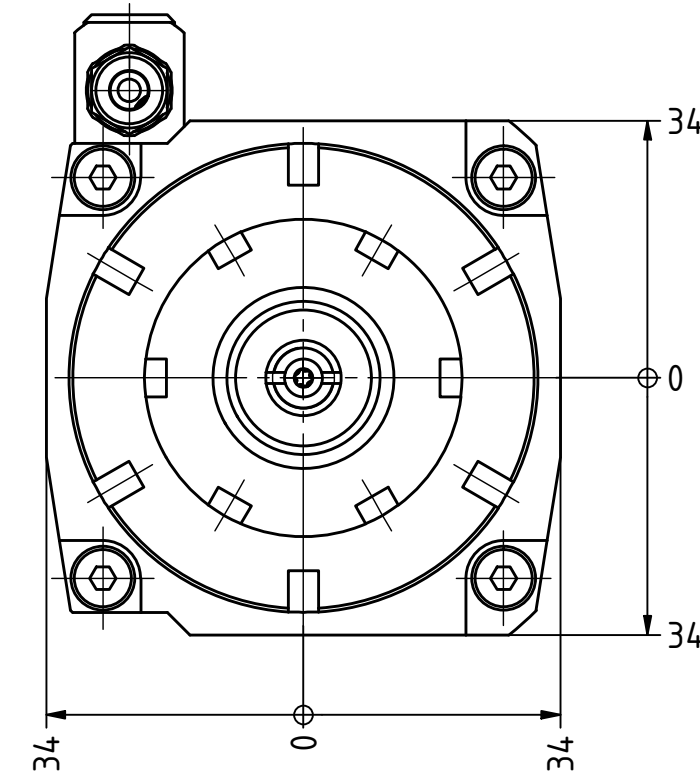
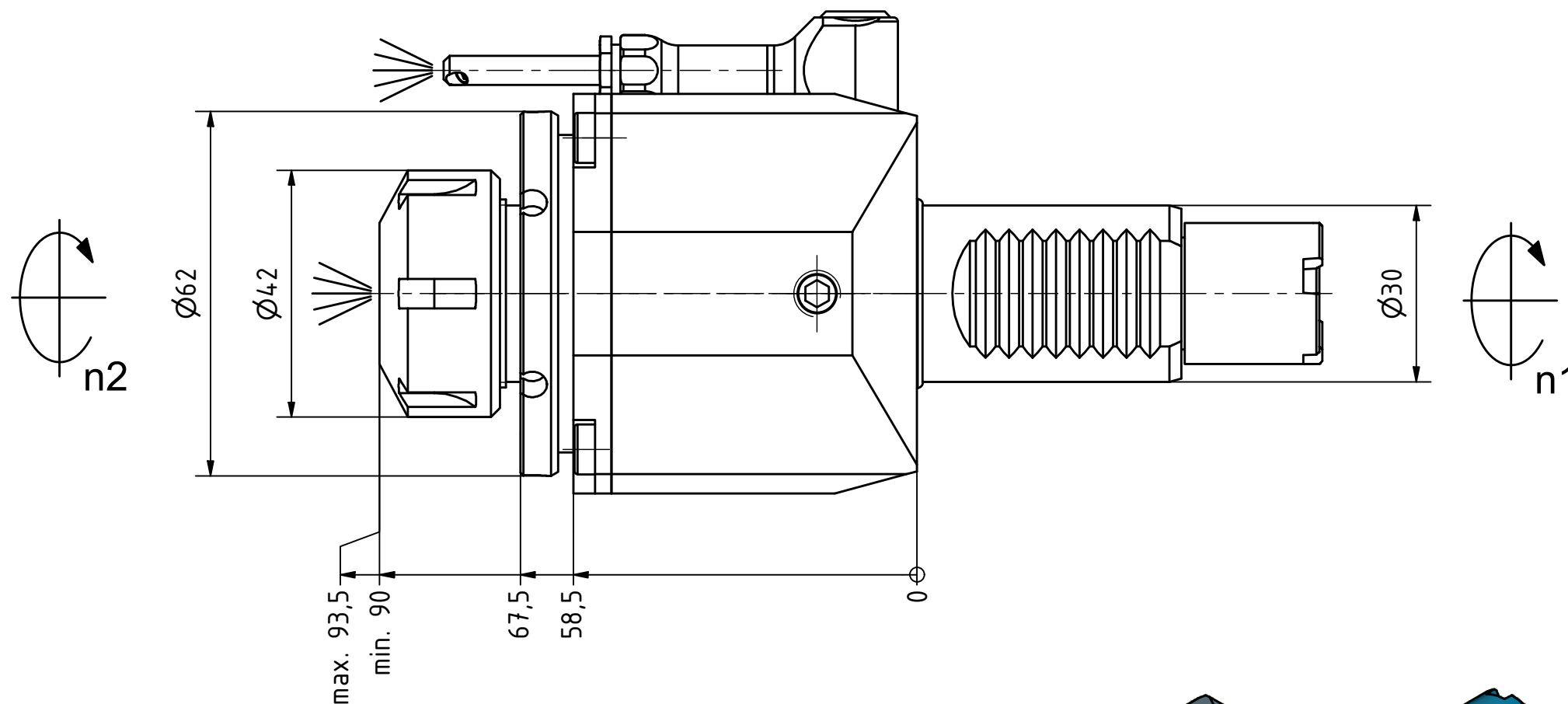
Butterfly  
Seal



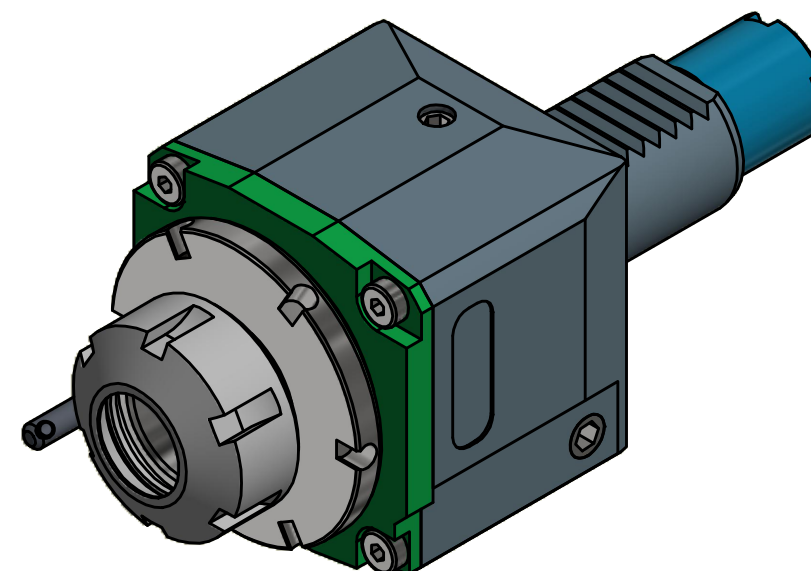
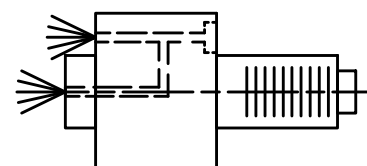
Coolant  
Management



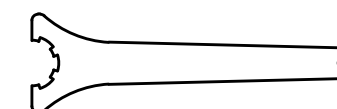
Tech  
Details



Spannzange / *collet* ER25 DIN6499  
Spannbereich / *clamping range*: 1,0 - 16,0



Hakenschlüssel  
mit Zapfen  
*Hook wrench  
with fixed pin*  
DIN1810 B 58x62



Spannzangenschlüssel  
*Clamping wrench*  
225

Innen- und Aussenkuehlung / *Inside and outside coolant supply*  
Kuehlmittelfiltrierung<50µ / *coolant filtration<50µ*

Bemerkung - *Note*

Für Trockenlauf geeignet!  
*Use without coolant fluid allowed!*

Technische Daten - *technical data*

*Weight* = 2.420 [kg]  
*Torque max.* (M1/M2) = 32 / 32 [Nm]  
*Speed max.* (n1/n2) = 8000 / 8000 [1/min]  
*Gear ratio* (i)=n1:n2 = 1:1  
*Pressure* (pmax) = 70 [bar]

Benennung - *Title*

**Axial Bohr und Fräskopf**  
***Axial drilling and milling head***

**EWS**  
Tool Technologies

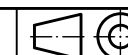
EWS Weigle GmbH & Co. KG  
Maybachstr. 1  
D-73066 UHINGEN  
www.ews-tools.de

Technische Änderungen vorbehalten!  
*Subject to technical modifications!*

IDENT: DEWS147936

Nr. - *No.*

40.3025LB10IKC



REV: -/B

MNR.

222779

**QR**

Copyright **EWS Tool Technologies**

Weitergabe und Vervielfaeltigung dieser Unterlage,  
Verwertung und Mitteilung ihres Inhalts nicht  
gestattet, soweit nicht ausdrucklich zugestanden.  
Zuwiderhandlungen verpflichten zu Schadenersatz.