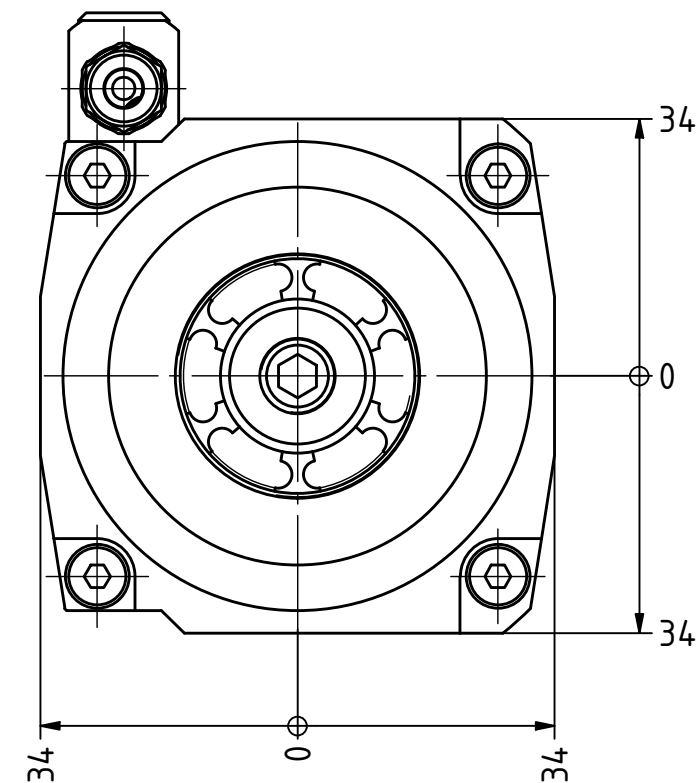
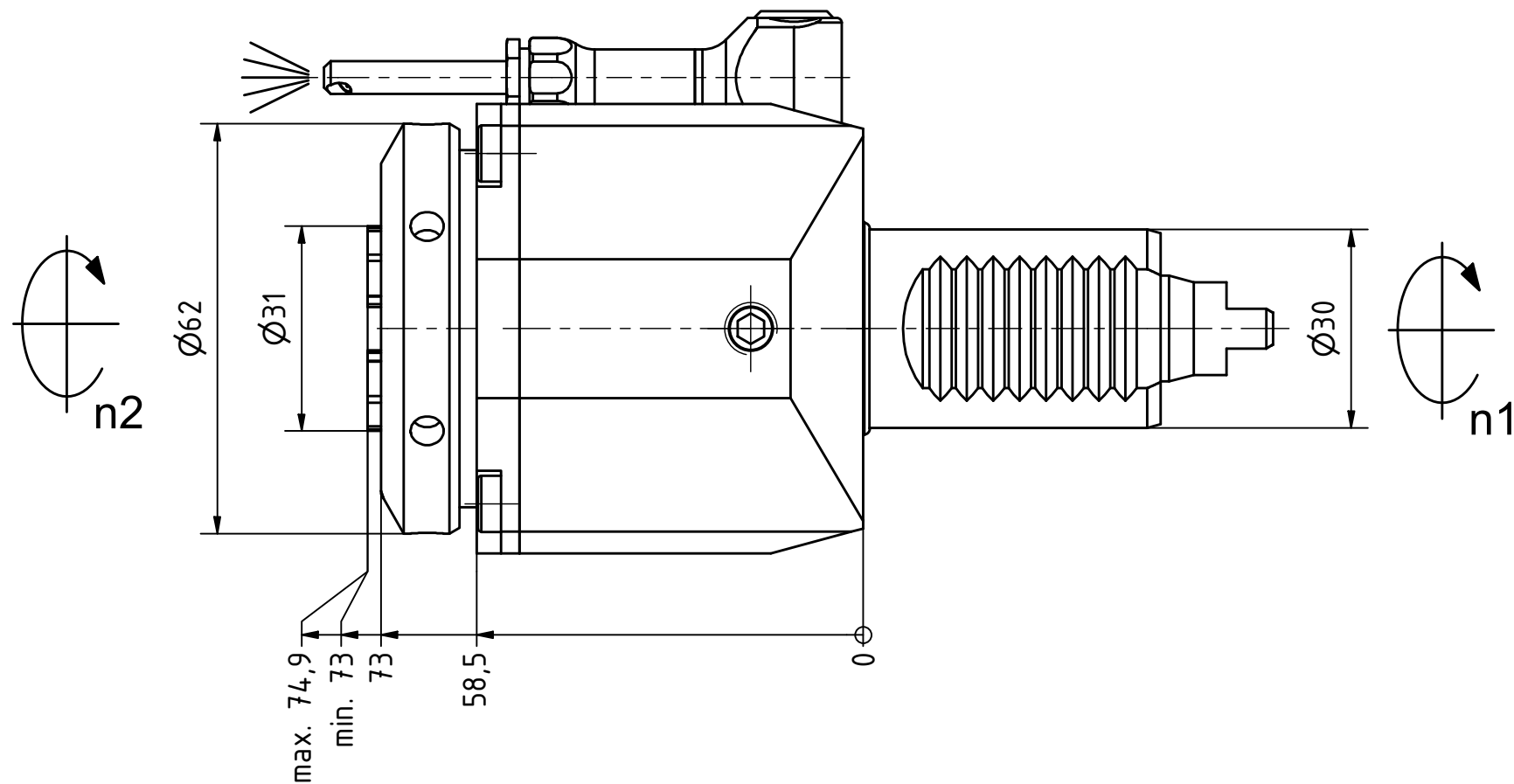
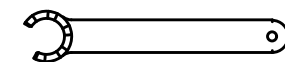
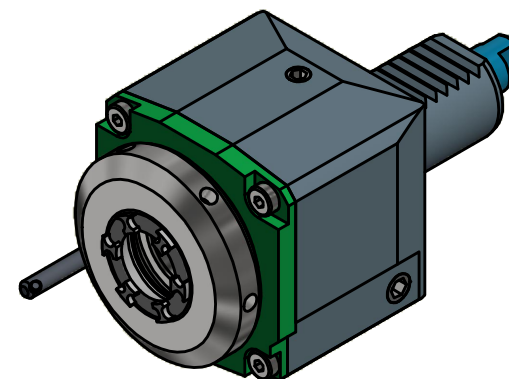


*Butterfly Seal*
*Coolant Management*
*Tech Details*

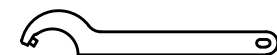


Spannzange / *collet* ER25 DIN6499  
 Spannbereich / *clamping range*: 1,0 - 16,0

Gewindebohrzange / *tapping collet*  
 ET-1-25 M3-M12





Spannzangenschlüssel für  
 innenliegende Mutter  
*Clamping wrench for  
 internal collet*  
 225AX



Hakenschlüssel  
 mit Zapfen  
*Hook wrench  
 with fixed pin*  
 DIN1810 B 58x62

Copyright **EWS Tool Technologies**  
 Weitergabe und Vervielfältigung dieser Unterlage,  
 Verwertung und Mitteilung ihres Inhalts nicht  
 gestattet, soweit nicht ausdrücklich zugestanden.  
 Zuwiderhandlungen verpflichten zu Schadenersatz.

Bemerkung - <i>Note</i>	Technische Daten - <i>technical data</i> <i>Weight</i> = 2.139 [kg] <i>Torque max.</i> (M1/M2) = 32 / 32 [Nm] <i>Speed max.</i> (n1/n2) = 8000 / 8000 [1/min] <i>Gear ratio</i> (i)=n1:n2 = 1:1	Benennung - <i>Title</i> <b>Axial Bohr und Fräskopf</b> <i>Axial drilling and milling head</i>	<div>  <div>           EWS Weigle GmbH &amp; Co. KG            Maybachstr. 1            D-73066 Uhlingen            www.ews-tools.de         </div> </div> <div>           Nr. - <i>No.</i>  <b>40.30251809IM#01</b> </div>	<div>           Technische Änderungen vorbehalten!  <i>Subject to technical modifications!</i> </div> <div>           IDENT: DEWS129399         </div> <div>           REV: -/A         </div>	<div>  </div> <div> <b>QR</b> </div>
-------------------------	---	--	--	--	---