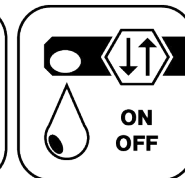




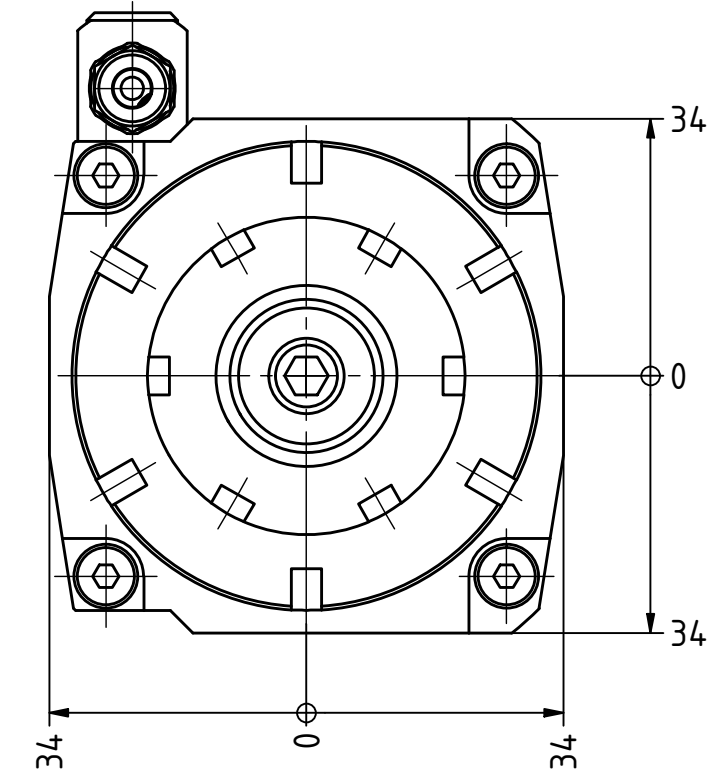
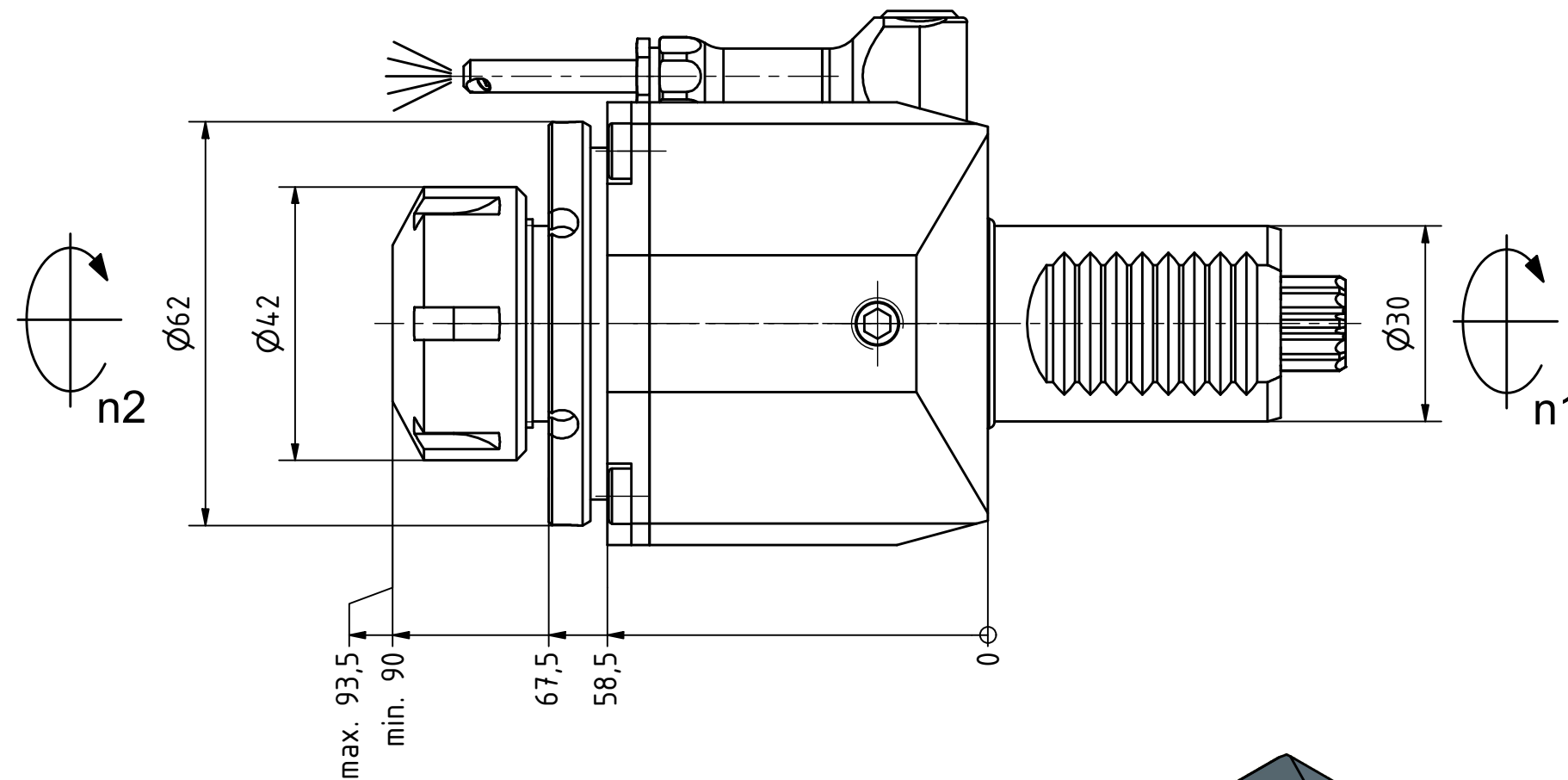
Butterfly  
Seal



Coolant  
Management

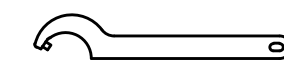
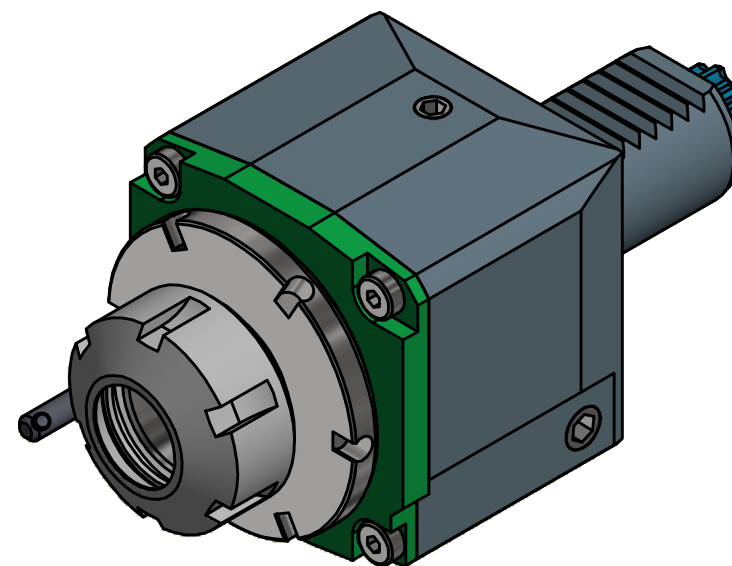


Tech  
Details

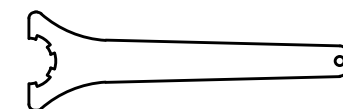


Spannzange / *collet* ER25 DIN6499  
Spannbereich / *clamping range*: 1,0 - 16,0

Gewindebohrzange / *tapping collet*  
ET-1-25 M3-M12



Hakenschlüssel  
mit Zapfen  
*Hook wrench  
with fixed pin*  
DIN1810 B 58x62



Spannzangenschlüssel  
*Clamping wrench*  
225

Copyright **EWS Tool Technologies**  
Weitergabe und Vervielfältigung dieser Unterlage,  
Verwertung und Mitteilung ihres Inhalts nicht  
gestattet, soweit nicht ausdrücklich zugestanden.  
Zuwiderhandlungen verpflichten zu Schadenersatz.

Bemerkung - *Note*

Technische Daten - *technical data*

*Weight* = 2.234 [kg]  
*Torque max.* (M1/M2) = 32 / 32 [Nm]  
*Speed max.* (n1/n2) = 8000 / 8000 [1/min]  
*Gear ratio* (i)=n1:n2 = 1:1

Benennung - *Title*

**Axial Bohr und Fräskopf**  
***Axial drilling and milling head***

**EWS**  
Tool Technologies

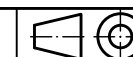
EWS Weigle GmbH & Co. KG  
Maybachstr. 1  
D-73066 Uhingen  
www.ews-tools.de

Technische Änderungen vorbehalten!  
*Subject to technical modifications!*

IDENT: DEWS129435

Nr. - *No.*

40.30255482#01



REV: -/A

MNR.

222771

**QR**