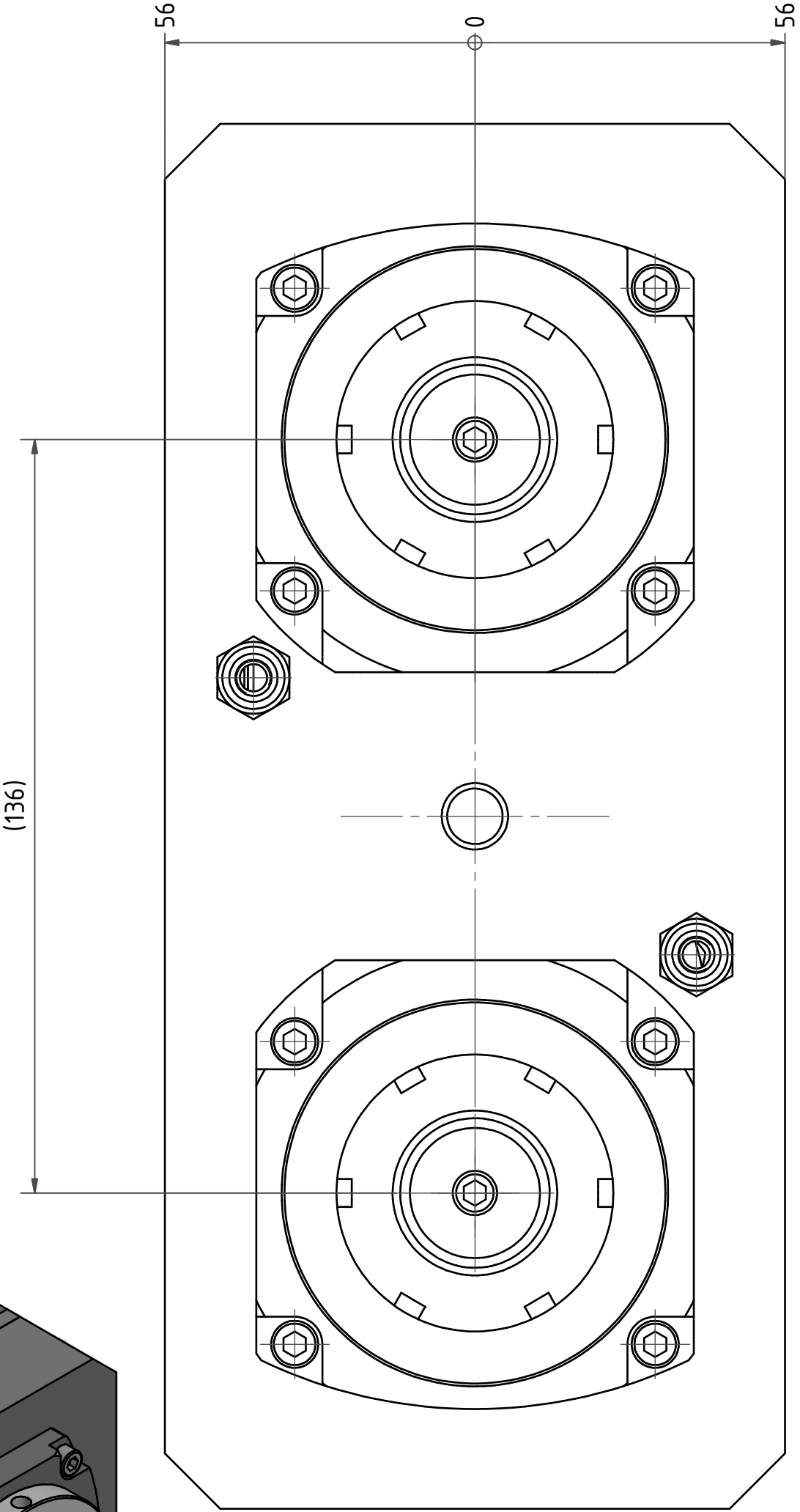
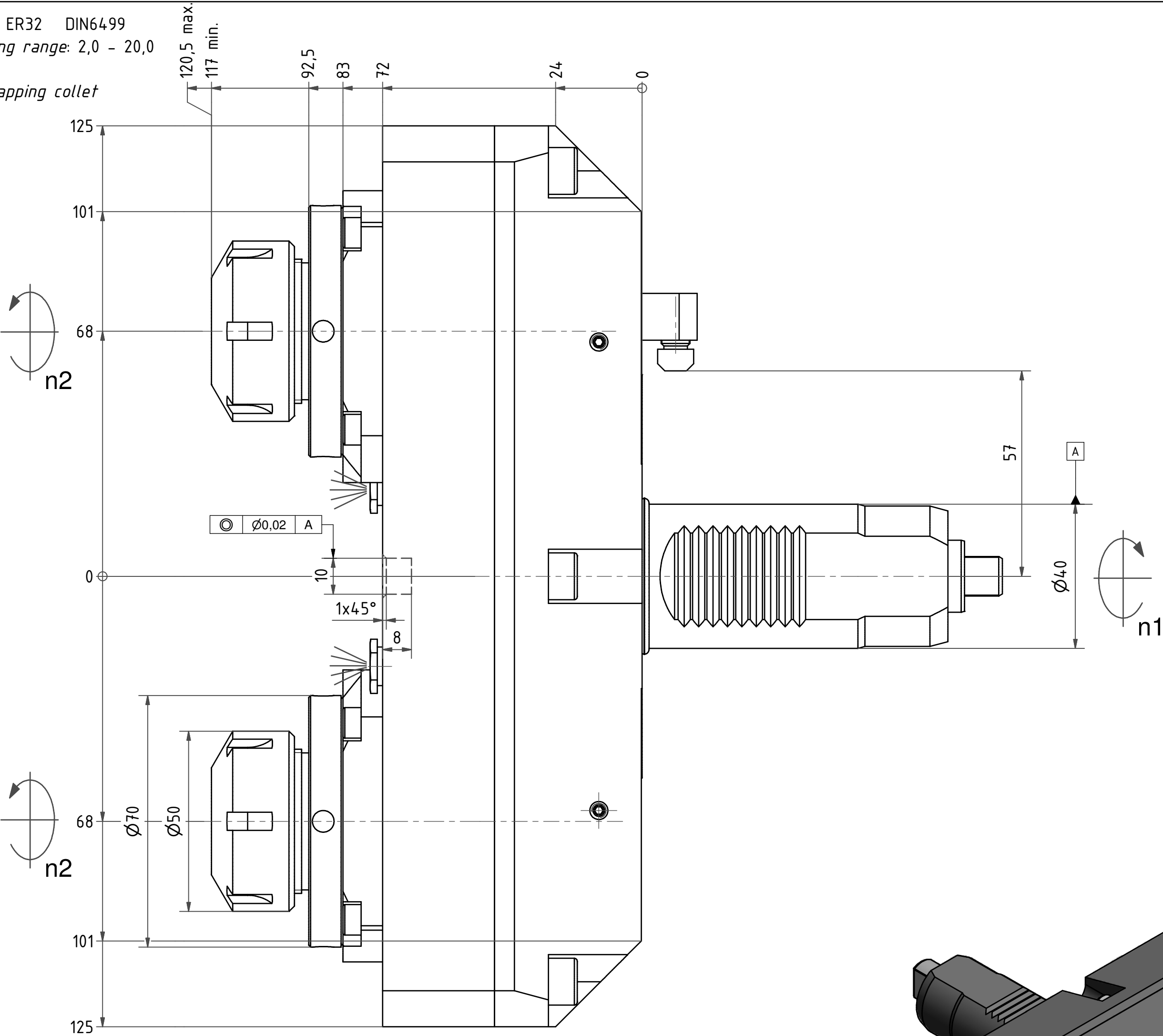


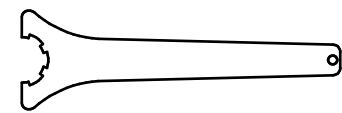
Spannzange / *collet* ER32 DIN6499  
Spannbereich / *clamping range*: 2,0 - 20,0

Gewindebohrzange / *tapping collet*  
ET-1-32 M5-M12

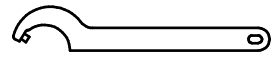


Spannzange / *collet* ER32 DIN6499  
Spannbereich / *clamping range*: 2,0 - 20,0

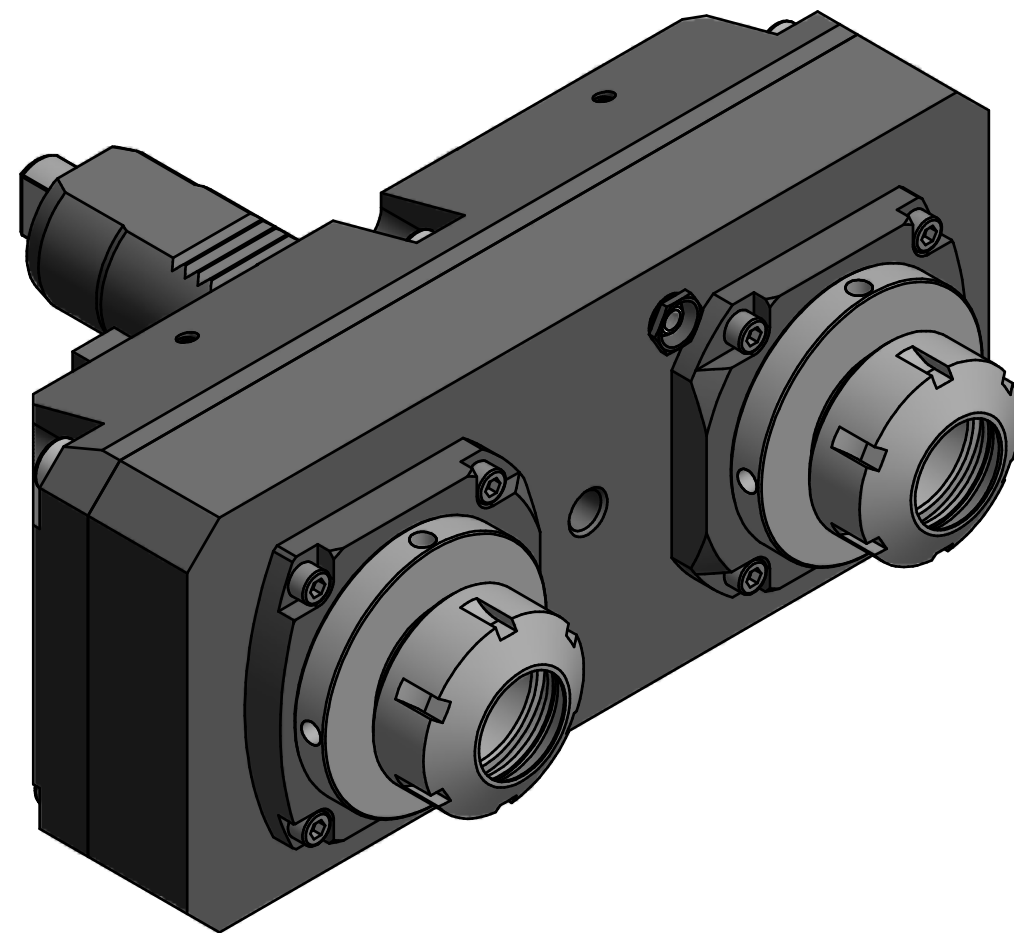
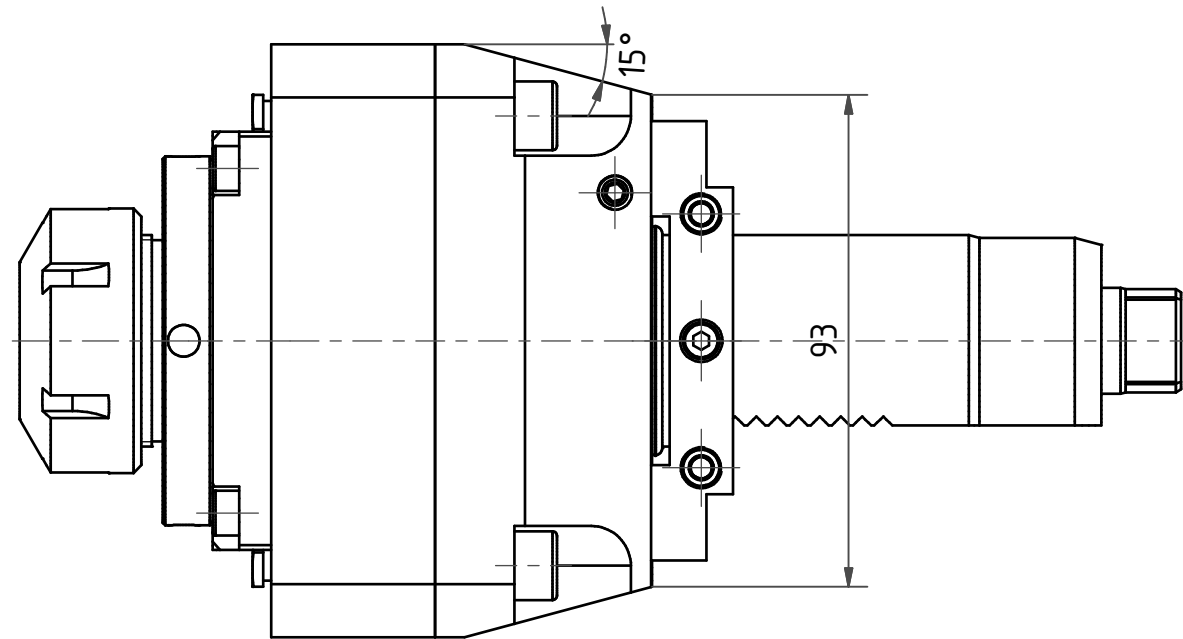
Gewindebohrzange / *tapping collet*  
ET-1-32 M5-M12







Spannzangenschlüssel  
*Clamping wrench*  
232



Hakenschlüssel  
mit Zapfen  
*Hook wrench  
with fixed pin*  
DIN1810 B 68x75



Bemerkung - <i>Note</i>	Technische Daten - <i>technical data</i> <i>Weight</i> = 15.944 [kg] <i>Torque max.</i> (M1/M2) = 50 / 75 each Sp. [Nm] <i>Speed max.</i> (n1/n2) = 6000 / 2180 [1/min] <i>Gear ratio</i> (i)=n1:n2 = 2,75:1	Benennung - <i>Title</i> <b>Axial Bohr und Fräskopf</b> <i>Axial drilling and milling head</i>	<div><div><div><b>EWS</b> <i>Tool Technologies</i></div></div><div><div>EWS Weigelt GmbH &amp; Co. KG Maybachstr. 1 D-73066 Ulm www.ews-tools.de</div><div>Technische Änderungen vorbehalten! <i>Subject to technical modifications!</i></div></div></div>		<div></div> <div>REV: -/-</div>	
			<div>Nr. - <i>No.</i> <b>40.4032DXVL3I3TK136</b></div>	<div>MNR. <b>195228</b></div>		