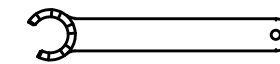
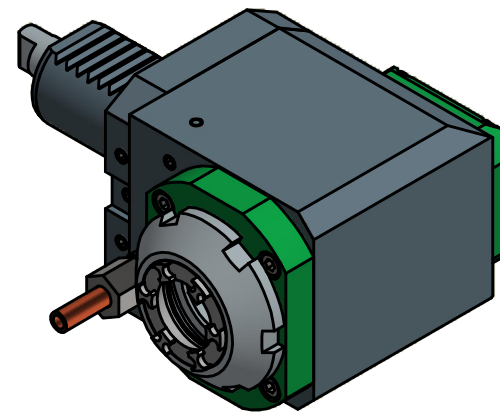
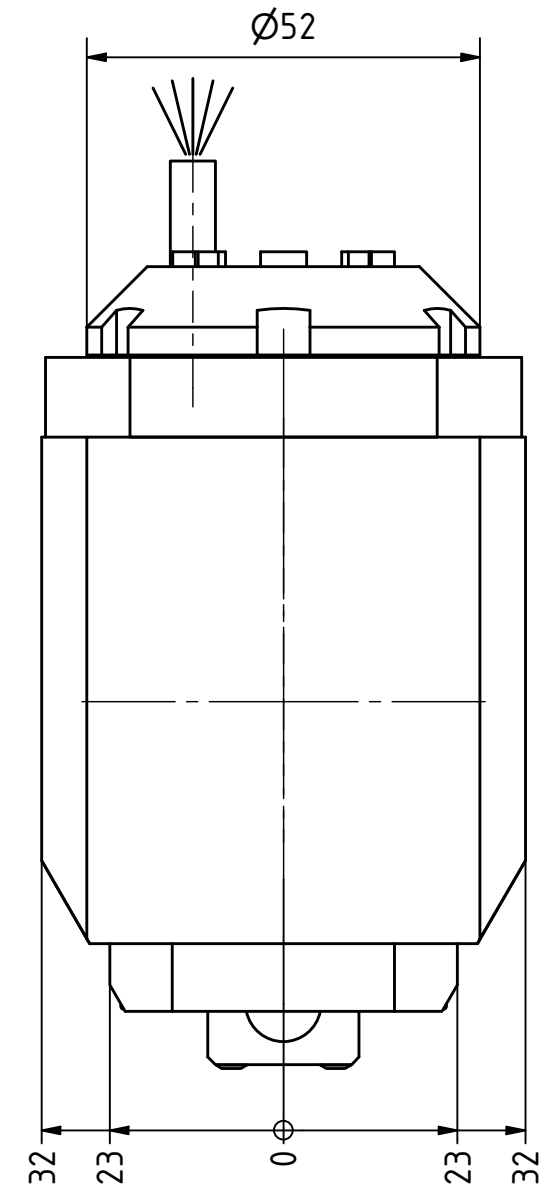
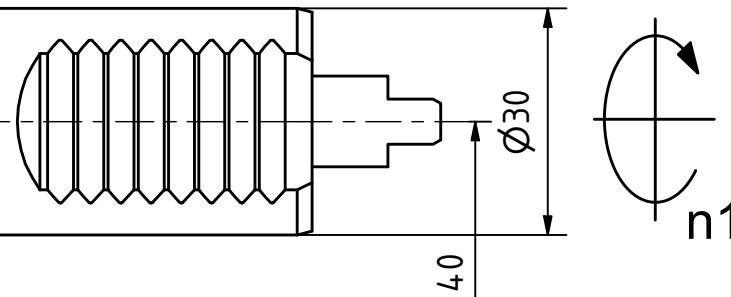
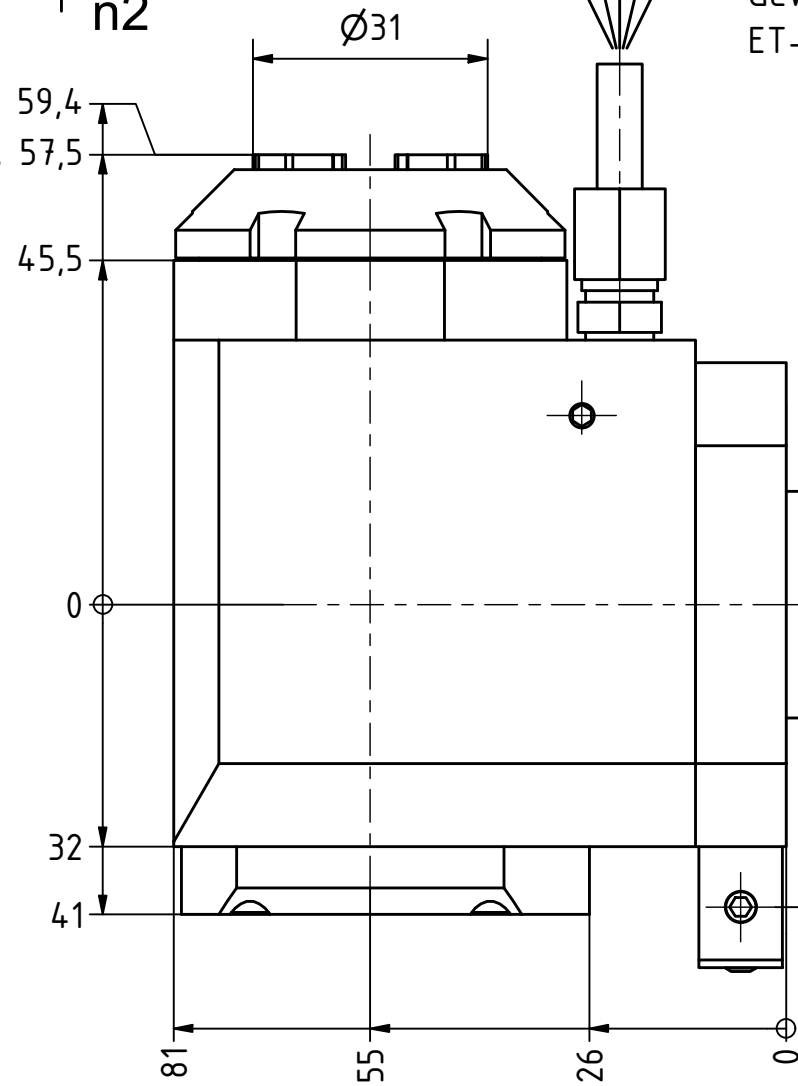


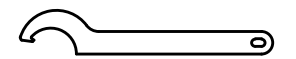
Spannzange / *collet* ER25 DIN6499
 Spannbereich / *clamping range*: 1,0 - 16,0

Gewindebohrzange / *tapping collet*
 ET-1-25 M3-M10

max. 59,4
 min. 57,5



Spannzangenschlüssel für
 innenliegende Mutter
*Clamping wrench for
 internal collet*
 225AX



Hakenschlüssel
 mit Nase
*Hook wrench with
 nose end*
 DIN1810 A 52x55

Copyright **EWS Tool Technologies**
 Weitergabe und Vervielfältigung dieser Unterlage,
 Verwertung und Mitteilung ihres Inhalts nicht
 gestattet, soweit nicht ausdrücklich zugestanden.
 Zuwiderhandlungen verpflichten zu Schadenersatz.

Bemerkung - *Note*

Technische Daten - *technical data*

Weight = 2.804 [kg]
Torque max. (M1/M2) = 25 / 25 [Nm]
Speed max. (n1/n2) = 8000 / 8000 [1/min]
Gear ratio (i)=n1:n2 = 1:1

Benennung - *Title*

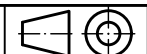
Radial Bohr und Fräskopf
Radial drilling and milling head



Nr. - *No.*
 60.30251809LIM

Technische Änderungen vorbehalten!
Subject to technical modifications!

IDENT: D-EWS-207852



REV: -/-

MNR.

194873

