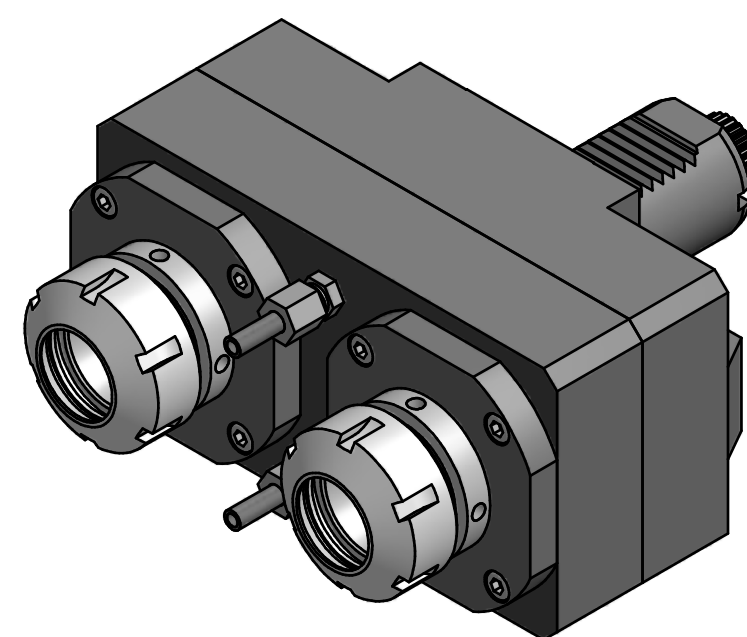
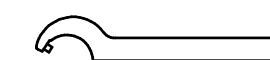


Spannzange / *collet* ER32 DIN6499
Spannbereich / *clamping range*: 2,0 - 20,0

Gewindebohrzange / *tapping collet*
ET-1-32 M5-M12




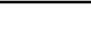


Spannzangenschlüssel
Clamping wrench
232



Hakenschlüssel
mit Zapfen
Hook wrench
with fixed pin
DIN1810 B 45x50

Copyright **EWS Tool Technologies**
Weitergabe und Vervielfältigung dieser Unterlage,
Verwertung und Mitteilung ihres Inhalts nicht
gestattet, soweit nicht ausdrücklich zugestanden.
Zu widerhandlungen verpflichten zu Schadenersatz.

Bemerkung - <i>Note</i>	Technische Daten - <i>technical data</i> <i>Weight</i> = 9.169 [kg] <i>Torque max.</i> (M1/M2) = 50 / 50 each Sp. [Nm] <i>Speed max.</i> (n1/n2) = 6000 / 6000 [1/min] <i>Gear ratio</i> (i)=n1:n2 = 1:1	Benennung - <i>Title</i> Axial Bohr und Fräskopf <i>Axial drilling and milling head</i>	 <div>EWS Weigelt GmbH & Co. KG Maybachstr. 1 D-73066 Ulm www.ews-tools.de</div>	Technische Änderungen vorbehalten! <i>Subject to technical modifications!</i>	 	
			<div><div>Nr. - <i>No.</i></div><div>40.4032DXCTXTK96</div></div>	<div><div>IDENT: D-EWS-145976</div></div>	<div><div>REV: A/-</div></div>	