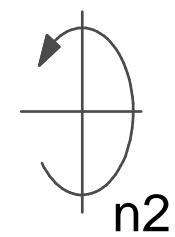
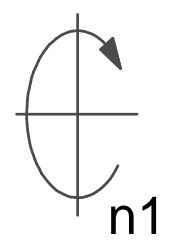


6 | 5 | 4 | 3 | 2 | 1



Spannzange / *collet* ER25 DIN6499
Spannbereich / *clamping range*: 1,0 - 16,0

Gewindebohrzange / *tapping collet*
ET-1-25 M3-M10



max. 67
min. 63,5

Ø42

Ø40

35

Ø30

D

D

C

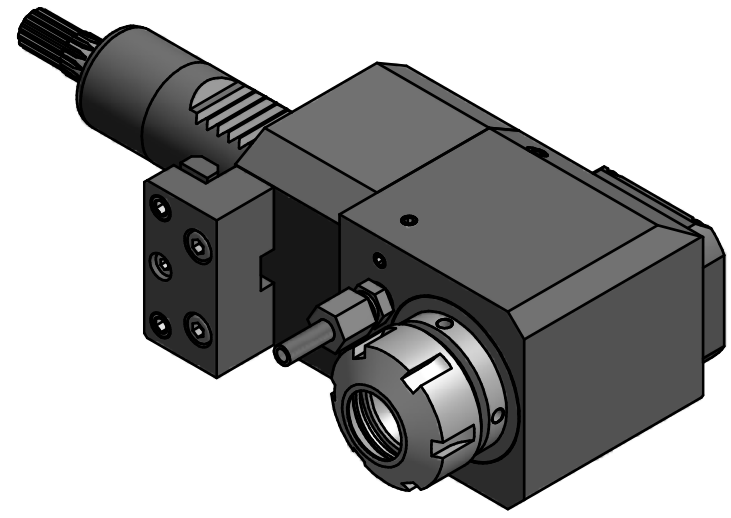
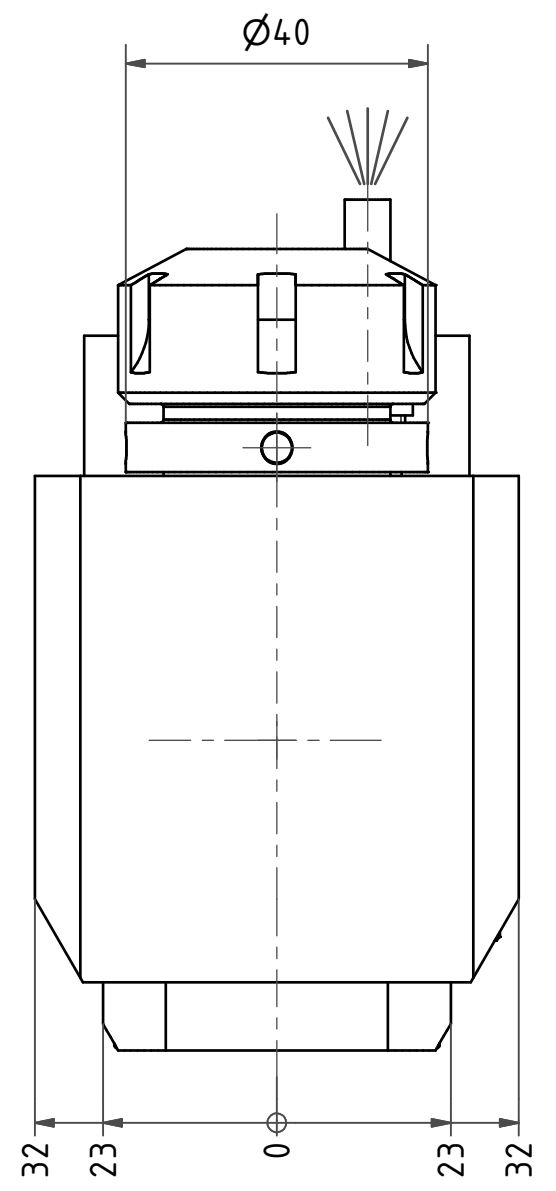
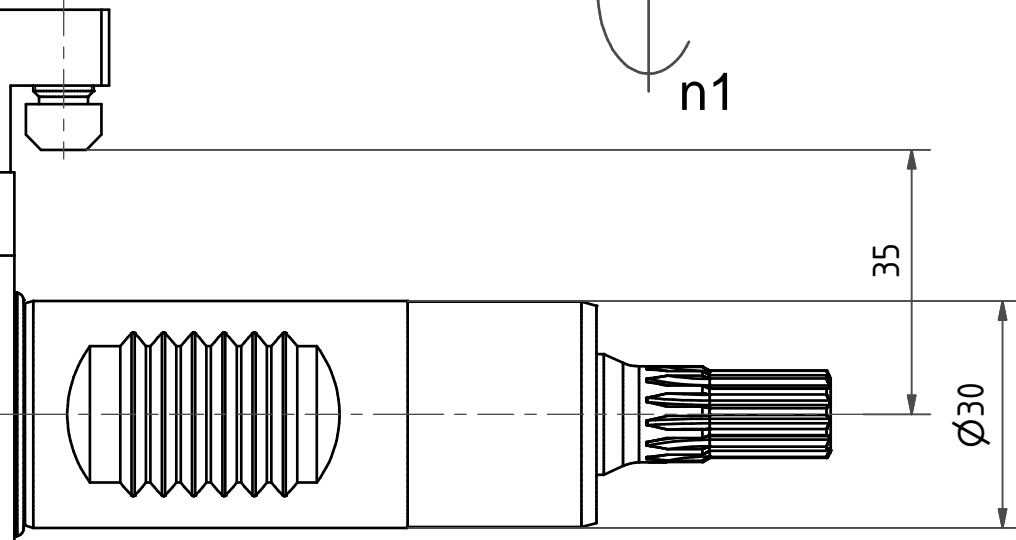
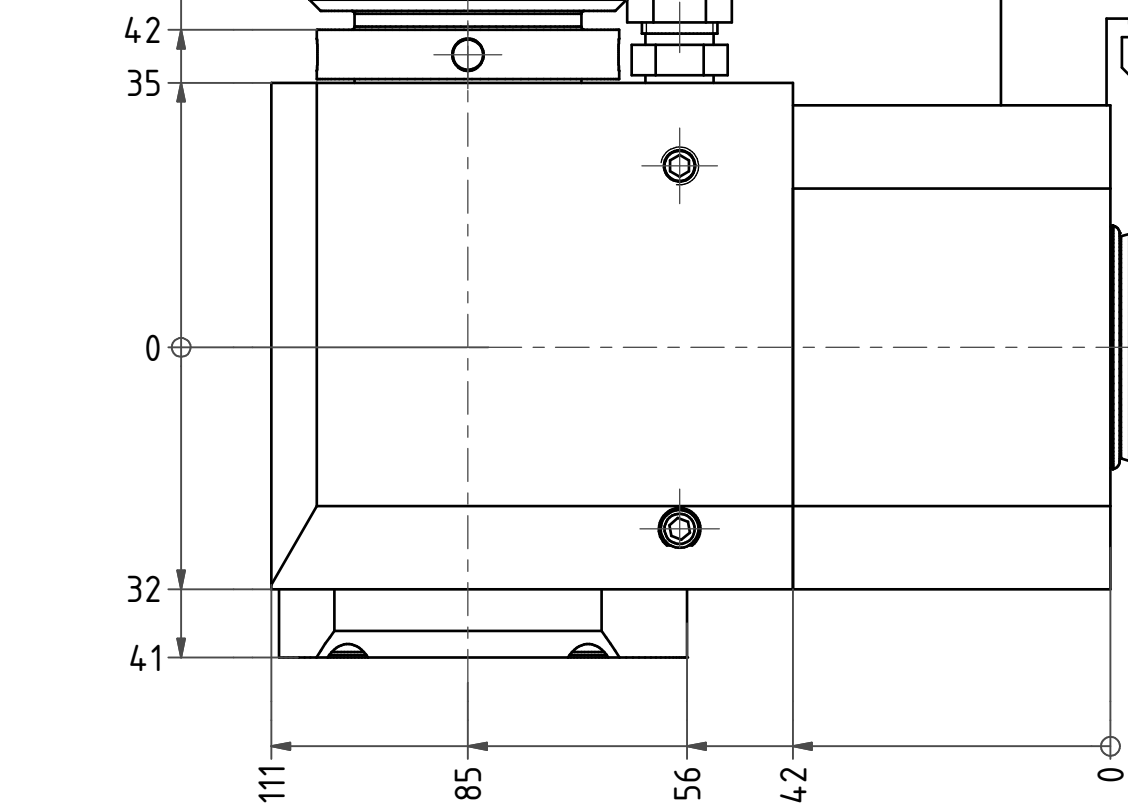
C

B


B

A

A




Hakenschlüssel
mit Zapfen
*Hook wrench
with fixed pin*
DIN1810 B 40x42


Spannzangenschlüssel
Clamping wrench
225

Copyright **EWS Tool Technologies**
Weitergabe und Vervielfältigung dieser Unterlage,
Verwertung und Mitteilung ihres Inhalts nicht
gestattet, soweit nicht ausdrücklich zugestanden.
Zu widerhandlungen verpflichtet zu Schadenersatz.

Bemerkung - <i>Note</i>	Technische Daten - <i>technical data</i> M1 / M2 = 25 / 25 Nm n1 / n2 = 8000 / 8000 1/min i (N1:N2) = 1:1	Benennung - <i>Title</i> Radial Bohr und Fräskopf <i>Radial drilling and milling head</i>	name	date	Technische Änderungen vorbehalten! <i>Subject to technical modifications!</i>		
			drawing	Schmid			23.04.2014
			 EWS Weigete GmbH & Co. KG Maybachstr. 1 D-73066 Uhingen Tel. +49(0)7161/93040-100		Nr. 60.3025QUESTLA35		DIN A3
			MNR: 174096		IDENT: D-EWS-155045 A		Blatt - page 1 (1)

6 | 5 | 4 | 3 | 2 | 1