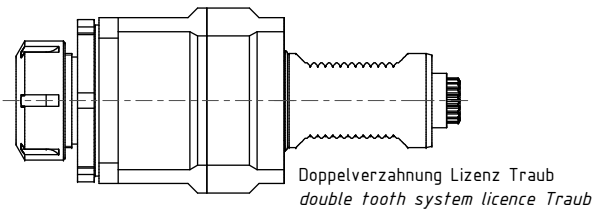
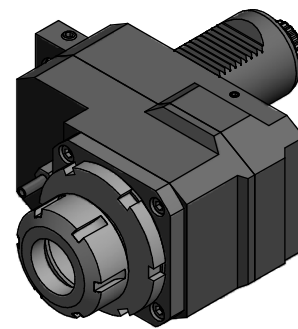


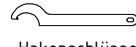
Spannzange / collet ER40 DIN6499
 Spannereich / clamping range: 3,0 - 26,0

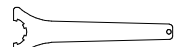
Gewindebohrzange / tapping collet
 ET-1-40 M6-M16



Doppelverzahnung Lizenz Traub
 double tooth system licence Traub






 Hakenschlüssel
 mit Nase
 Hook wrench with
 nose end
DIN1810 A 80x90

 Spannzangenschlüssel
 Clamping wrench
240

Copyright **EWS Tool Technologies**
 Weitergabe und Vervielfältigung dieser Unterlage,
 Verwertung und Mitteilung ihres Inhalts nicht
 gestattet, soweit nicht ausdrücklich zugestanden.
 Zuwiderhandlungen verpflichten zu Schadenersatz.

| | |
|------------------|---|
| Bemerkung - Note | Technische Daten - technical data Weight = 9,267 [kg] Torque max. (M1/M2) = 80 / 160 [Nm] Speed max. (n1/n2) = 6000 / 3000 [1/min] Gear ratio (i)=n1:n2 = 2:1 |
|------------------|---|

| | |
|-------------------|--|
| Bemerkung - Title | |
|-------------------|--|

| | | | |
|--|--|--|---|
|  EWS Werkzeug GmbH & Co. KG <small>Werkzeuge 1 D-72086 Löhningen www.ews-tool.de</small> | Technische Änderungen vorbehalten! Subject to technical modifications! IDENT: DEWS023304 |  REV: -/A PPR |  |
| | Nr. - No 50.50405480RLI2 | 203727 | |