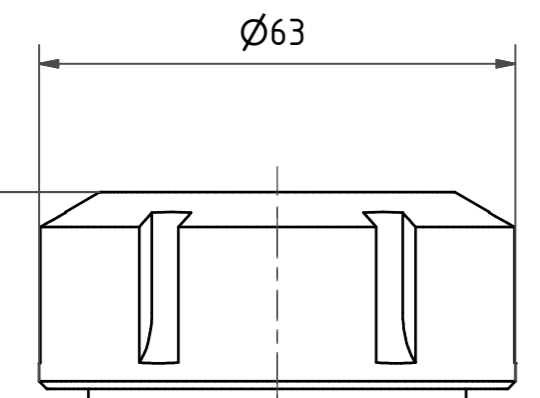
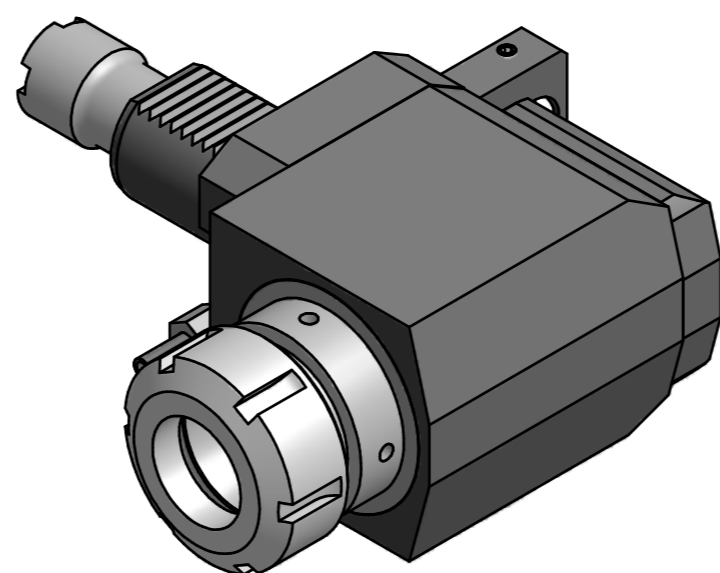
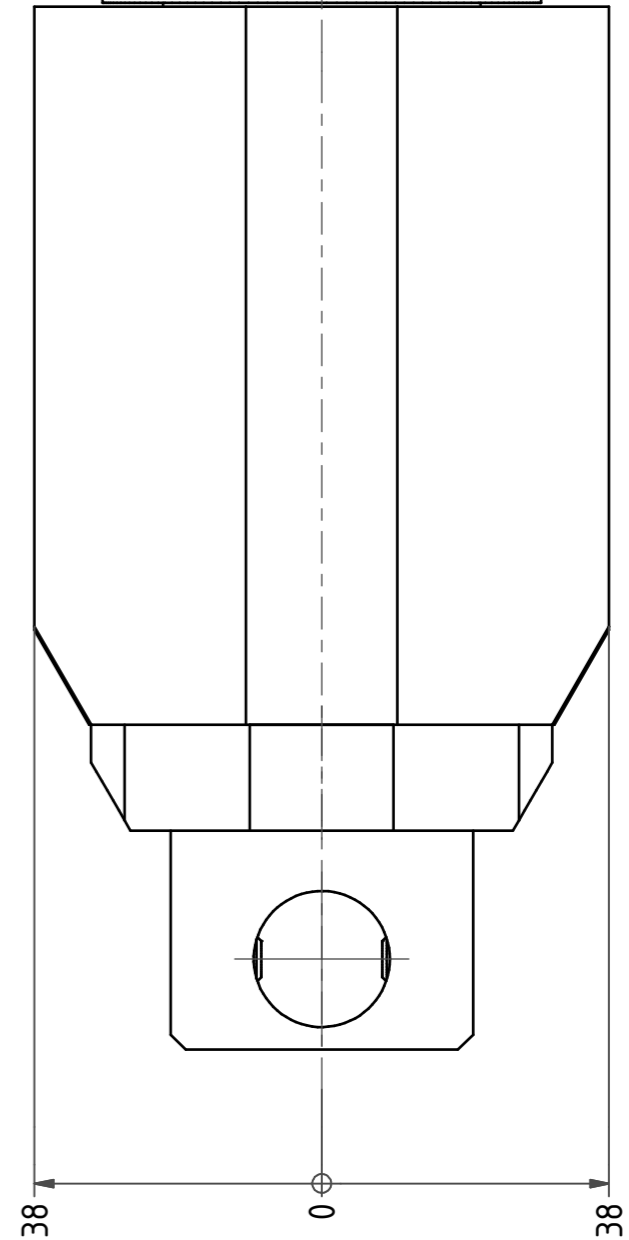
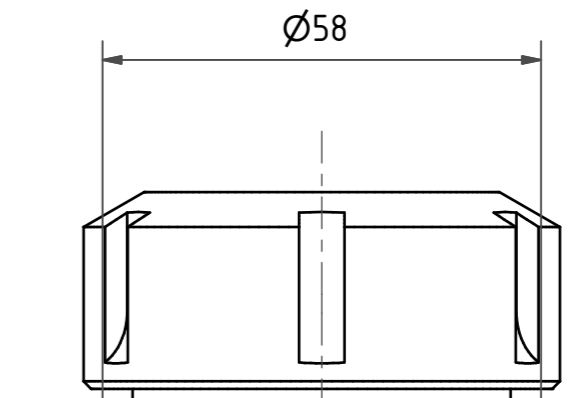
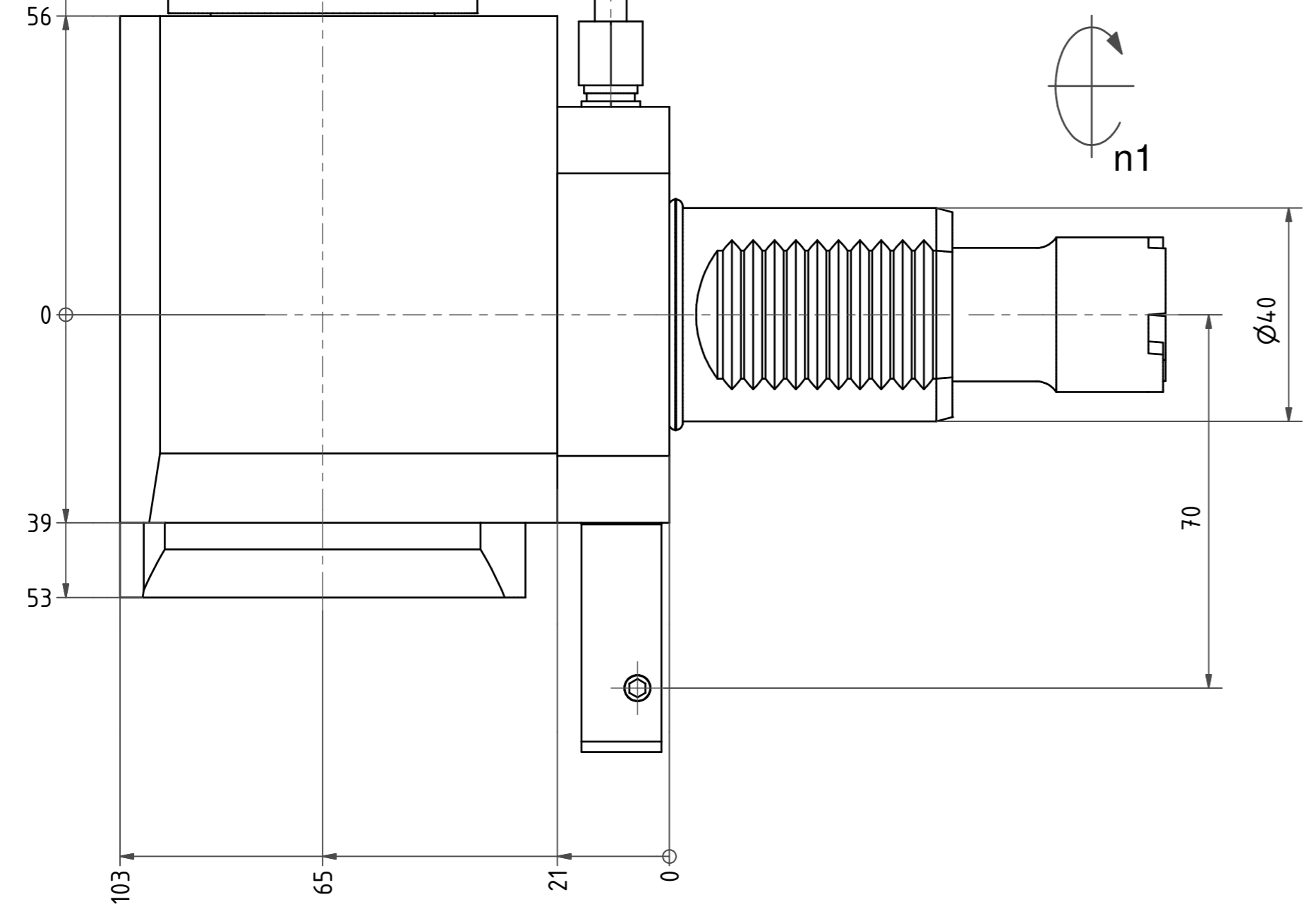
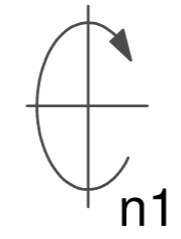


max. 105
min. 101,5



Spannzange / *collet* ER40 DIN6499
Spannbereich / *clamping range*: 3,0 - 26,0

Gewindebohrzange / *tapping collet*
ET-1-40 M6-M16



Hakenschlüssel
mit Zapfen
*Hook wrench
with fixed pin*
DIN1810 B 58x62

Spannzangenschlüssel
Clamping wrench
240

Copyright **EWS Tool Technologies**
Weitergabe und Vervielfältigung dieser Unterlage,
Verwertung und Mitteilung ihres Inhalts nicht
gestattet, soweit nicht ausdrücklich zugestanden.
Zuwendungen verpflichten zu Schadenersatz.

Bemerkung - <i>Note</i>	Technische Daten - <i>technical data</i>	Benennung - <i>Title</i>	<table border="1"> <tr> <th>name</th> <th>date</th> </tr> <tr> <td>Theiss</td> <td>12.08.2014</td> </tr> </table>	name	date	Theiss	12.08.2014	Technische Änderungen vorbehalten! <i>Subject to technical modifications!</i>
	name			date				
Theiss	12.08.2014							
M ₁ / M ₂ = 40 / 80 Nm n ₁ / n ₂ = 6000 / 3000 1/min i (N ₁ :N ₂) = 2:1	Radial Bohr und Fräskopf <i>Radial drilling and milling head</i>	Nr. 60.4040LB15LI2	DIN A2					
			EWS <small>Weigete GmbH & Co. KG Maybachstr. 1 D-73966 Uhingen Tel. +49(0)7161/93040-10</small>	File: D-EWS-161460-.idw	Blatt - <i>page</i> 1 (1)			