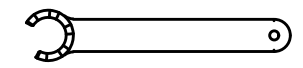
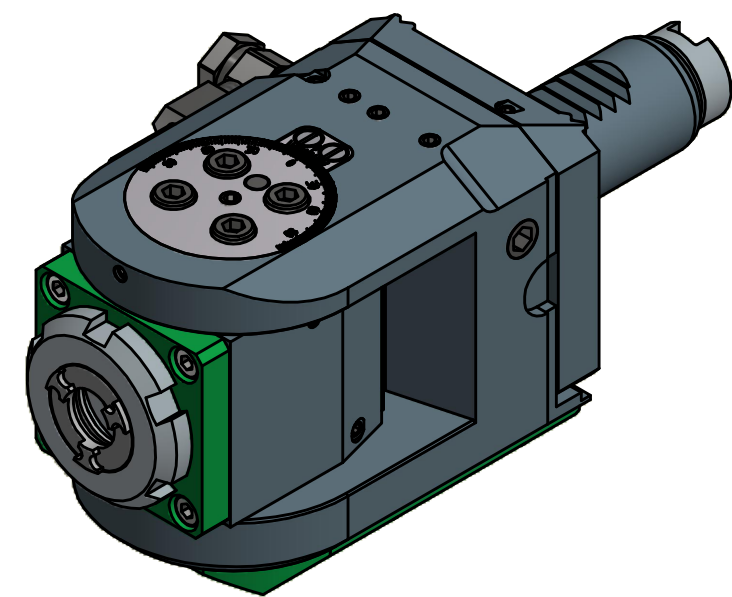
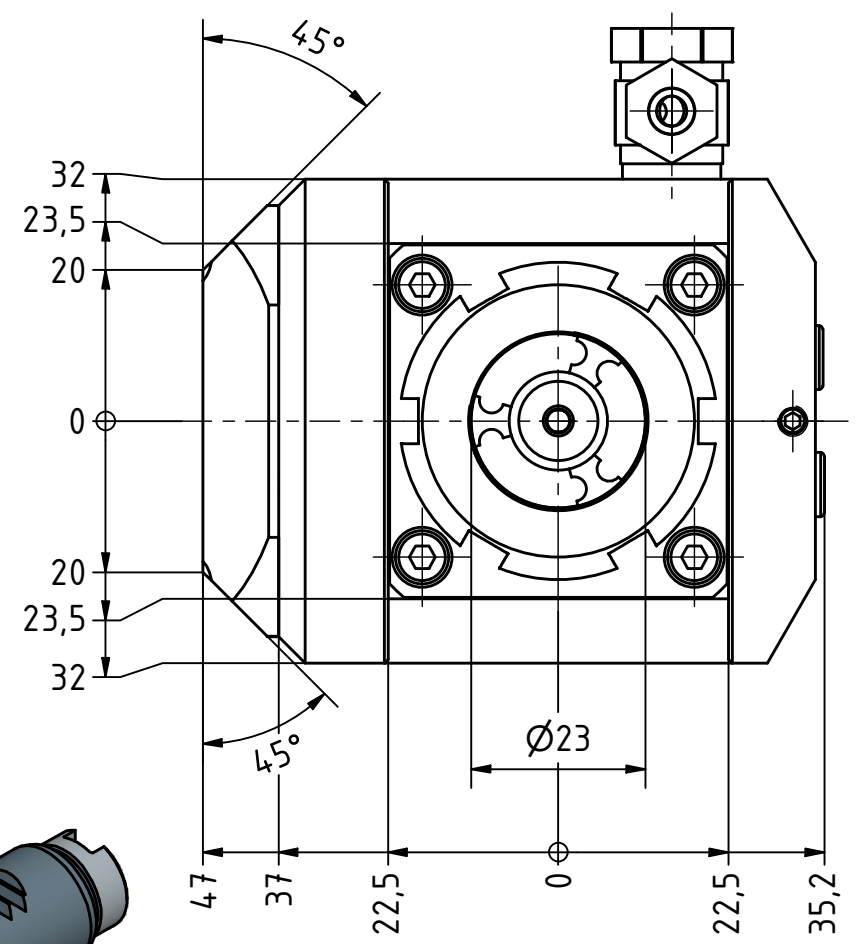
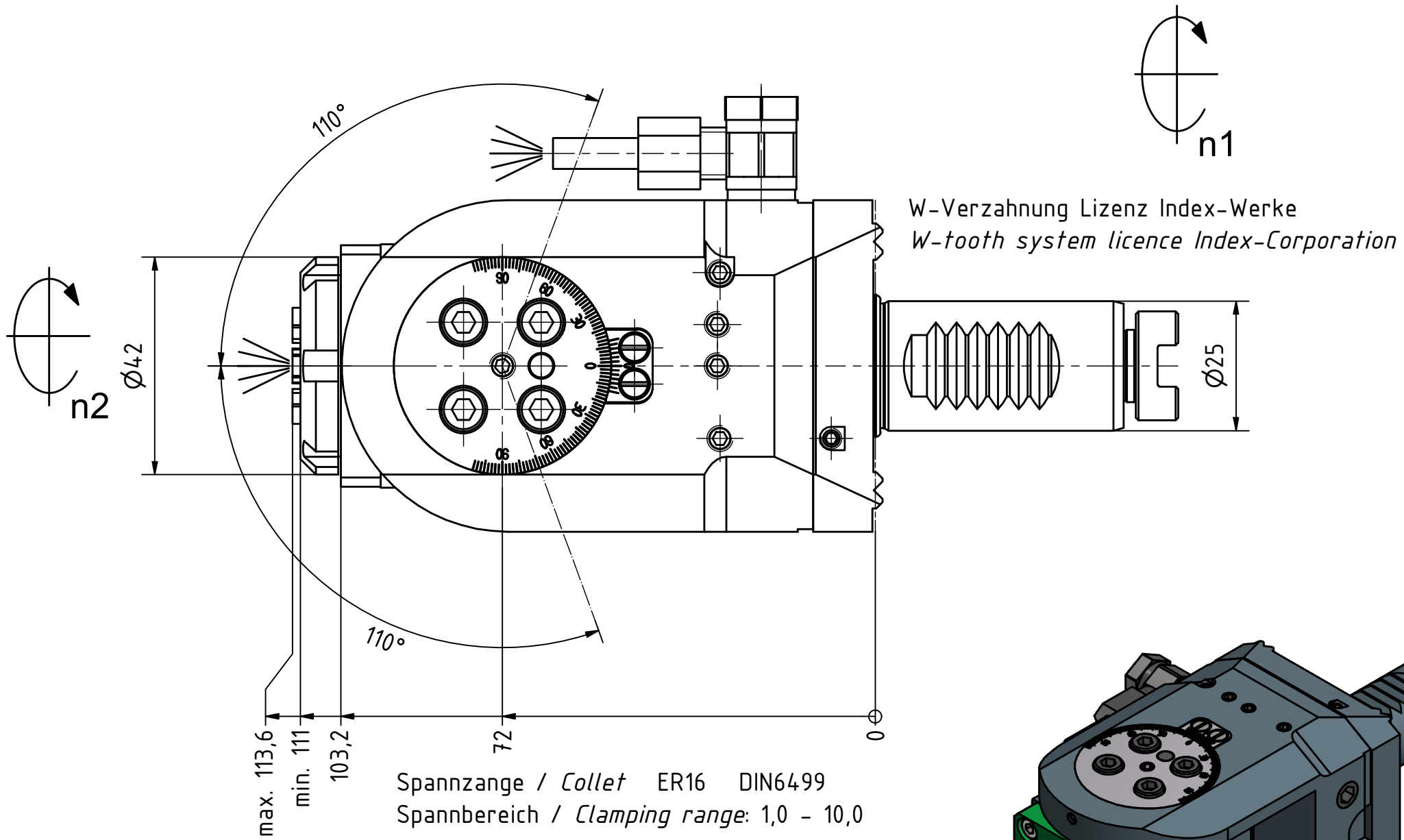


Schwenkbereich ±110°
Swivel area ±110°

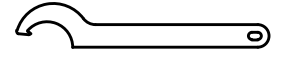
DRY RUN
Ceramics Seal

1/min
Highspeed

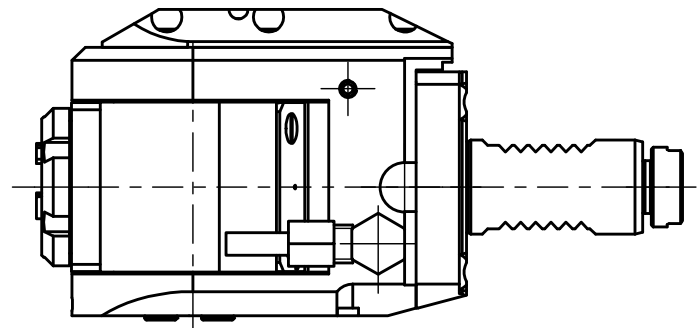
Tech Details



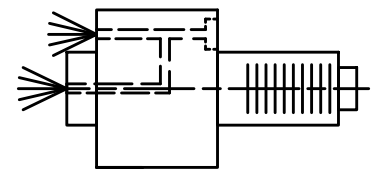
Spannzangenschlüssel für
innenliegende Mutter
Clamping wrench for
internal collet
216AX



Hakenschlüssel
mit Nase
Hook wrench with
nose end
DIN1810 A 40x42



Doppelverzahnung Lizenz Traub
double tooth system licence Traub



Innen- und Aussenkuehlung / Inside and outside coolant supply
Kuehlmittelfiltrierung<50µ / coolant filtration<50µ

Copyright **EWS Tool Technologies**
Weitergabe und Vervielfaeltigung dieser Unterlage,
Verwertung und Mitteilung ihres Inhalts nicht
gestattet, soweit nicht ausdrecklich zugestanden.
Zuwiderhandlungen verpflichten zu Schadenersatz.

<p>Bemerkung - Note</p> <p>Für Trockenlauf geeignet! Use without coolant fluid allowed!</p>	<p>Technische Daten - technical data</p> <p>Weight = 3.369 [kg] Torque max. (M1/M2) = 16 / 8 [Nm] Speed max. (n1/n2) = 6000 / 12000 [1/min] Gear ratio (i)=n1:n2 = 1:2 Pressure (pmax) = 70 [bar]</p>	<p>Benennung - Title</p> <p>Schwenkkopf Swivel head</p>	<p>EWS Tool Technologies</p> <p>EWS Weigle GmbH & Co. KG Maybachstr. 1 D-73066 Utingen www.ews-tools.de</p>	<p>Technische Aenderungen vorbehalten! Subject to technical modifications!</p> <p>IDENT: DEWS100609</p> <p>Nr. - No. 63.2516G200RLIKDGLI1WIM</p>	<p>REV: -/B</p> <p>MNR. 218134</p>	
---	---	---	--	--	------------------------------------	--