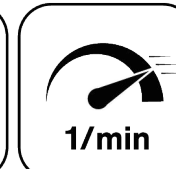




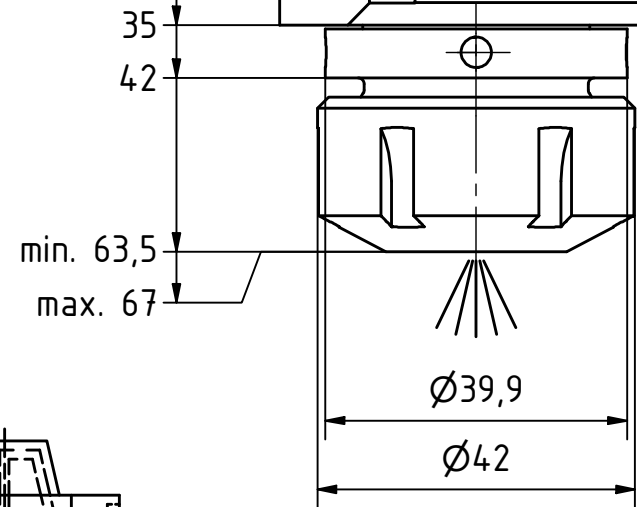
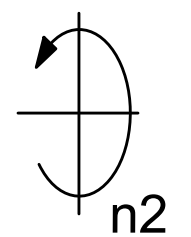
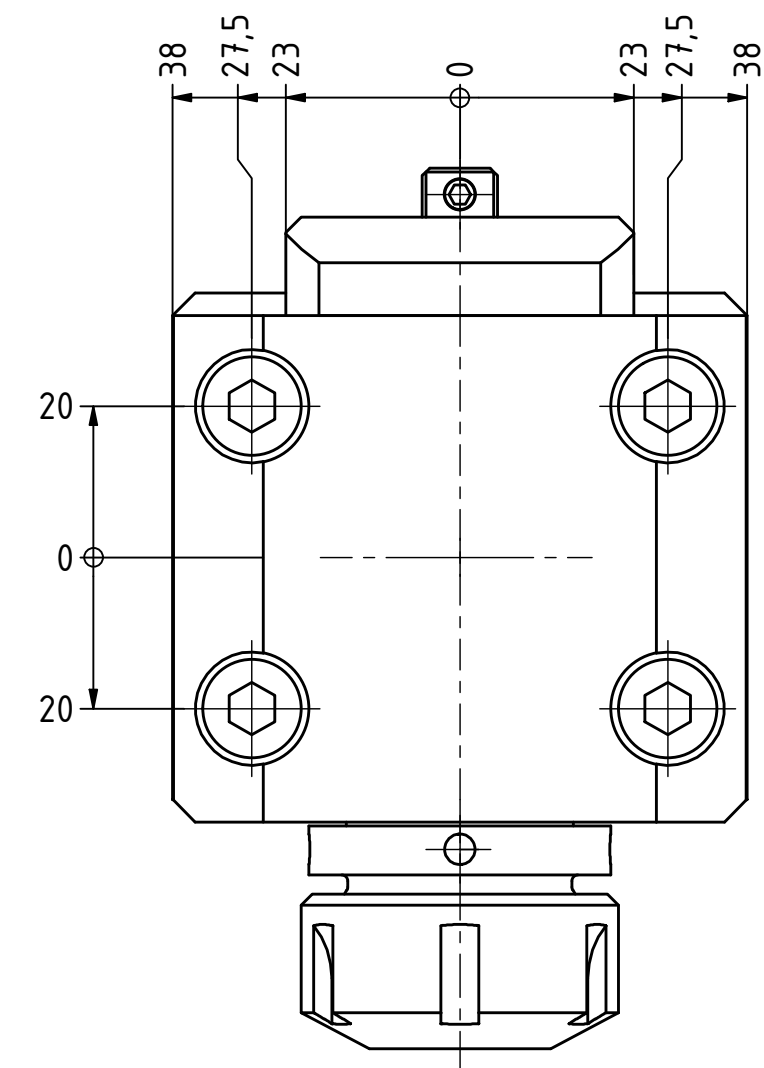
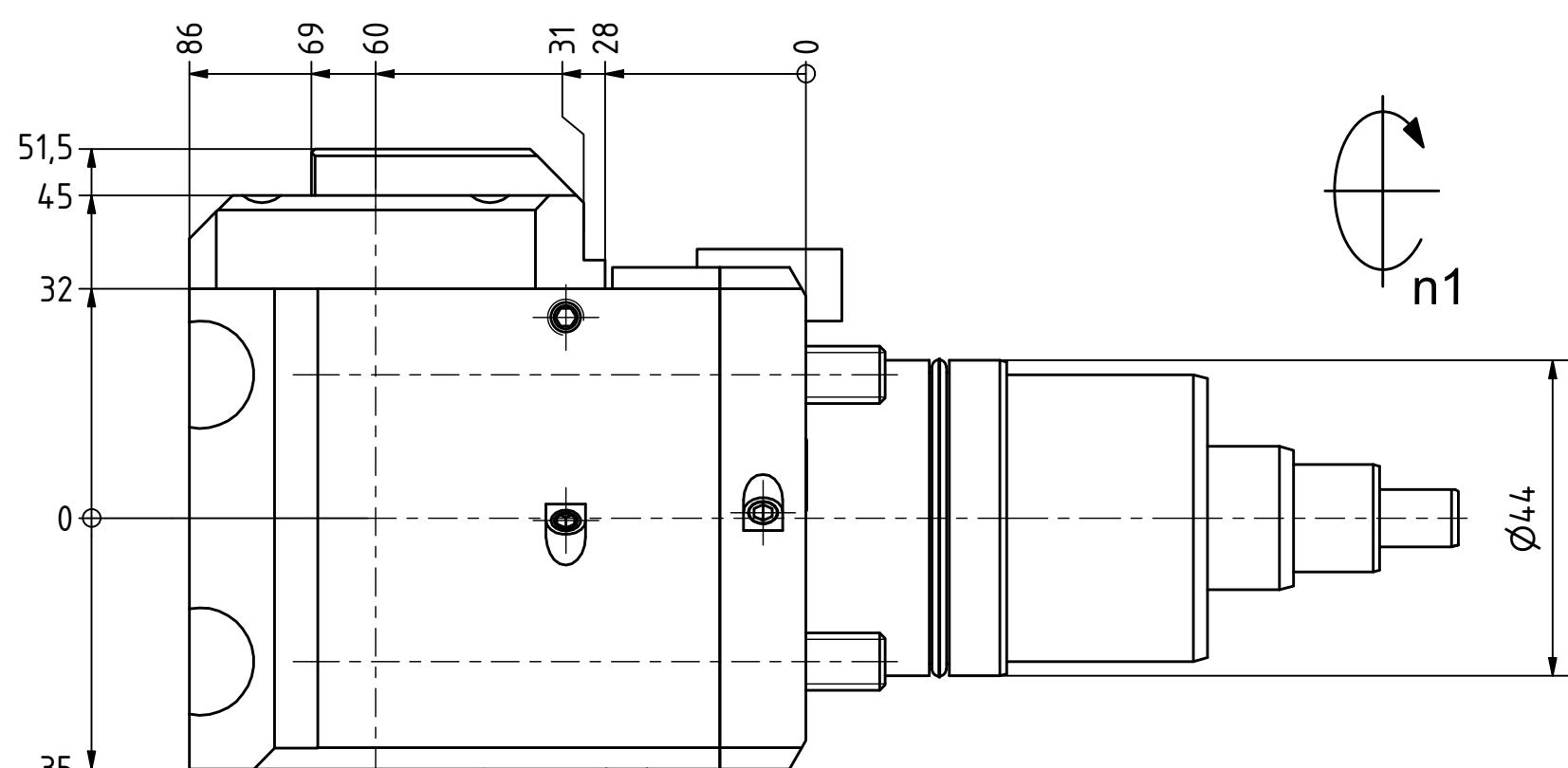
Ceramic Seal



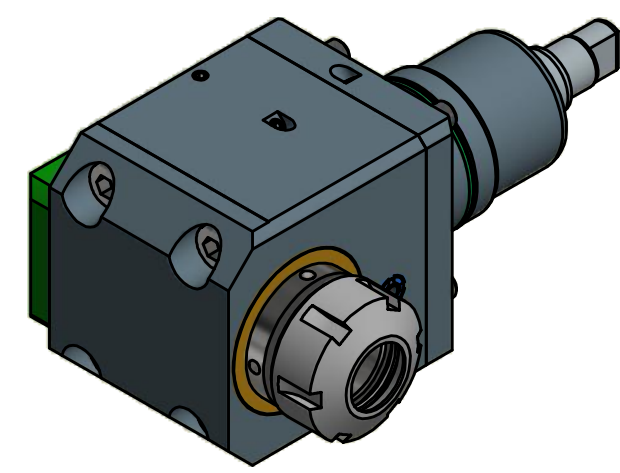
Highspeed



Tech Details



Spannzange / collet ER25 DIN6499  
Spannbereich / clamping range: 1,0 - 16,0



Hakenschlüssel mit Zapfen  
Hook wrench with fixed pin  
DIN1810 B 40x42

Spannzangenschlüssel  
Clamping wrench  
225

Innen- und Aussenkuehlung / Inside and outside coolant supply  
Kuehlmittelfiltrierung-50µ / coolant filtration<50µ

Copyright **EWS Tool Technologies**  
Weitergabe und Vervielfaeltigung dieser Unterlage, Verwertung und Mitteilung ihres Inhalts nicht gestattet, soweit nicht ausdrecklich zugestanden. Zuwiderhandlungen verpflichten zu Schadenersatz.

Bemerkung - Note  
Für Trockenlauf geeignet!  
Use without coolant fluid allowed!

Technische Daten - technical data	
Weight	= 3,886 [kg]
Torque max. (M1/M2)	= 24 / 12 [Nm]
Speed max. (n1/n2)	= 6000 / 12000 [1/min]
Gear ratio (i)=n1:n2	= 1:2
Pressure (pmax)	= 70 [bar]

Benennung - Title  
**Radial Bohr und Fräskopf**  
Radial drilling and milling head

**EWS** Tool Technologies  
EWS Weigle GmbH & Co. KG  
Maybachstr. 1  
D-73066 Uhingen  
www.ews-tools.de

Nr. - No.  
**60.4425NTY3IKDI1**

Technische Aenderungen vorbehalten! Subject to technical modifications!	
IDENT: DEWS106999	REV: -/B
MNR.	219559

