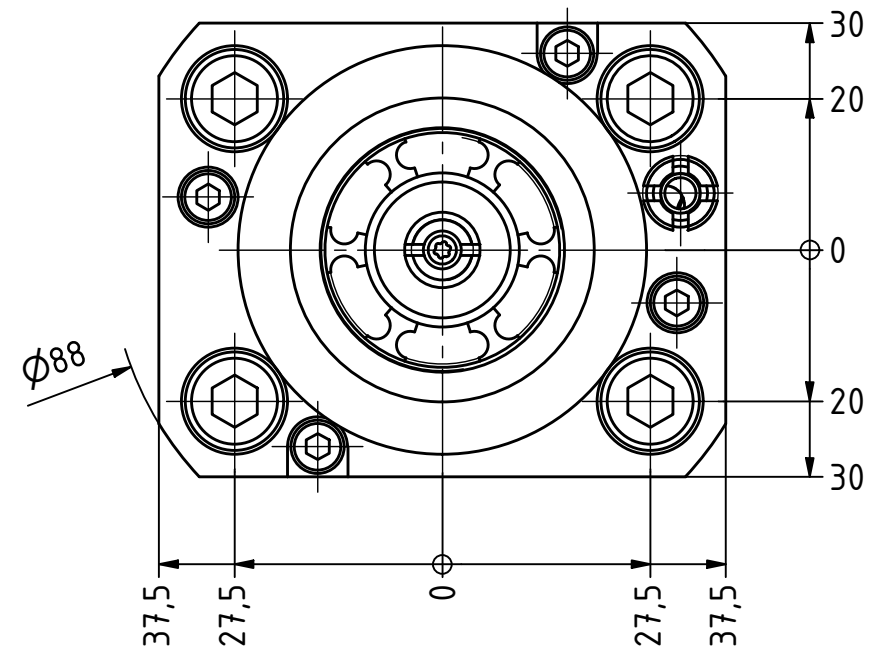
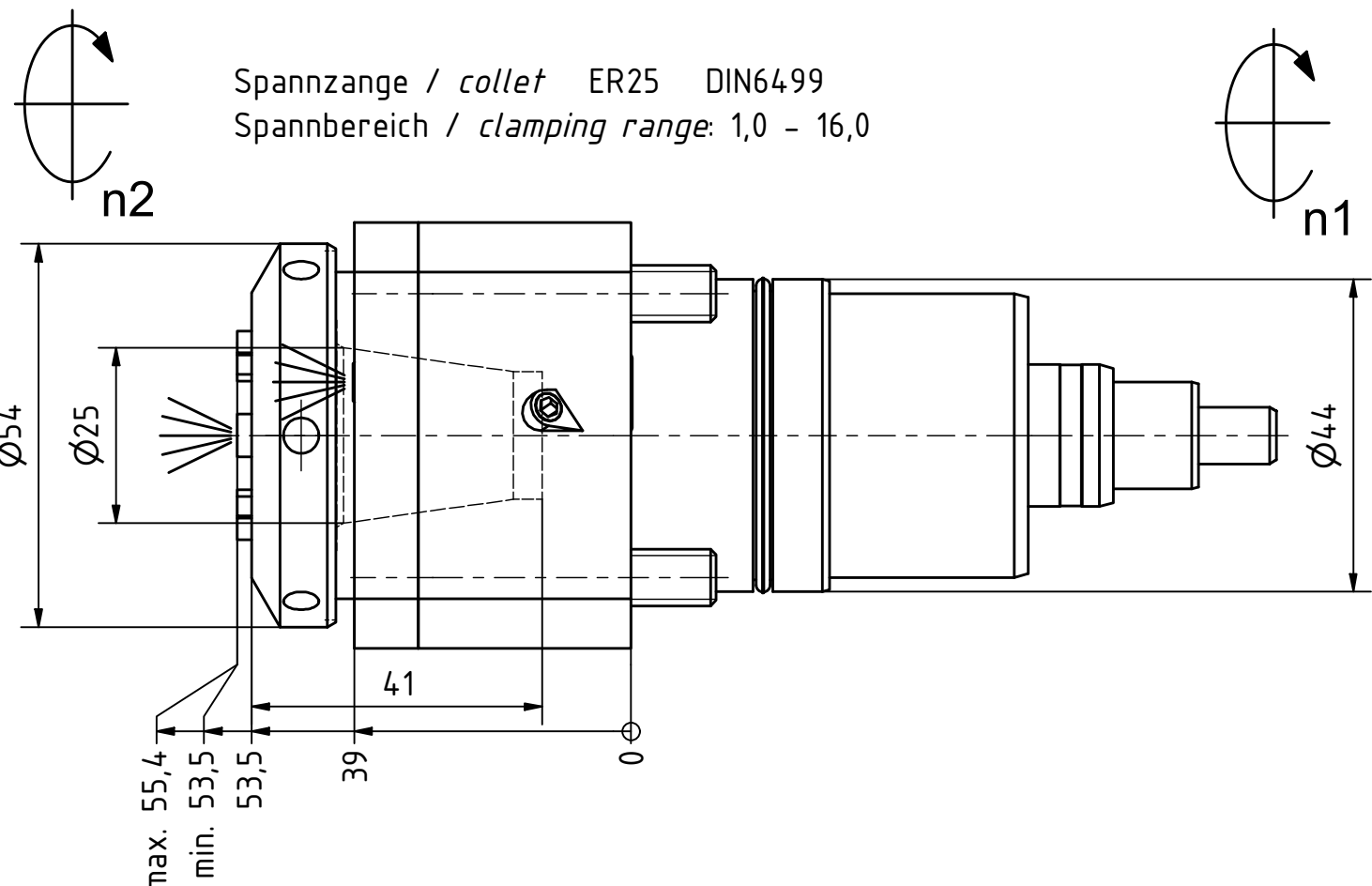


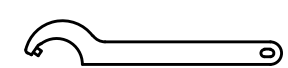
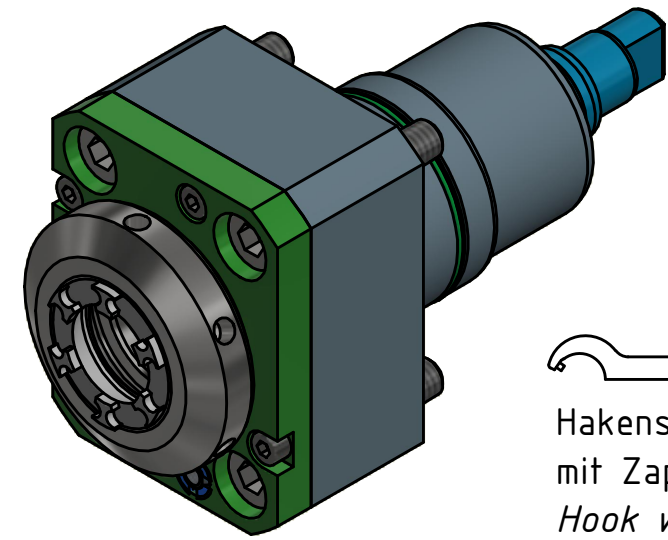
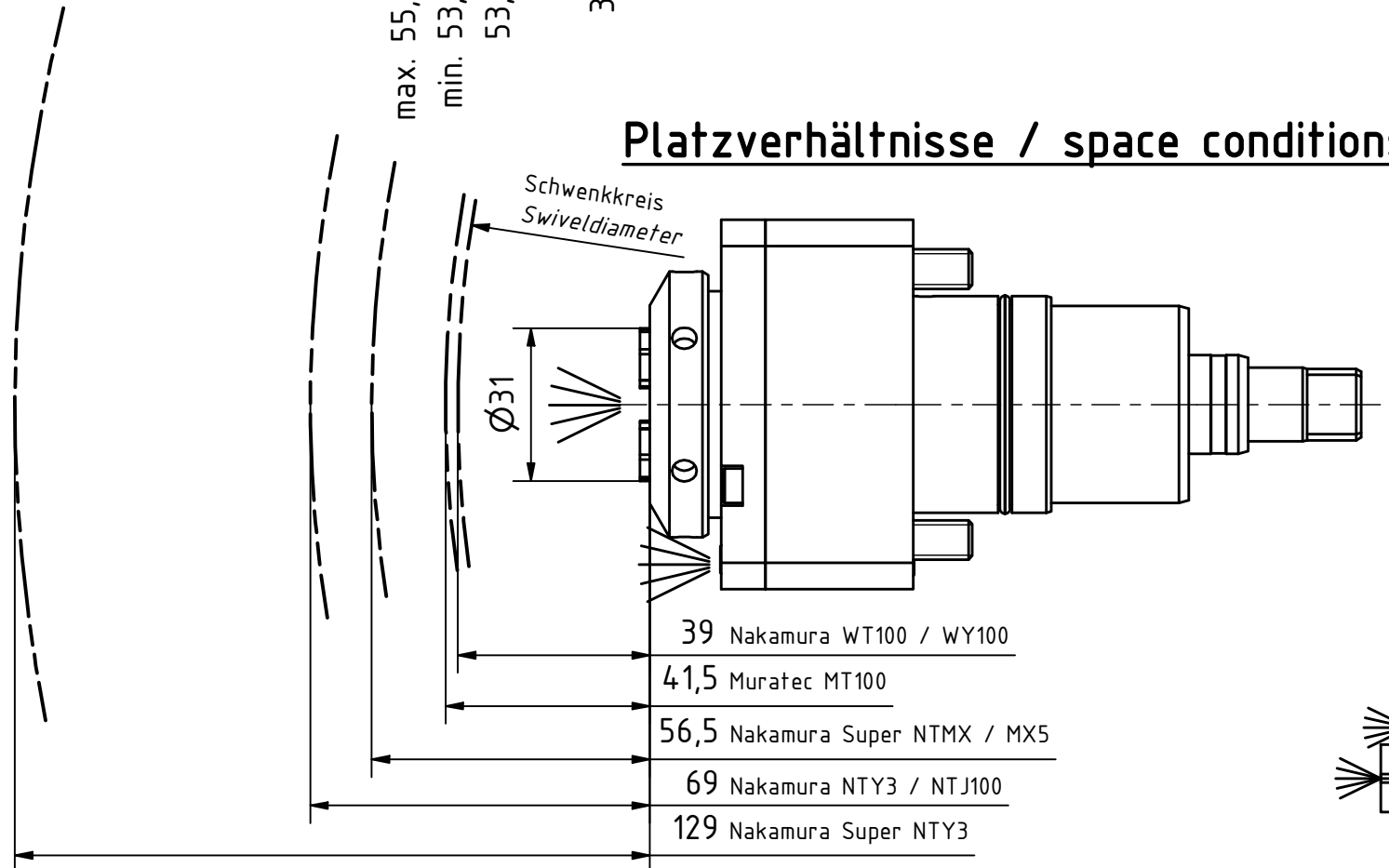


Ceramic Seal

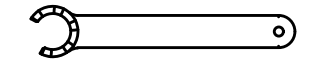
Tech Details



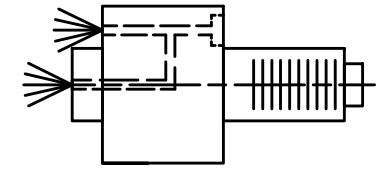
Platzverhältnisse / space conditions



Hakenschlüssel mit Zapfen
Hook wrench with fixed pin
DIN1810 B 52x55



Spannzangenschlüssel für innenliegende Mutter
Clamping wrench for internal collet
225AX



Innen- und Aussenkuehlung / Inside and outside coolant supply
Kuehlmittelfiltrierung 50μ / coolant filtration 50μ

Copyright **EWS Tool Technologies**
Weitergabe und Vervielfaeltigung dieser Unterlage, Verwertung und Mitteilung ihres Inhalts nicht gestattet, soweit nicht ausdrecklich zugestanden. Zuwiderhandlungen verpflichten zu Schadenersatz.

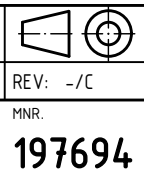
Bemerkung - Note
Für Trockenlauf geeignet!
Use without coolant fluid allowed!

Technische Daten - technical data
Weight = 1.902 [kg]
Torque max. (M1/M2) = 25 / 25 [Nm]
Speed max. (n1/n2) = 6000 / 6000 [1/min]
Gear ratio (i)=n1:n2 = 1:1
Pressure (pmax) = 70 [bar]

Benennung - Title
Axial Bohr und Fräskopf
Axial drilling and milling head

EWS Tool Technologies
EWS Weigele GmbH & Co. KG
Maybachstr. 1
D-73066 Uthingen
www.ews-tools.de
Nr. - No.
40.4425NTY3IKCIM

Technische Aenderungen vorbehalten!
Subject to technical modifications!
IDENT: DEWS133425
REV: -/C
MNR.
197694



QR