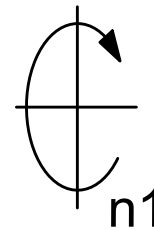
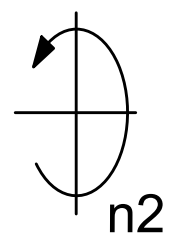
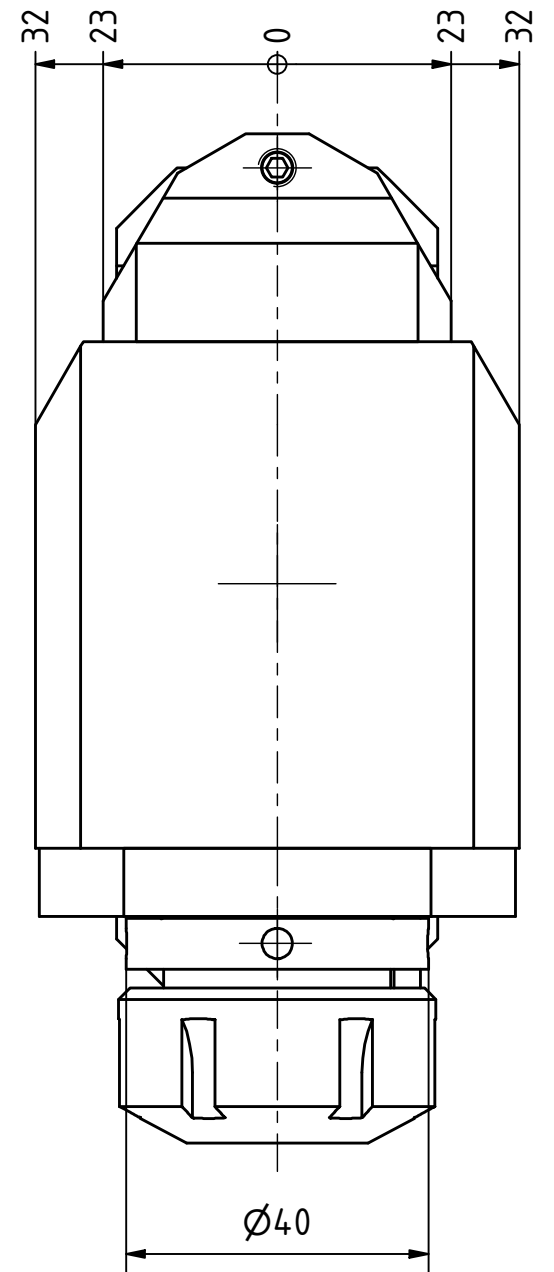
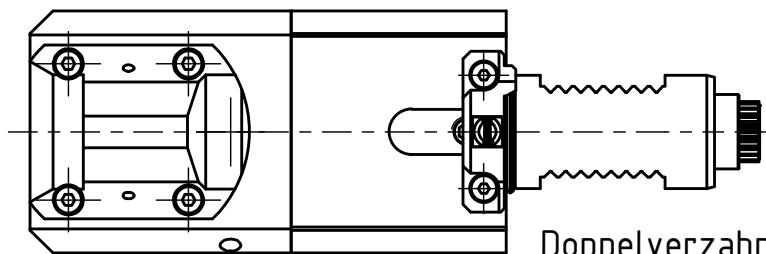
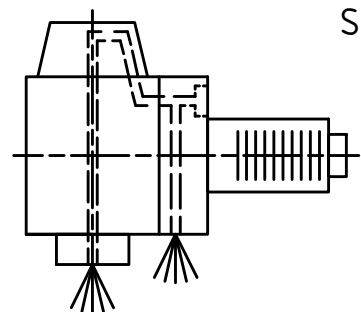


Trifix Anzugsdrehmoment 25 Nm  
 Trifix clamping torque 25 Nm

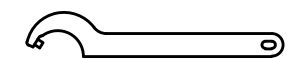
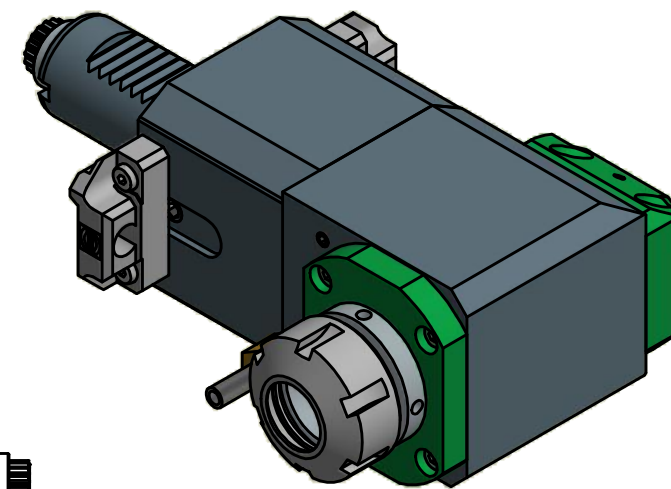


min. 72,5  
 max. 76

Spannzange / collet ER25 DIN6499  
 Spannbereich / clamping range: 1,0 - 16,0



Doppelverzahnung Lizenz Traub  
 double tooth system licence Traub



Hakenschlüssel  
 mit Zapfen  
 Hook wrench  
 with fixed pin  
 DIN1810 B 40x42



Spannzangenschlüssel  
 Clamping wrench  
 225

Innen- und Aussenkuehlung / Inside and outside coolant supply  
 Kein Trockenlauf / No dry run  
 Kuehlmittelfiltrierung <math>50\mu</math> / coolant filtration <math>50\mu</math>

Copyright **EWS Tool Technologies**  
 Weitergabe und Vervielfaeltigung dieser Unterlage,  
 Verwertung und Mitteilung ihres Inhalts nicht  
 gestattet, soweit nicht ausdrecklich zugestanden.  
 Zuwiderhandlungen verpflichten zu Schadenersatz.

Bemerkung - Note  
 Nicht ohne Kuehlmittel betreiben!  
 Not for use without coolant-fluid!  
 mit Kegelrollenlager  
 with taper roller bearing(s)

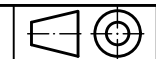
Technische Daten - technical data  
 Weight = 4.372 [kg]  
 Torque max. (M1/M2) = 25 / 25 [Nm]  
 Speed max. (n1/n2) = 5000 / 5000 [1/min]  
 Gear ratio (i)=n1:n2 = 1:1  
 Pressure (pmax) = 70 [bar]

Benennung - Title  
 Radial Bohr und Fräskopf  
 Radial drilling and milling head



Nr. - No.  
 60.3025KRLCTXRLIKTFL

Technische Aenderungen vorbehalten!  
 Subject to technical modifications!  
 IDENT: DEWS003952



REV: -/A

MNR.  
 199779

