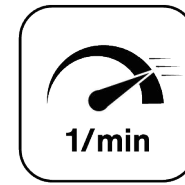
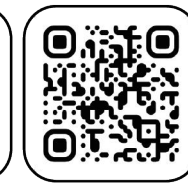


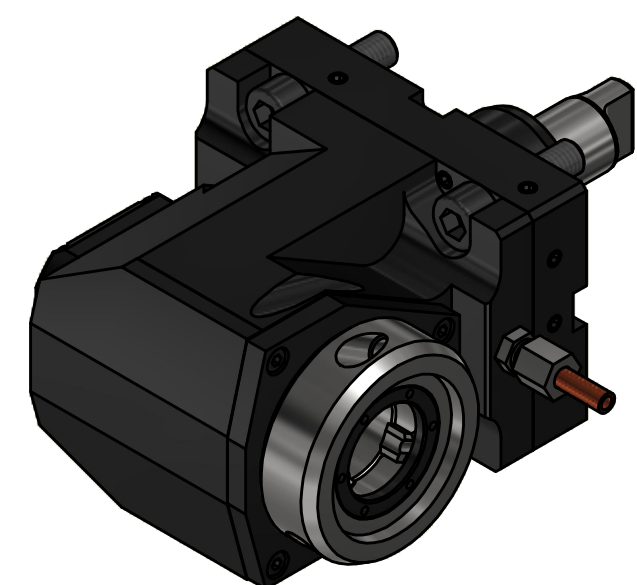
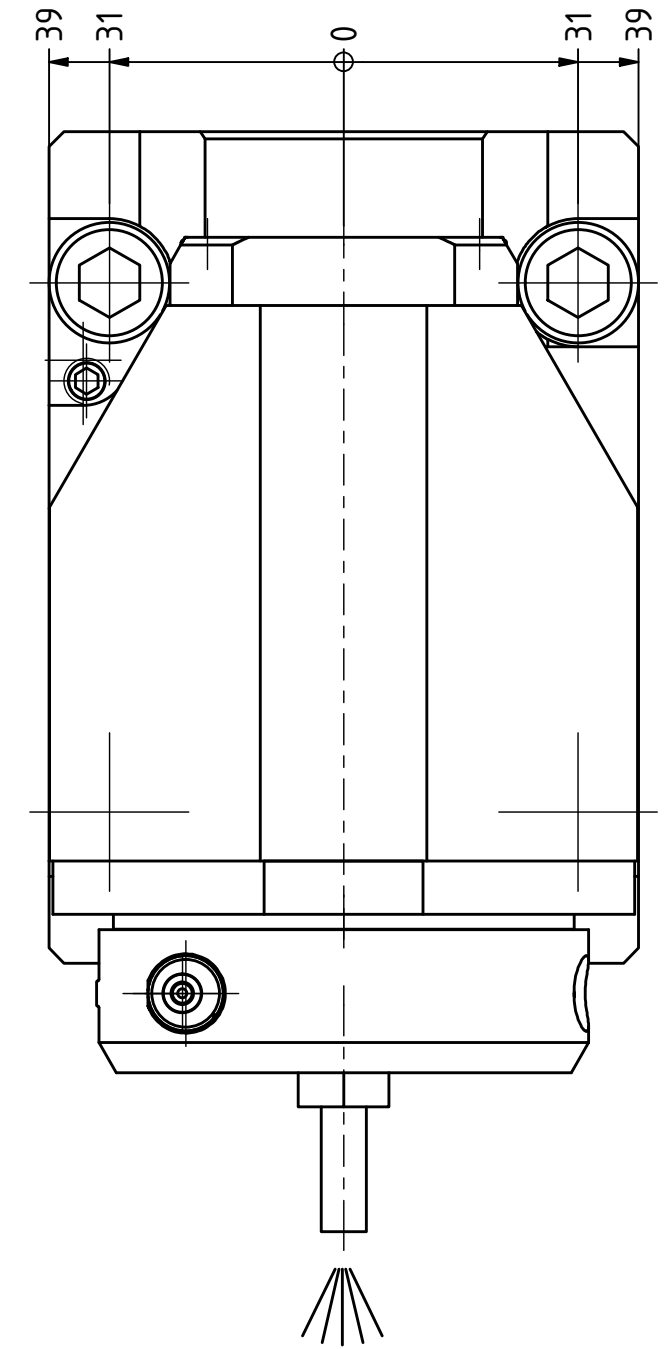
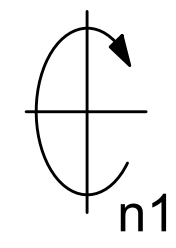
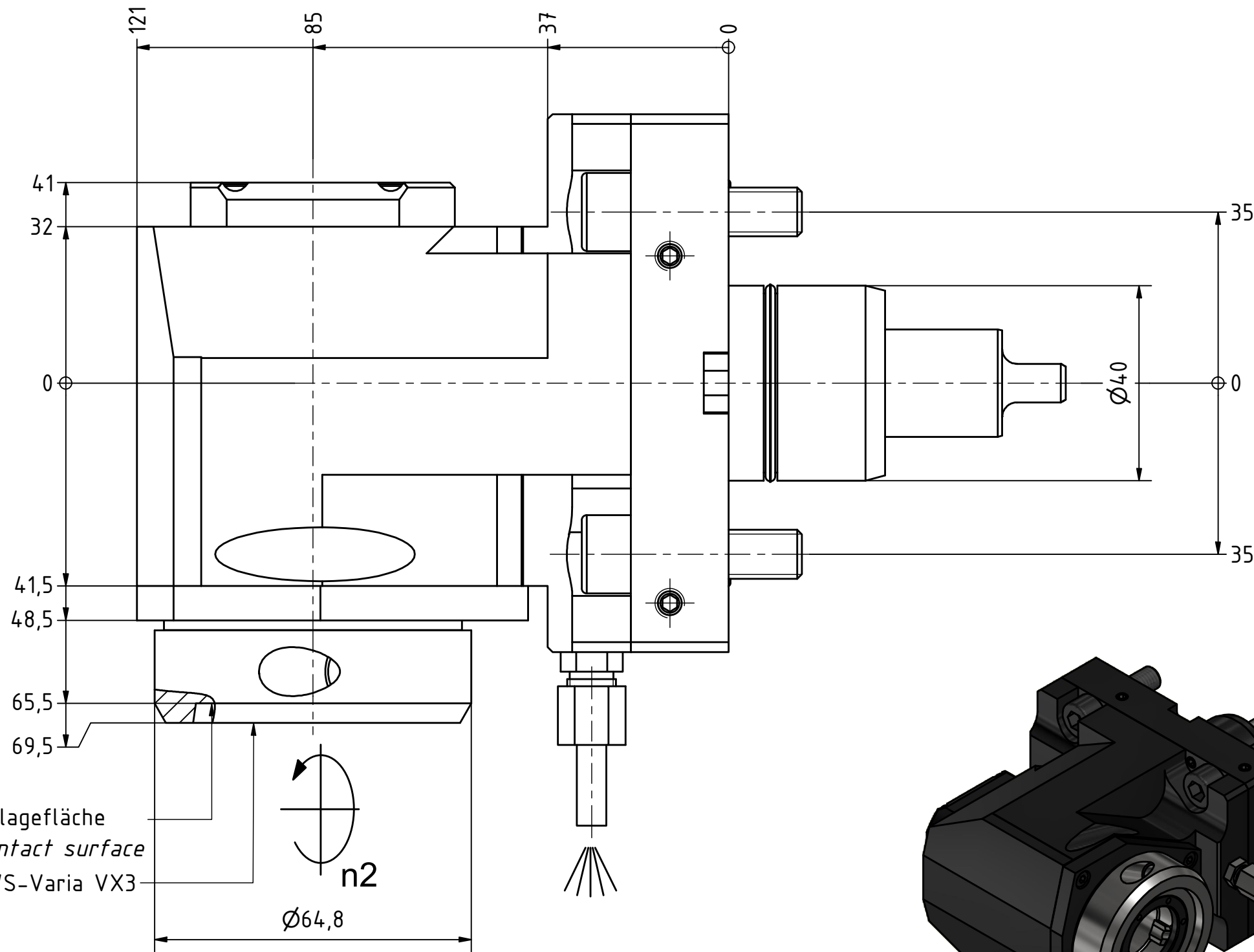
EWS.Varia



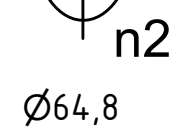
Highspeed



Tech  
Details



Anlagefläche  
contact surface  
EWS-Varia VX3



Copyright **EWS Tool Technologies**  
Weitergabe und Vervielfaeltigung dieser Unterlage,  
Verwertung und Mitteilung ihres Inhalts nicht  
gestattet, soweit nicht ausdrecklich zugestanden.  
Zuwiderhandlungen verpflichten zu Schadenersatz.

Bemerkung - Note	

Technische Daten - technical data	
Weight	= 5.607 [kg]
Torque max. (M1/M2)	= 32 / 32 [Nm]
Speed max. (n1/n2)	= 12000 / 12000 [1/min]
Gear ratio (i)=n1:n2	= 1:1

Benennung - Title	
<b>Radial Bohr und Fräskopf</b>	
<b>Radial drilling and milling head</b>	

<b>EWS</b> Tool Technologies	EWS Weigle GmbH & Co. KG Maybachstr. 1 D-73066 UHINGEN www.ews-tools.de
	Nr. - No. <b>60.40VX3NZHSD12</b>

Technische Aenderungen vorbehalten! Subject to technical modifications!
IDENT: DEWS231187

REV: -/C
MNR. <b>174167</b>

