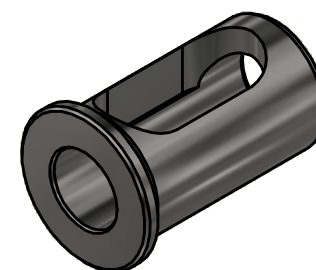


Technical drawing of a circular part. The top view shows a circle with a central hole. The outer diameter is labeled as  $\varnothing 24$ . The side view shows a cross-section of the part, with a central hole. The drawing includes dimension lines and arrows indicating the diameters.



MNR.

QR

Reduzierhülse  
*Reducing sleeve*

28.2012S

IDENT: DEWS137839

**EWS** Weigele GmbH & Co. KG  
Maybachstr. 1  
D-73066 Uchingen  
[www.ews-tools.de](http://www.ews-tools.de)