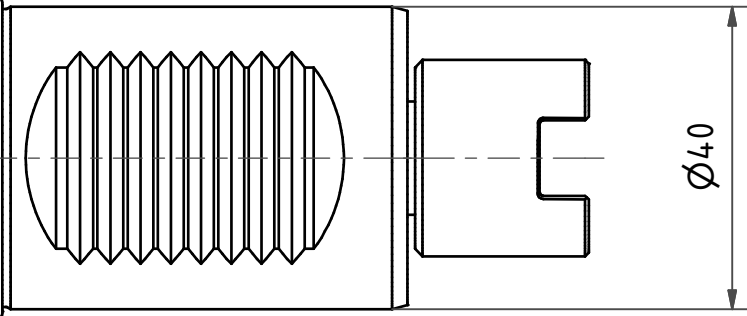
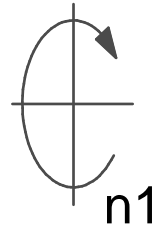
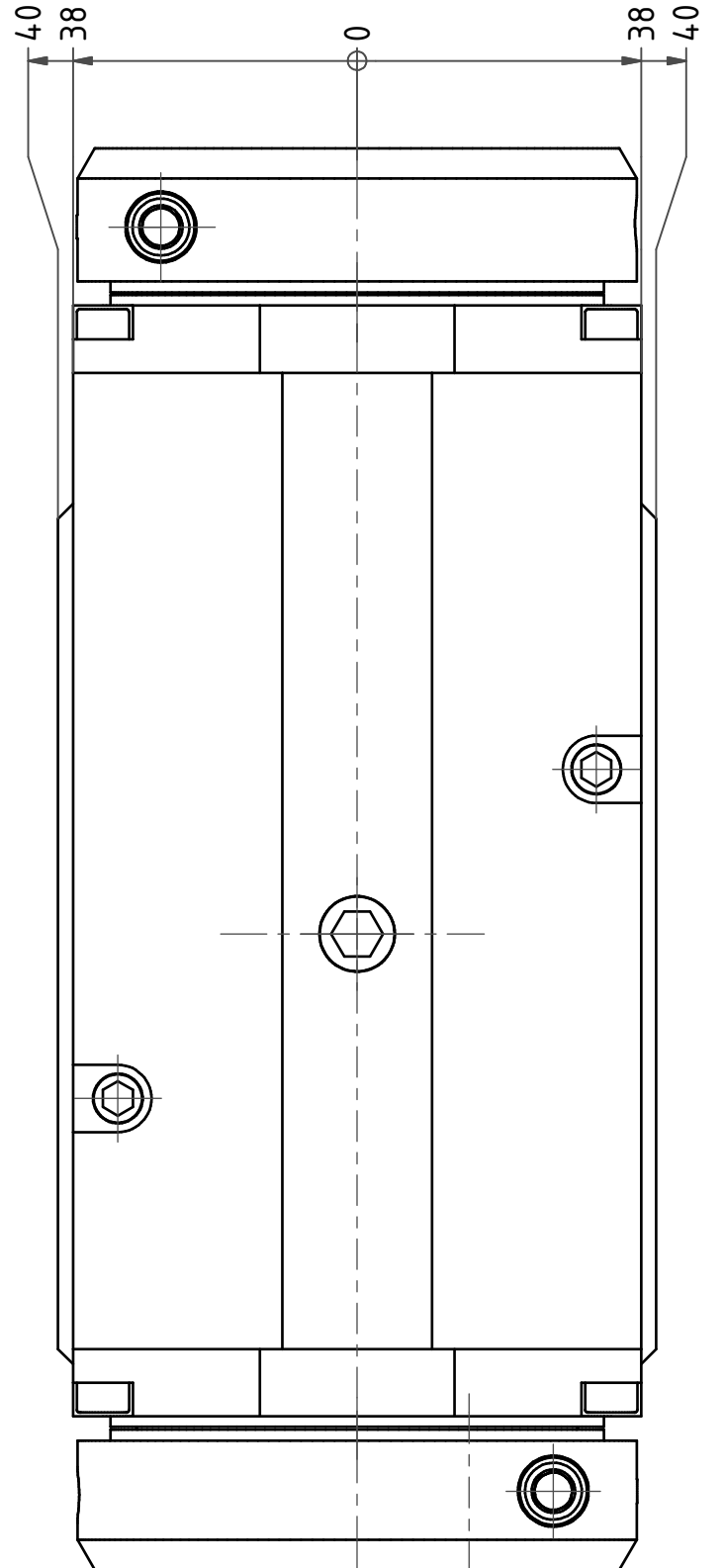
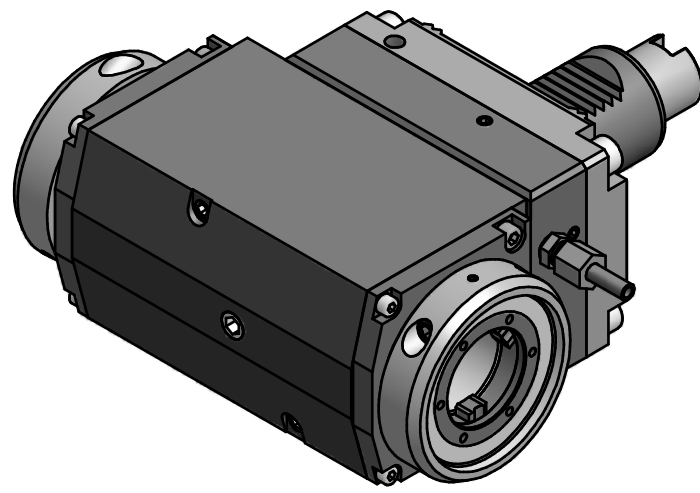
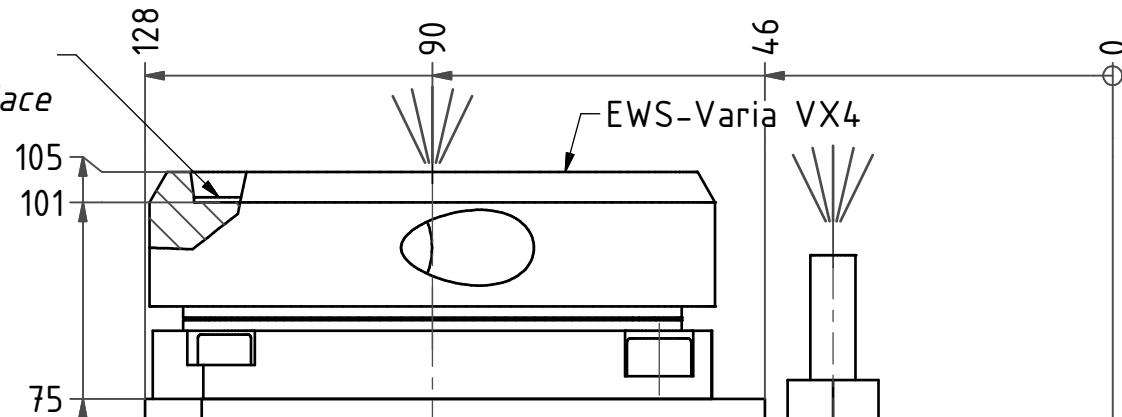
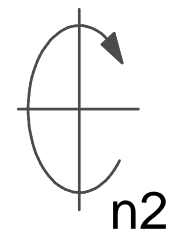
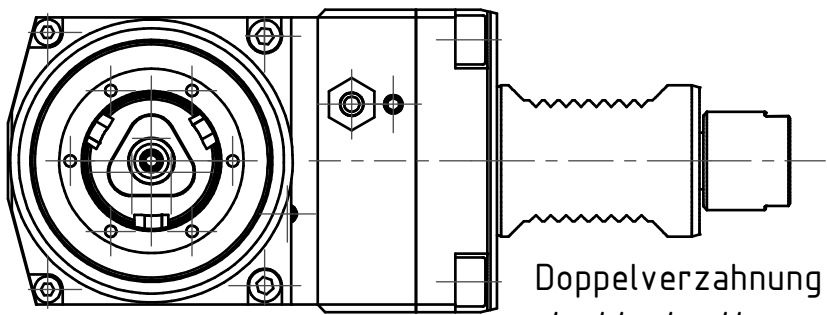
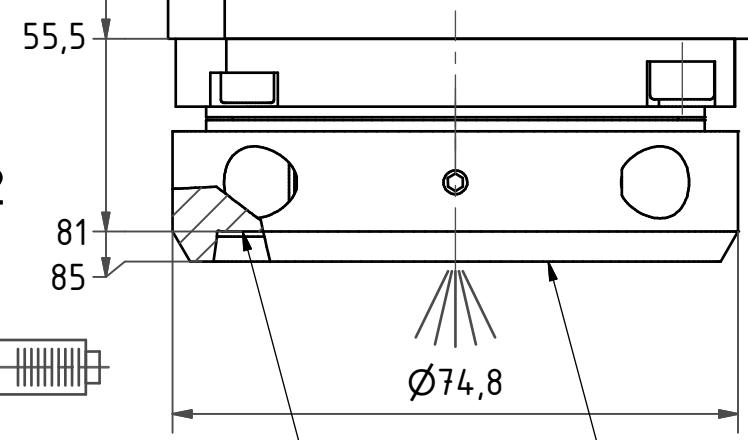
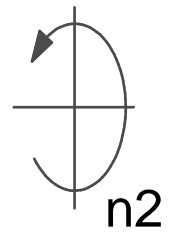


Anlagefläche
contact surface



W-Verzahnung Lizenz Index-Werke
W-tooth system licence Index-Corporation



Doppelverzahnung Lizenz Traub
double tooth system licence Traub

Anlagefläche
contact surface

Innen- und Aussenkuehlung / Inside and outside coolant supply
Kein Trockenlauf / No dry run
Kuehlmittelfiltrierung-50µ / coolant filtration-50µ

Copyright **EWS Tool Technologies**
Weitergabe und Vervielfaeltigung dieser Unterlage,
Verwertung und Mitteilung ihres Inhalts nicht
gestattet, soweit nicht ausdrecklich zugestanden.
Zuwiderhandlungen verpflichten zu Schadenersatz.

Bemerkung - Note
Nicht ohne Kuehlmittel betreiben!
Not for use without coolant-fluid!
Nicht für G250 YB-Revolver geeignet!
Not for use on G250 YB-turret!

Technische Daten - technical data
Weight = 10.135 [kg]
Torque max. (M1/M2) = 50 / 50 each Sp. [Nm]
Speed max. (n1/n2) = 6000 / 6000 [1/min]
Gear ratio (i)=n1:n2 = 1:1
Pressure (pmax) = 25 [bar]

Benennung - Title
Radial Bohr und Fräskopf
Radial drilling and milling head

EWS Tool Technologies
EWS Weigle GmbH & Co. KG
Maybachstr. 1
D-73066 Uthingen
www.ews-tools.de
Nr. - No.
60.40VX4DG250RLIKW

Technische Aenderungen vorbehalten!
Subject to technical modifications!
IDENT: D-EWS-144225
REV: -/-
MNR.
161821

