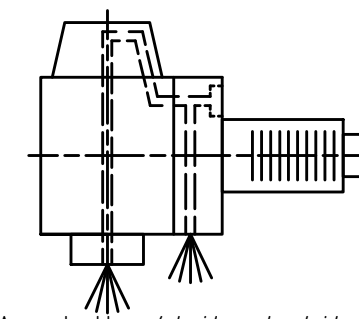
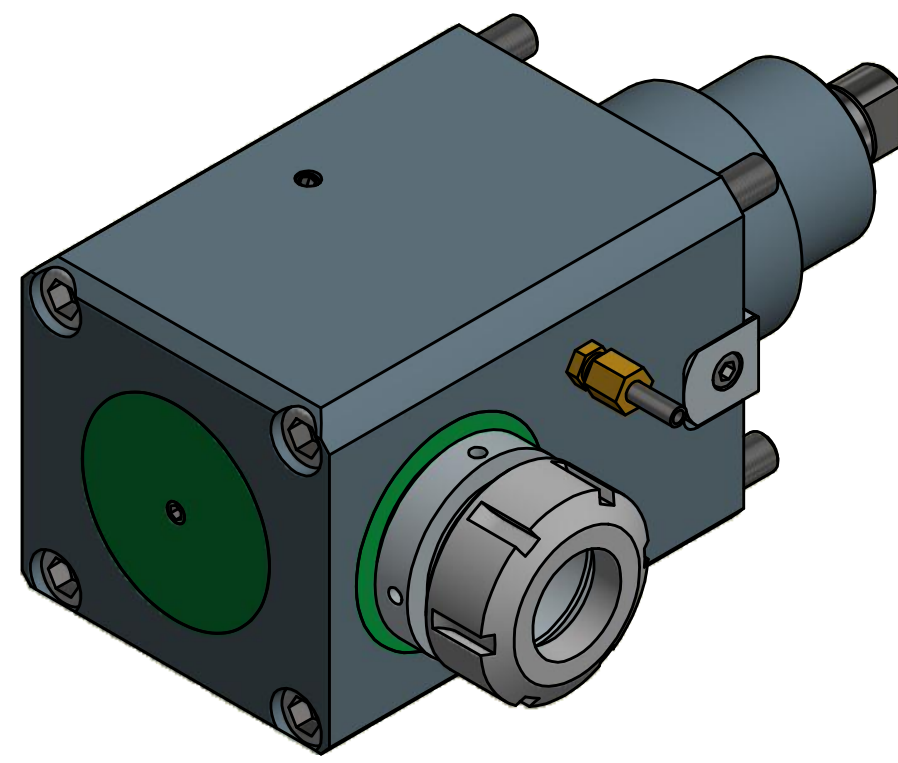
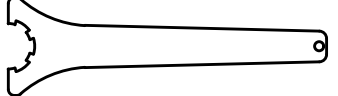


Spannzange / collet ER40 DIN6499
 Spannungsbereich / clamping range: 3,0 - 26,0


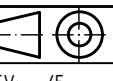


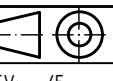


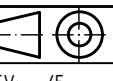


Innen- und Aussenkuehlung / Inside and outside coolant supply
 Kuehlmittelfiltrierung=50µ / coolant filtration=50µ


 Hakenschlüssel
 mit Zapfen
 Hook wrench
 with fixed pin
 DIN1810 B 58x62


 Spannzangenschlüssel
 Clamping wrench
 240

Copyright **EWS Tool Technologies**
 Weitergabe und Vervielfaeltigung dieser Unterlage,
 Verwertung und Mitteilung ihres Inhalts nicht
 gestattet, soweit nicht ausdrecklich zugestanden.
 Zuwiderhandlungen verpflichten zu Schadenersatz.

Bemerkung - Note Für Trockenlauf geeignet! Use without coolant fluid allowed!	Technische Daten - technical data Weight = 16.168 [kg] Torque max. (M1/M2) = 80 / 80 [Nm] Speed max. (n1/n2) = 4000 / 4000 [1/min] Gear ratio (i)=n1:n2 = 1:1 Pressure (pmax) = 70 [bar]	Benennung - Title Radial Bohr und Fräskopf Radial drilling and milling head	<table border="1"> <tr> <td data-bbox="2240 1911 2463 1984">  EWS Weigle GmbH & Co. KG Maybachstr. 1 D-73066 Ulm/ingen www.ews-tool.de </td> <td data-bbox="2463 1911 2700 1984"> Technische Aenderungen vorbehalten! Subject to technical modifications! IDENT: DEWS043346 </td> <td data-bbox="2700 1911 2923 1984">  REV: -/E MNR. </td> </tr> <tr> <td data-bbox="2240 1984 2463 2047"> Nr. - No. 60.754.01809IKDGLX110 </td> <td data-bbox="2463 1984 2700 2047"> 129615 </td> <td data-bbox="2700 1984 2923 2047">  </td> </tr> </table>	 EWS Weigle GmbH & Co. KG Maybachstr. 1 D-73066 Ulm/ingen www.ews-tool.de	Technische Aenderungen vorbehalten! Subject to technical modifications! IDENT: DEWS043346	 REV: -/E MNR.	Nr. - No. 60.754.01809IKDGLX110	129615	
 EWS Weigle GmbH & Co. KG Maybachstr. 1 D-73066 Ulm/ingen www.ews-tool.de	Technische Aenderungen vorbehalten! Subject to technical modifications! IDENT: DEWS043346	 REV: -/E MNR.							
Nr. - No. 60.754.01809IKDGLX110	129615	