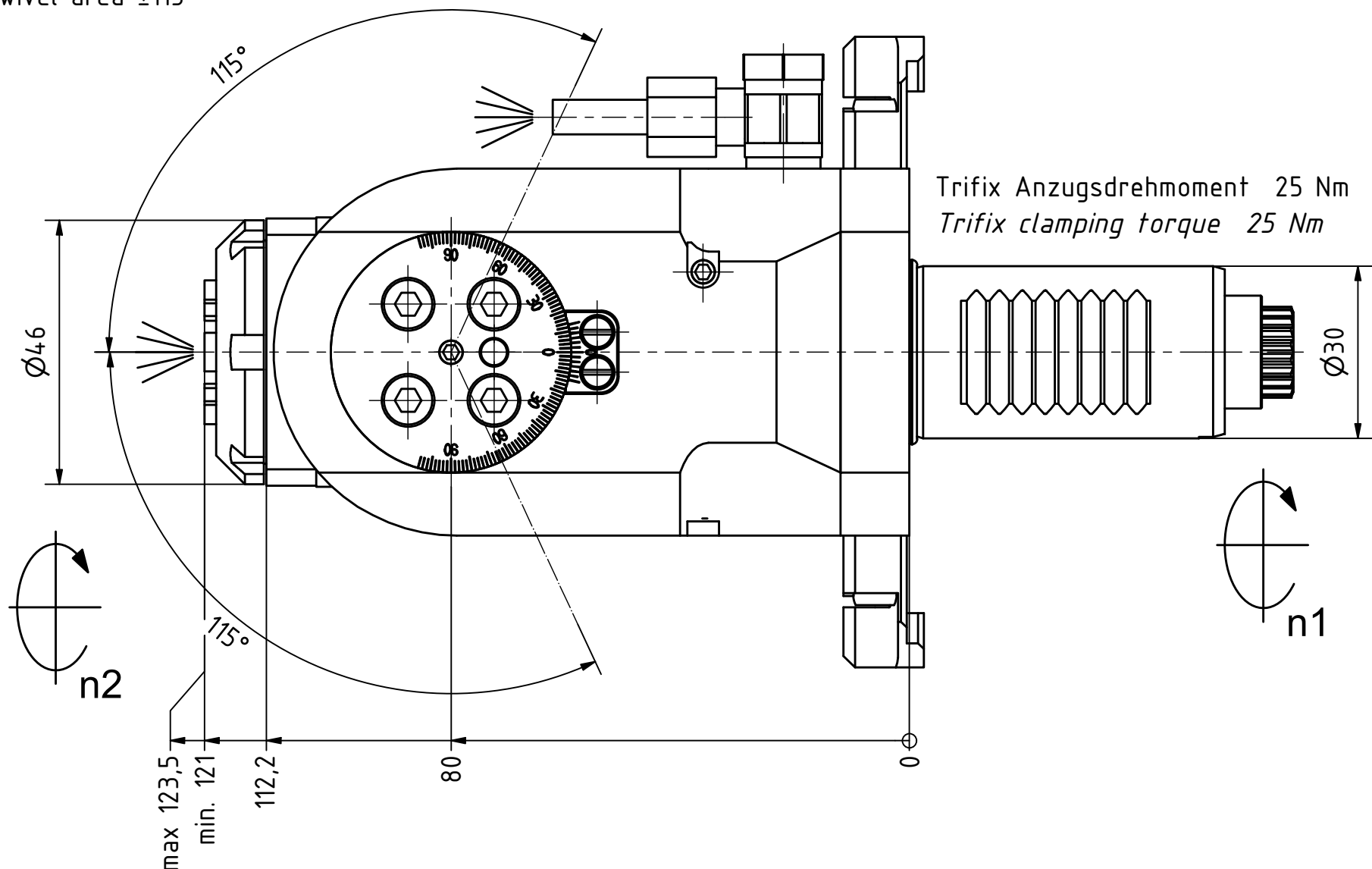
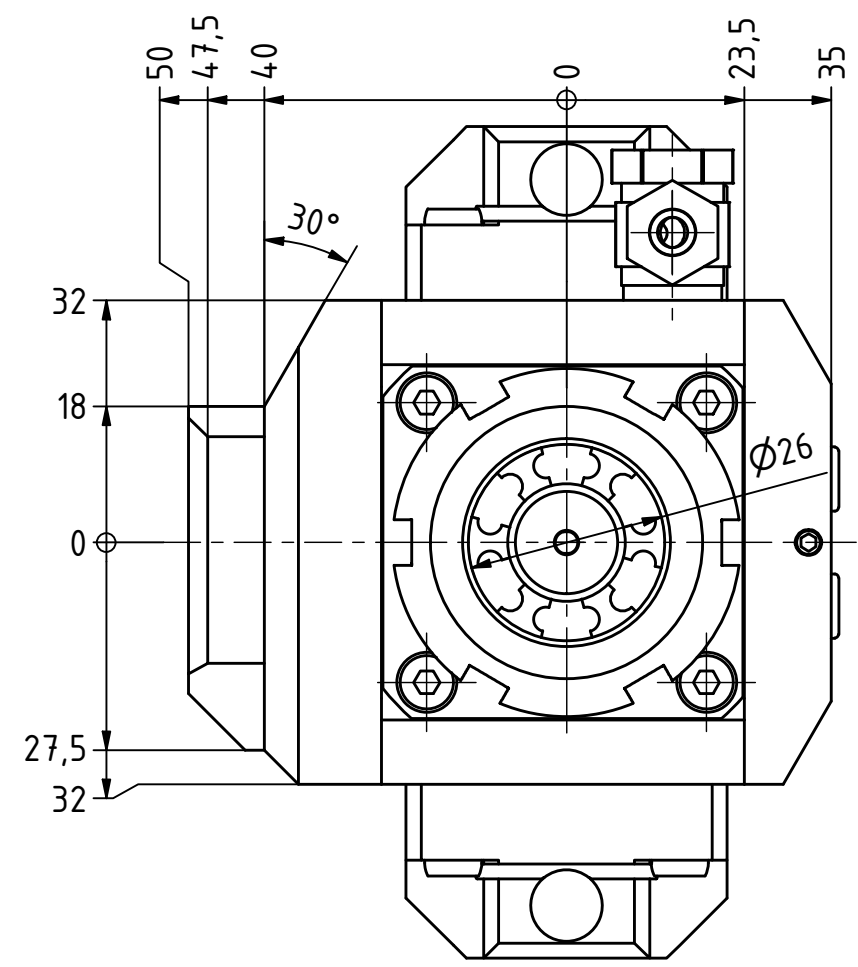


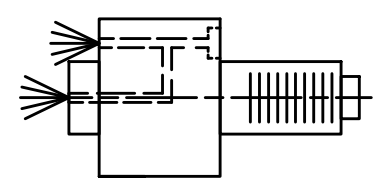
Schwenkbereich $\pm 115^\circ$
Swivel area $\pm 115^\circ$



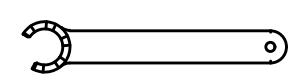
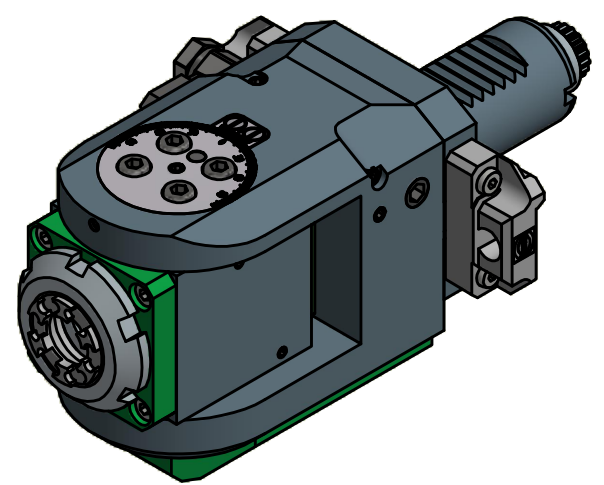
Trifix Anzugsdrehmoment 25 Nm
Trifix clamping torque 25 Nm



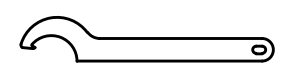
Spannzange / collet ER20 DIN6499
Spannbereich / clamping range: 1,0 - 13,0



Innen- und Aussenkuehlung / Inside and outside coolant supply
Kuehlmittelfiltrierung 50μ / coolant filtration 50μ



Spannzangenschlüssel für innenliegende Mutter
Clamping wrench for internal collet
220AX



Hakenschlüssel mit Nase
Hook wrench with nose end
DIN1810 A 45x50

Copyright **EWS Tool Technologies**
Weitergabe und Vervielfaeltigung dieser Unterlage, Verwertung und Mitteilung ihres Inhalts nicht gestattet, soweit nicht ausdrecklich zugestanden. Zuwiderhandlungen verpflichten zu Schadenersatz.

Bemerkung - Note
Für Trockenlauf geeignet!
Use without coolant fluid allowed!

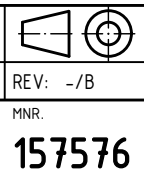
Technische Daten - technical data	
Weight	= 3.728 [kg]
Torque max. (M1/M2)	= 16 / 16 [Nm]
Speed max. (n1/n2)	= 8000 / 8000 [1/min]
Gear ratio (i)=n1:n2	= 1:1
Pressure (pmax)	= 70 [bar]

Benennung - Title
Schwenkkopf
Swivel head

EWS Tool Technologies
EWS Weigle GmbH & Co. KG
Maybachstr. 1
D-73066 UHINGEN
www.ews-tools.de

Nr. - No.
63.3020CTXIKDTFIM

Technische Aenderungen vorbehalten!
Subject to technical modifications!
IDENT: D-EWS-188845
REV: -/B
MNR.
157576



QR