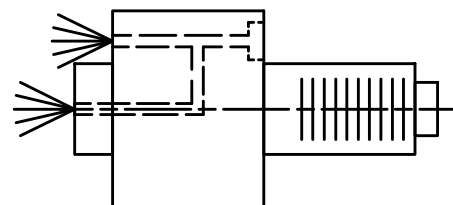





Clamping torque : 35Nm.



Bemerkung - Note Nicht ohne Kuehlmittel betreiben! Not for use without coolant-fluid!	Technische Daten - technical data Weight = 3.321 [kg] Torque max. (M1/M2) = 25 / 25 [Nm] Speed max. (n1/n2) = 8000 / 8000 [1/min] Gear ratio (i)=n1:n2 = 1:1 Pressure (pmax) = 25 [bar]	Benennung - Title Axial Bohr und Fräskopf Axial drilling and milling head	<table border="1"> <tr> <td data-bbox="2050 1845 2279 1854">  </td> <td data-bbox="2279 1845 2561 1854"> EWS Weigele GmbH & Co. KG Maybachstr. 1 D-73066 Utingen www.ews-tools.de </td> <td data-bbox="2561 1845 2846 1854"> Technische Aenderungen vorbehalten! Subject to technical modifications! </td> <td data-bbox="2846 1845 2875 1854">  </td> </tr> <tr> <td colspan="2" data-bbox="2050 1854 2561 1860"> IDENT: DEWS041365 </td> <td colspan="2" data-bbox="2561 1854 2846 1860"> REV: -/C </td> </tr> <tr> <td colspan="2" data-bbox="2050 1860 2561 1860"> Nr. - No. </td> <td colspan="2" data-bbox="2561 1860 2846 1860"> MNR. </td> </tr> <tr> <td colspan="2" data-bbox="2050 1860 2561 1860"> 40.30C3G300IK </td> <td colspan="2" data-bbox="2561 1860 2846 1860"> 127250 </td> </tr> </table> <div data-bbox="2760 1860 2875 1860" style="font-size: 40px; text-align: center;">QR</div>		EWS Weigele GmbH & Co. KG Maybachstr. 1 D-73066 Utingen www.ews-tools.de	Technische Aenderungen vorbehalten! Subject to technical modifications!		IDENT: DEWS041365		REV: -/C		Nr. - No.		MNR.		40.30C3G300IK		127250	
	EWS Weigele GmbH & Co. KG Maybachstr. 1 D-73066 Utingen www.ews-tools.de	Technische Aenderungen vorbehalten! Subject to technical modifications!																	
IDENT: DEWS041365		REV: -/C																	
Nr. - No.		MNR.																	
40.30C3G300IK		127250																	