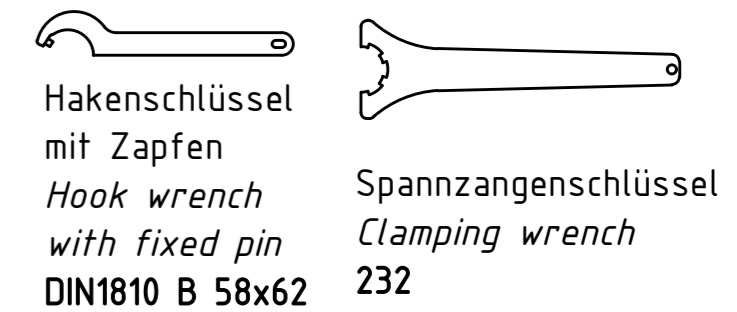
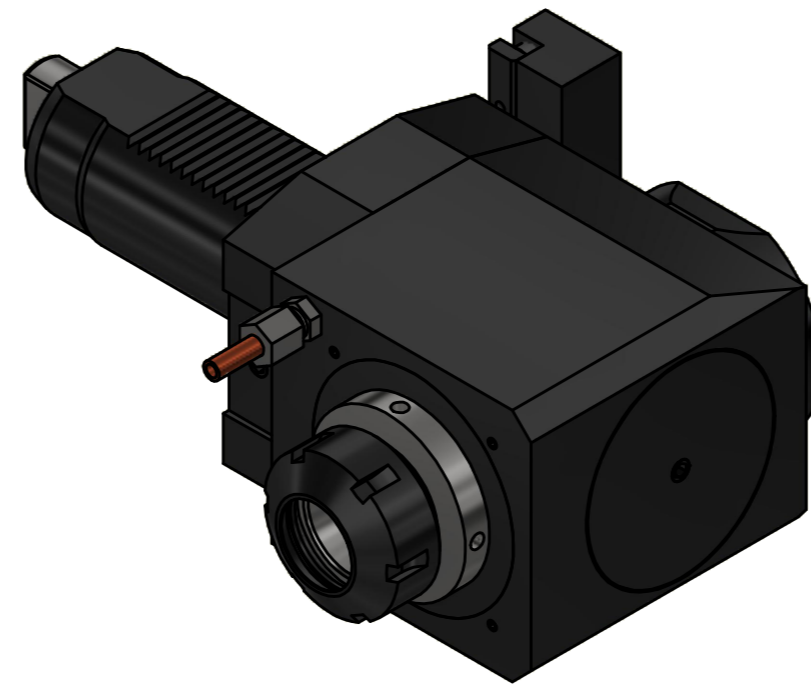
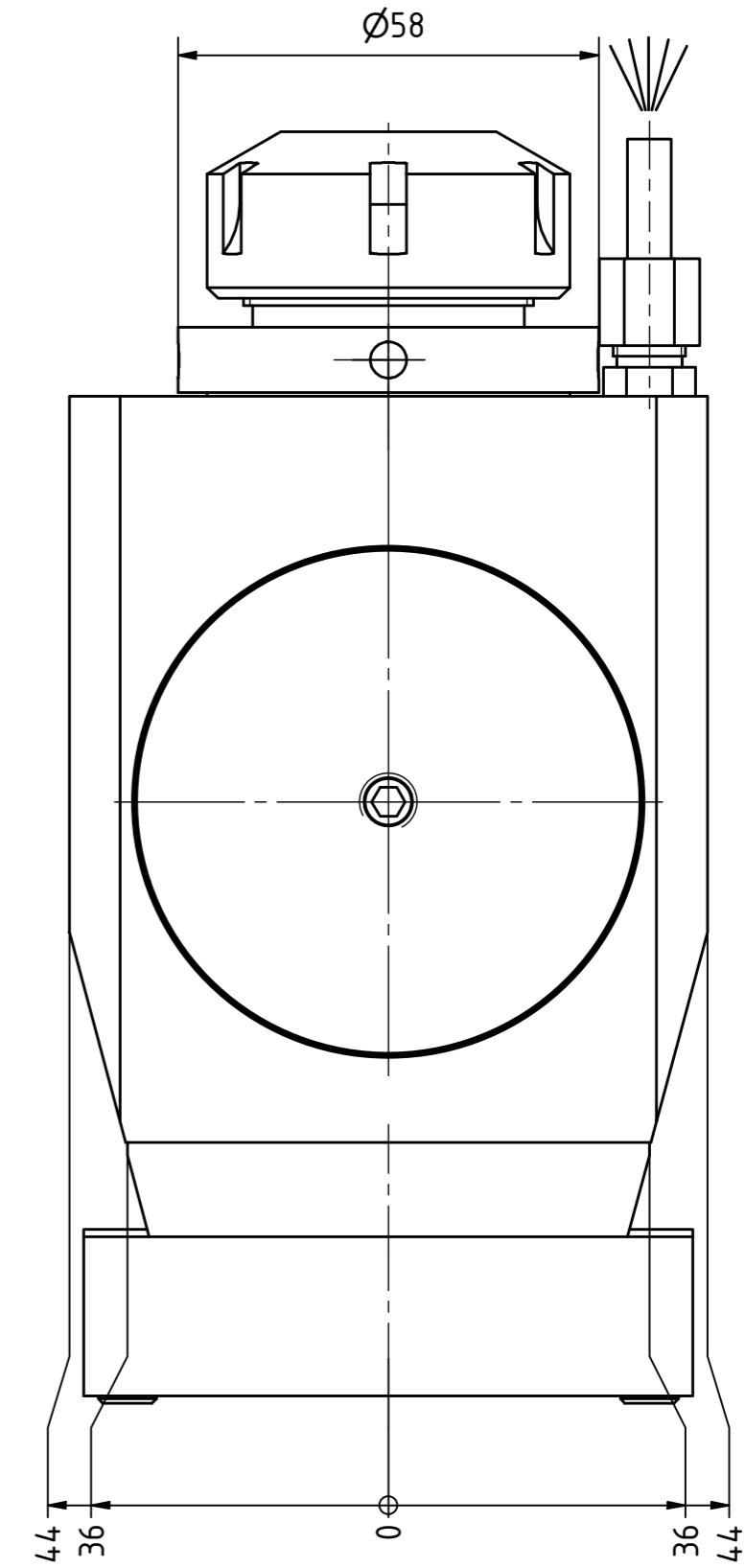
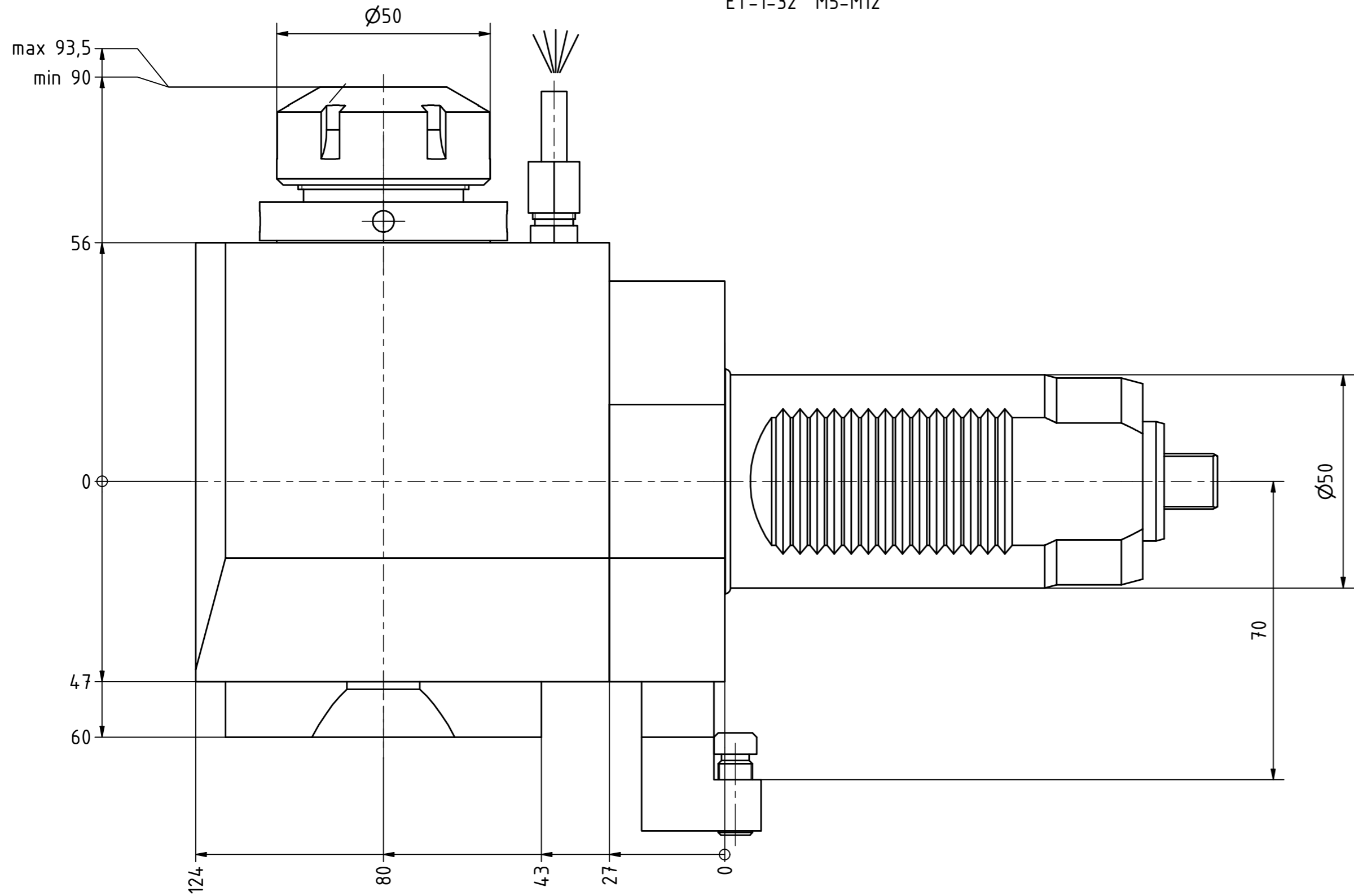

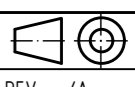
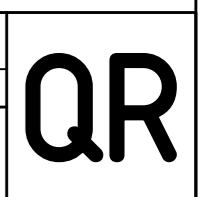


Spannzange / *collet* ER32 DIN6499  
 Spannbereich / *clamping range*: 2,0 - 20,0

Gewindebohrzange / *tapping collet*  
 ET-1-32 M5-M12



Copyright **EWS Tool Technologies**  
 Weitergabe und Vervielfältigung dieser Unterlage,  
 Verwertung und Mitteilung ihres Inhalts nicht  
 gestattet, soweit nicht ausdrücklich zugestanden.  
 Zuwiderhandlungen verpflichten zu Schadenersatz.

Bemerkung - <i>Note</i>	Technische Daten - <i>technical data</i> <b>Weight</b> = 9,132 [kg] <b>Torque max.</b> (M1/M2) = 100 / 100 [Nm] <b>Speed max.</b> (n1/n2) = 4.000 / 4.000 [1/min] <b>Gear ratio</b> (i)=n1:n2 = 1:1	Benennung - <i>Title</i> <b>Radial Bohr und Fräskopf</b> <b>Radial drilling and milling head</b>	 EWS Weigle GmbH & Co. KG Maybachstr. 1 D-73066 Uhingen www.ews-tools.de	Technische Änderungen vorbehalten! <i>Subject to technical modifications!</i> IDENT: DEWS14.7328 Nr. - <i>No.</i> <b>60.5032VL5L</b>	 REV: -/A MNR. <b>122950</b>	
-------------------------	---	--	---	--	--	---