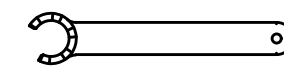
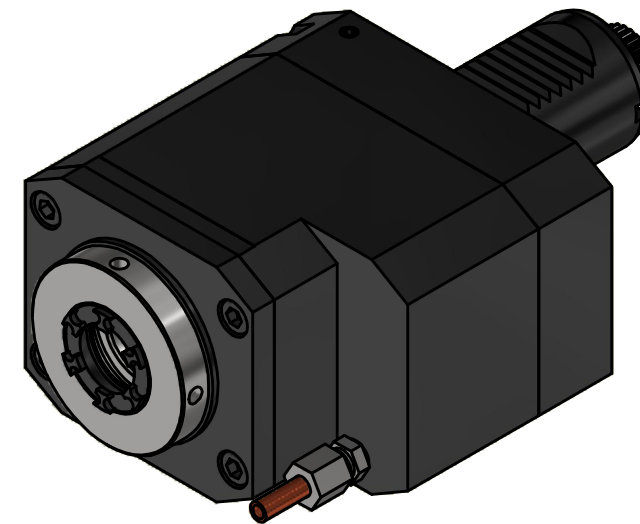
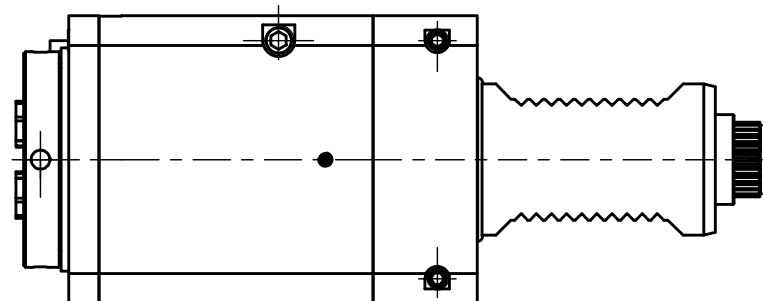
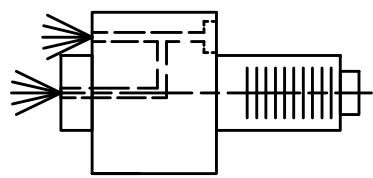
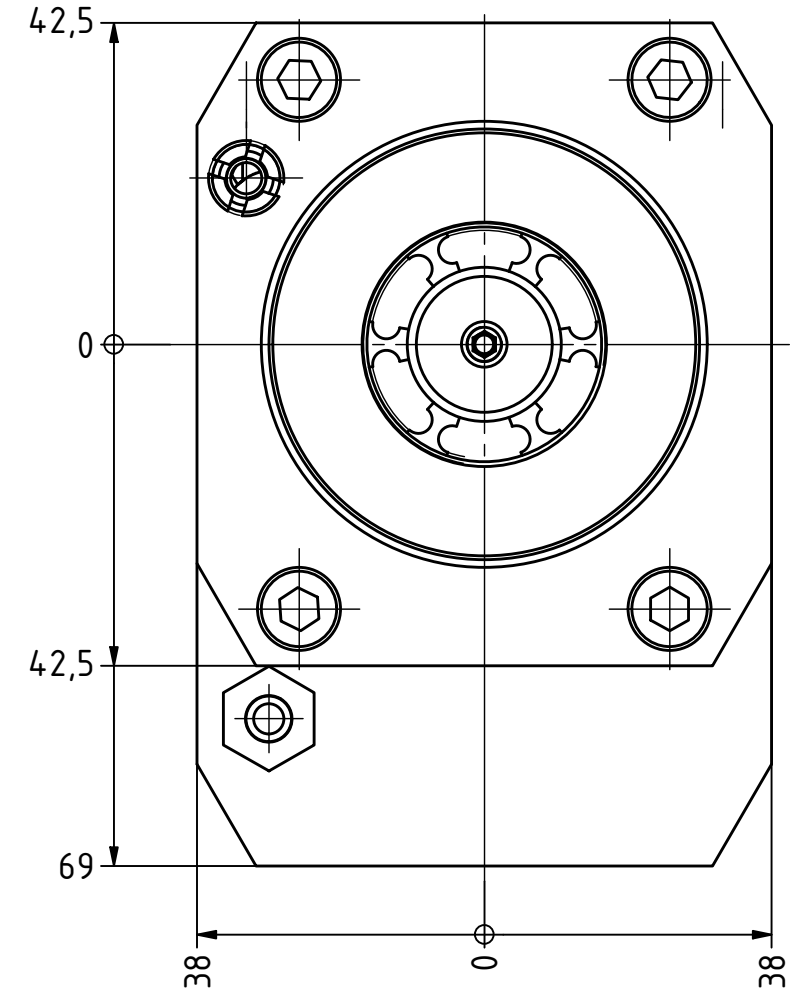
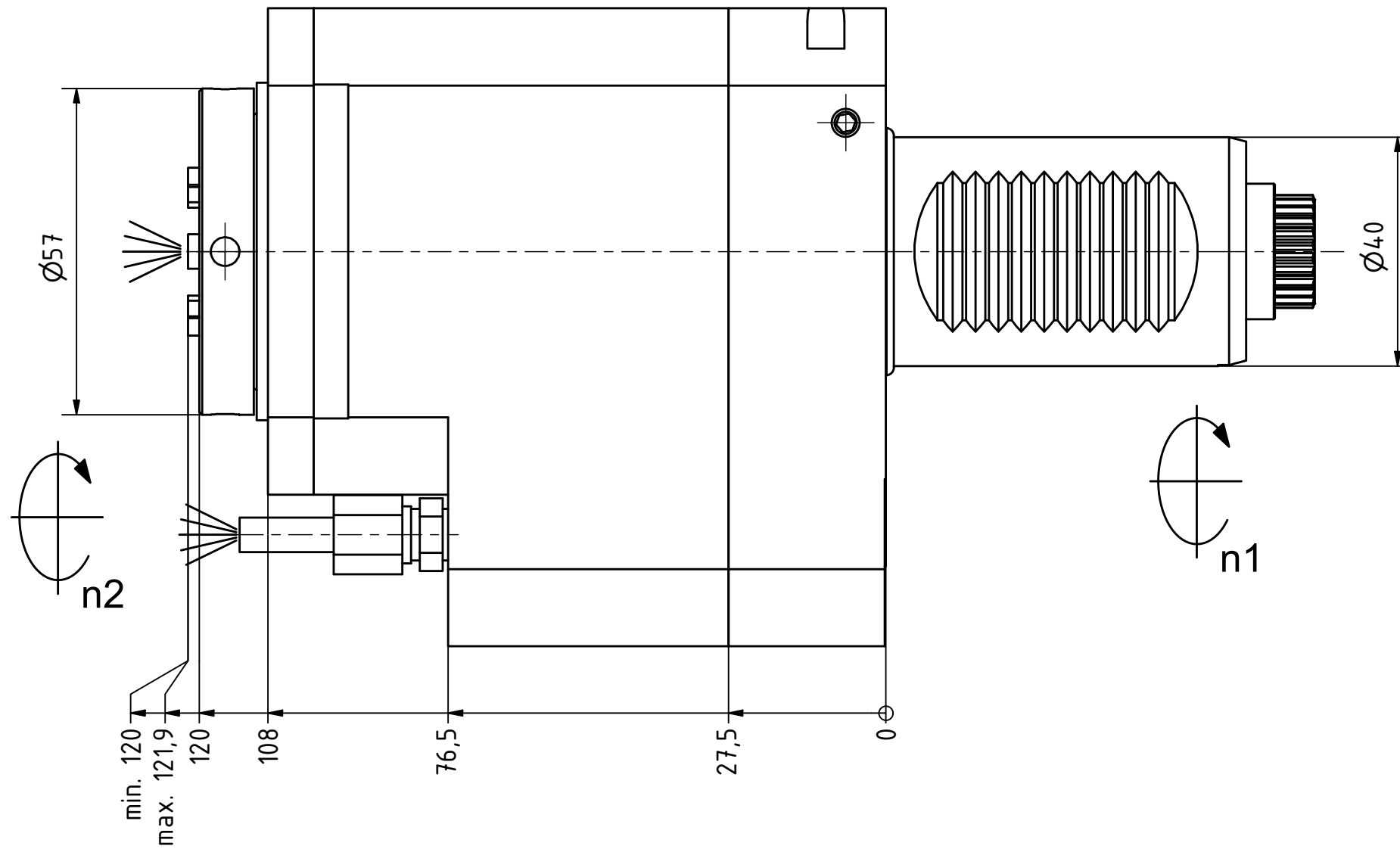
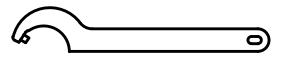


Spannzange / collet ER25 DIN6499
 Spannbereich / clamping range: 1,0 - 16,0



Spannzangenschlüssel für innenliegende Mutter
 Clamping wrench for internal collet
 225AX



Hakenschlüssel mit Zapfen
 Hook wrench with fixed pin
 DIN1810 B 58x62

Innen- und Aussenkuehlung / Inside and outside coolant supply
 Kein Trockenlauf / No dry run
 Kuehlmittelfiltrierung <math>< 50\mu</math> / coolant filtration <math>< 50\mu</math>

Doppelverzahnung Lizenz Traub
 double tooth system licence Traub

Copyright **EWS Tool Technologies**
 Weitergabe und Vervielfaeltigung dieser Unterlage, Verwertung und Mitteilung ihres Inhalts nicht gestattet, soweit nicht ausdrecklich zugestanden. Zuwiderhandlungen verpflichten zu Schadenersatz.

Bemerkung - Note
 Nicht ohne Kuehlmittel betreiben!
 Not for use without coolant-fluid!

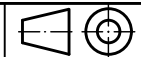
Technische Daten - technical data	
Weight	= 6.498 [kg]
Torque max. (M1/M2)	= 45 / 15 [Nm]
Speed max. (n1/n2)	= 5000 / 15000 [1/min]
Gear ratio (i)=n1:n2	= 1:3
Pressure (pmax)	= 70 [bar]

Benennung - Title
Axial Bohr und Fräskopf
Axial drilling and milling head



Nr. - No.
40.4025CTXRLIKI13GLIM

Technische Aenderungen vorbehalten!
 Subject to technical modifications!
 IDENT: DEWS234426



REV: -/C
 MNR.

122146

