

Spannzange / collet ER32 DIN6499
Spannbereich / clamping range: 2,0 - 20,0

max. 84
min. 80,5

48

39

0

39

72

128

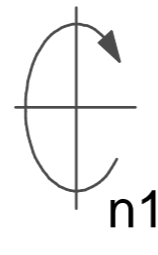
90

53,5

46

0

12



n1

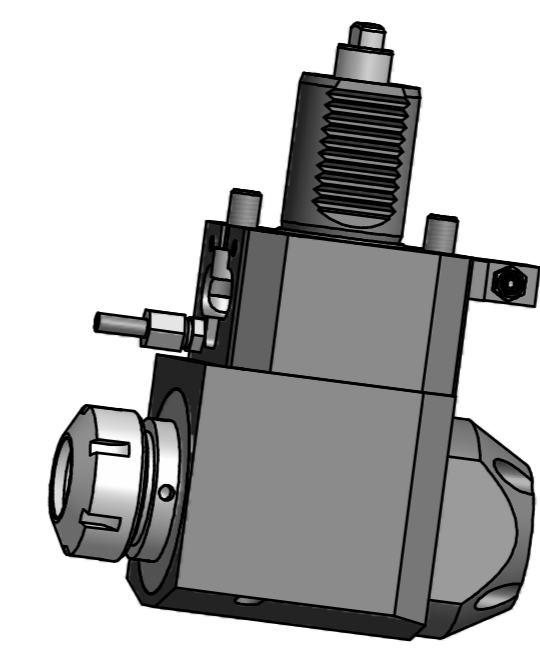
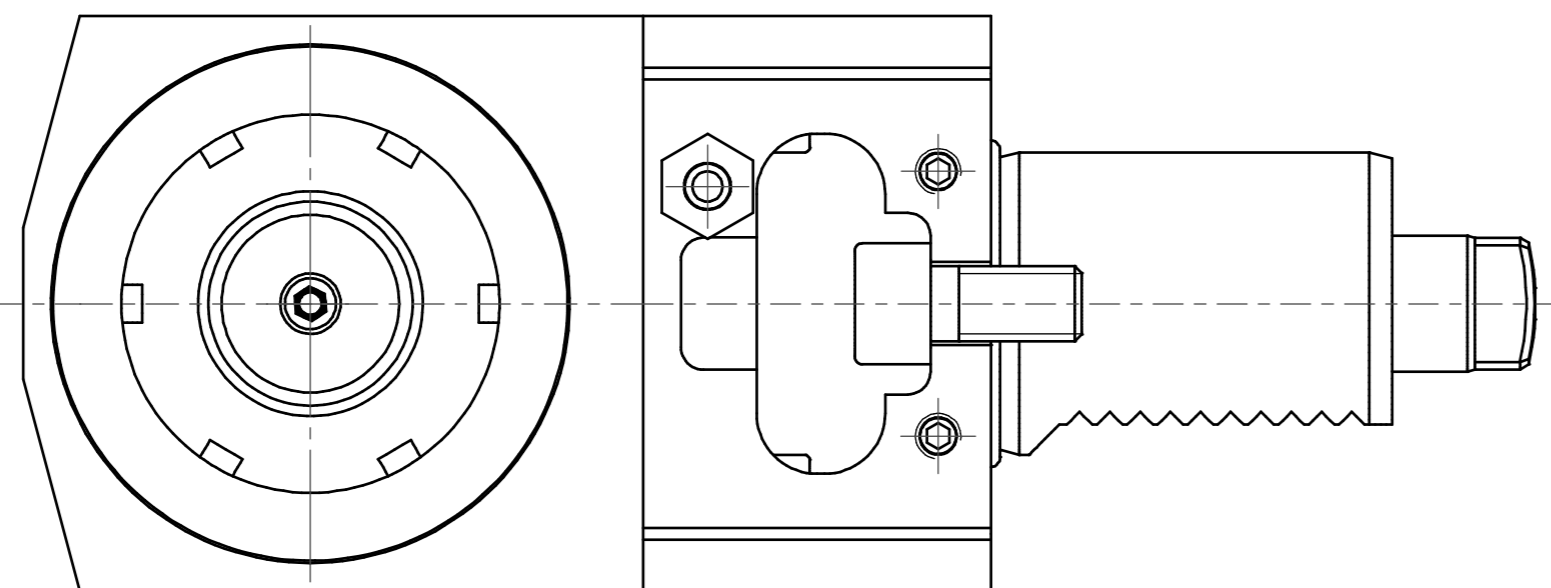
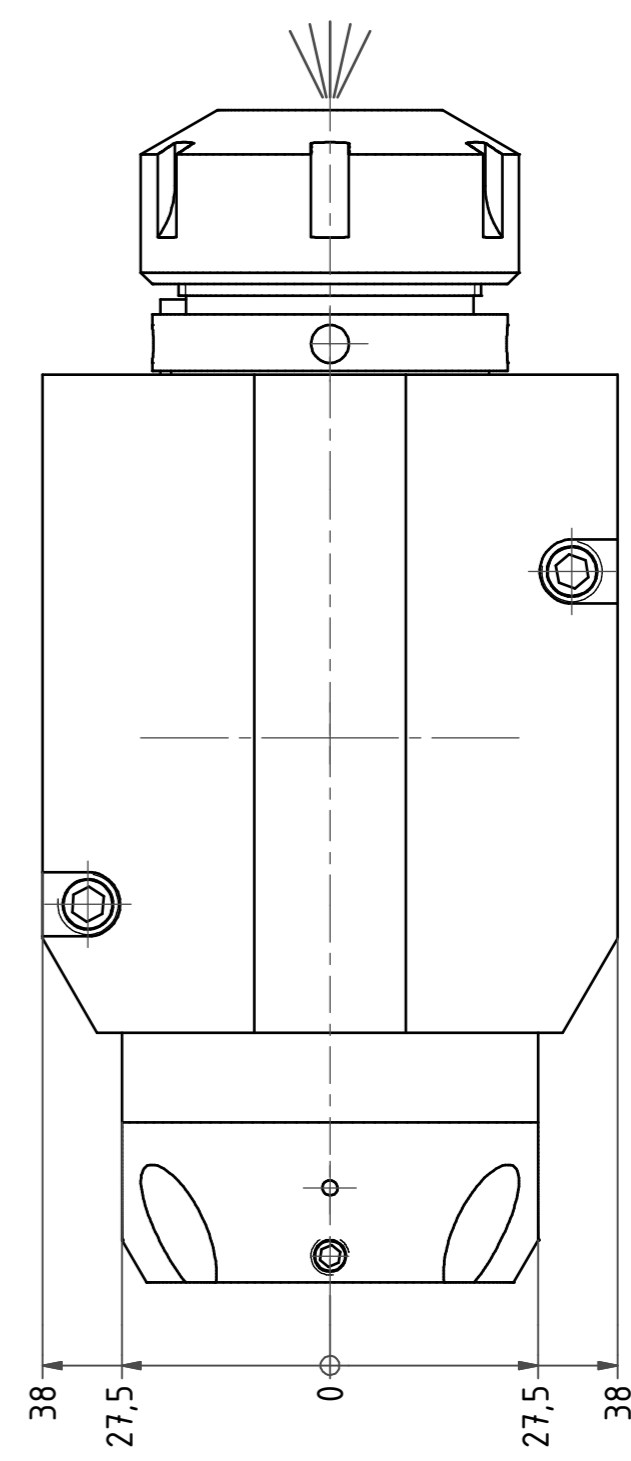
33,5

33,5

56

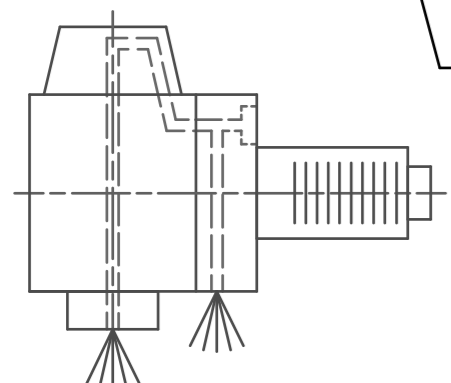
Ø4,0

M10 (2x)



Hakenschlüssel
mit Zapfen
Hook wrench
with fixed pin
DIN1810 B 45x50

Spannzangenschlüssel
Clamping wrench
232



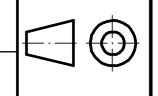
Innen- und Aussenkuehlung / Inside and outside coolant supply
Kein Trockenlauf / No dry run
Kuehlmittelfiltrierung=50µ / coolant filtration=50µ

Bemerkung - Note
Nicht ohne Kuehlmittel betreiben!
Not for use without coolant-fluid!

Technische Daten - Technical data
M1 / M2 = 50 / 50 Nm
n1 / n2 = 6000 / 6000 1/min
i (N1:N2) = 1:1
Dmax = 70 bar

Benennung - Title
Radial Bohr und Fräskopf
Radial drilling and milling head

name	date	Technische Änderungen vorbehalten! Subject to technical modifications!
drawing Schmid	23.09.2010	
EWS EWS Wägete GmbH & Co. KG Maybachstr. 1 D-72066 Ehingen Tel. +49(0)716193040-100		Nr. 60.40321809LIK-VSX90
MNR: 151346		IDENT: D-EWS-093906 - Blatt - page 1 (1)



DIN A2