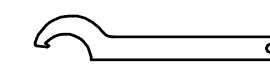
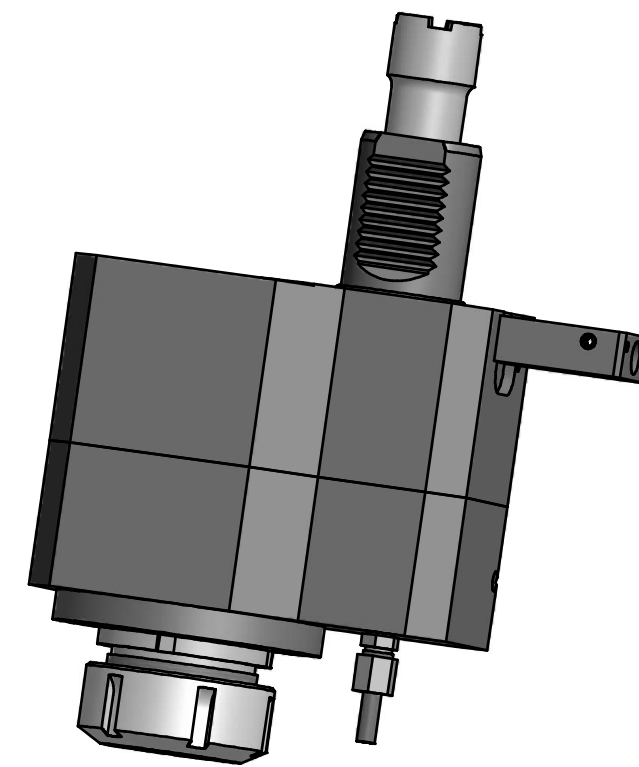
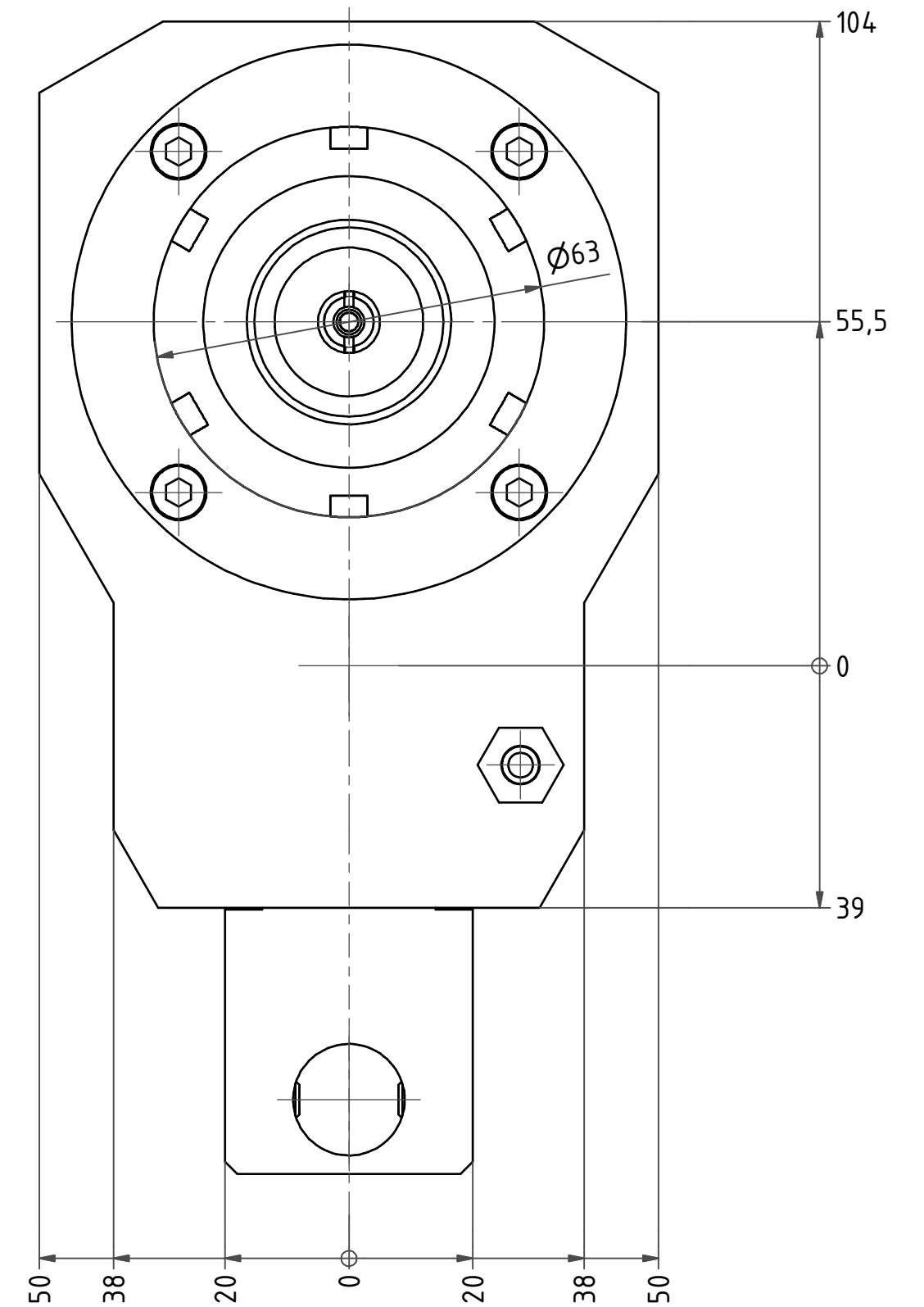
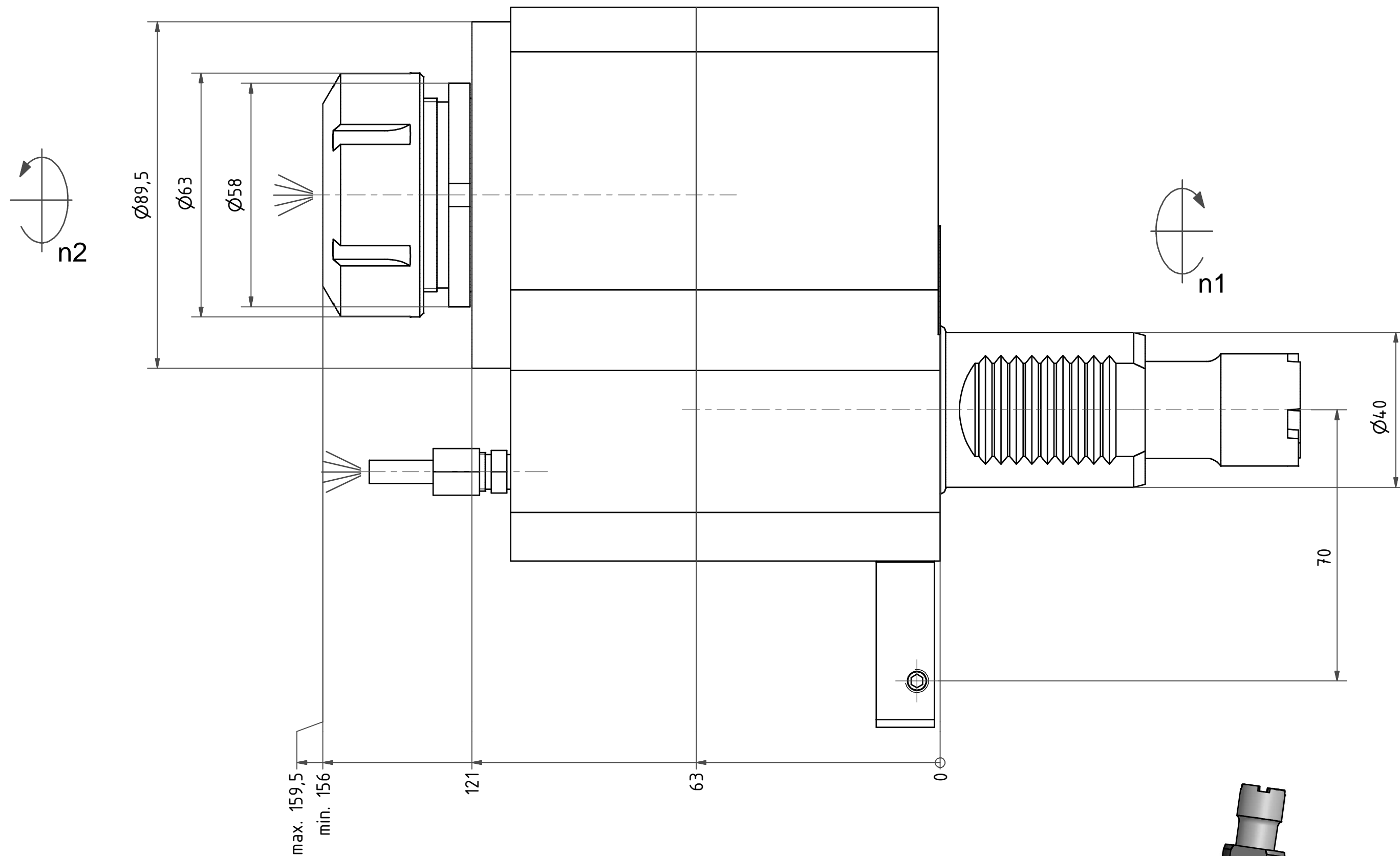


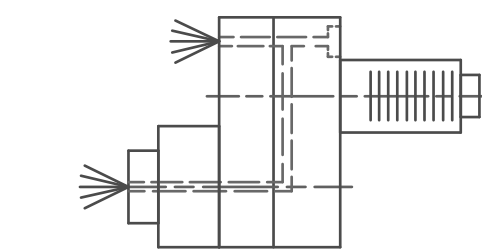
Spannzange / collet ER40 DIN6499
 Spannbereich / clamping range: 3,0 - 26,0



Hakenschlüssel
 mit Nase
 Hook wrench with
 nose end
 DIN1810 A 58x62



Spannzangenschlüssel
 Clamping wrench
 240



Innen- und Aussenkuehlung / Inside and outside coolant supply
 Kein Trockenlauf / No dry run
 Kuehlmittelfiltrierung=50µ / coolant filtration=50µ

Bemerkung - Note
 Nicht ohne Kuehlmittel betreiben!
 Not for use without coolant-fluid!

Technische Daten - Technical data
 M1 / M2 = 40 / 120 Nm
 n1 / n2 = 6000 / 2000 1/min
 i (N1:N2) = 2,895:1
 Pmax = 70 bar

Benennung - Title
 Axial Bohr u. Fräskopf achsversetzt
 Ax. drill. and mill. head offset

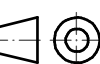
name	date
CAD	30.03.2007

EWS Weigle GmbH & Co. KG
 Maybachstr. 1
 D-70068 Uhlingen
 Tel. +49(0)7161/93040-10

Technische Aenderungen vorbehalten!
 Subject to technical modifications!

Nr. 50.4040LB15LIK13

File: 50.4040LB15LIK13_OUT.idw



DIN A2

Blatt - page 1 (1)