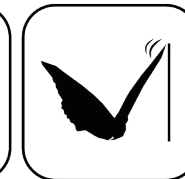
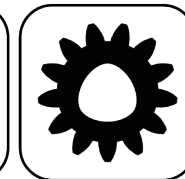




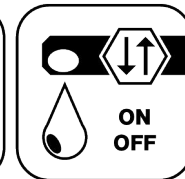
Ceramic Seal



Butterfly Seal



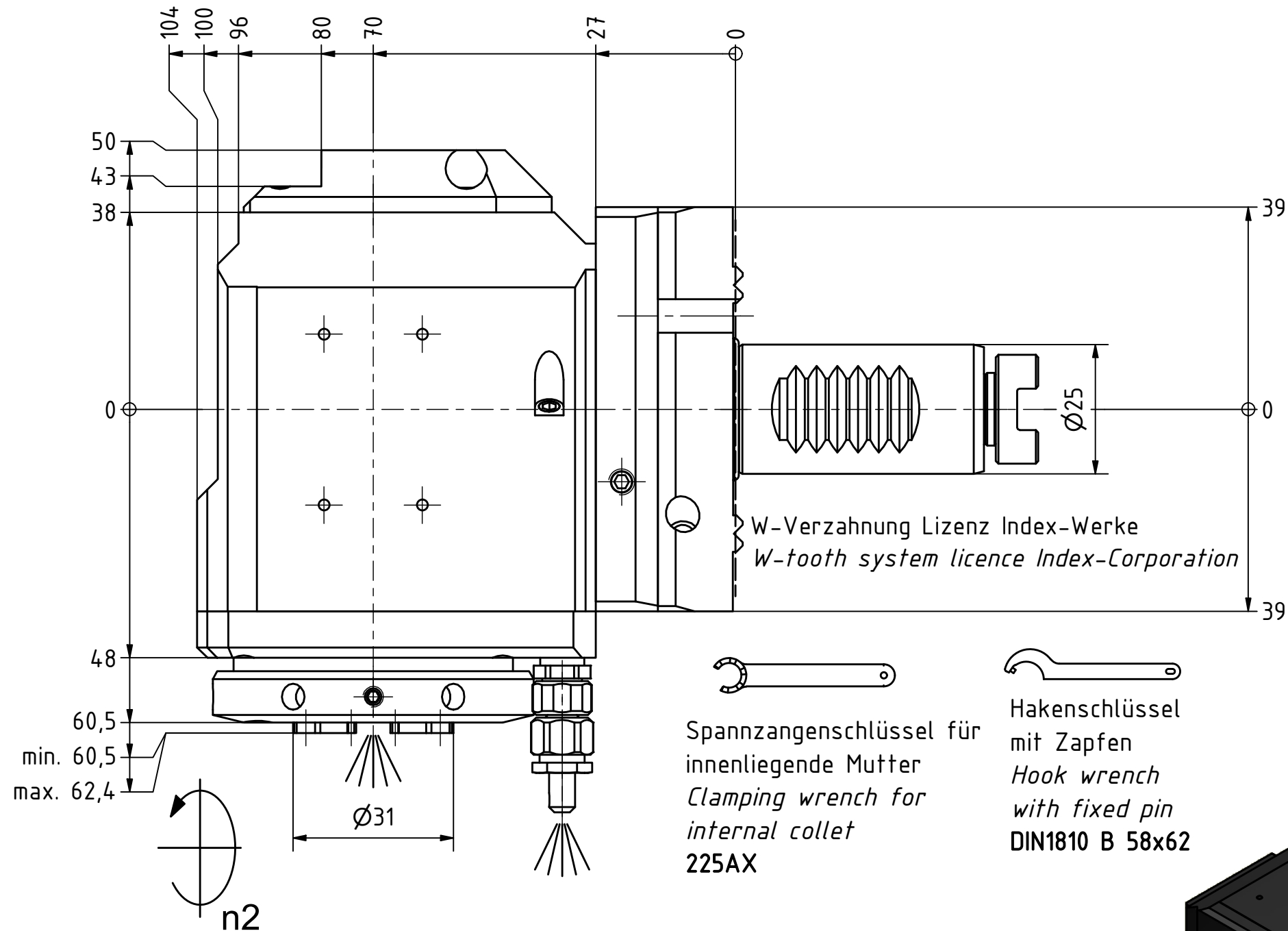
Polygon Joint



Coolant Management

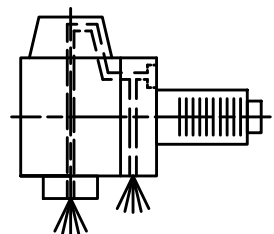
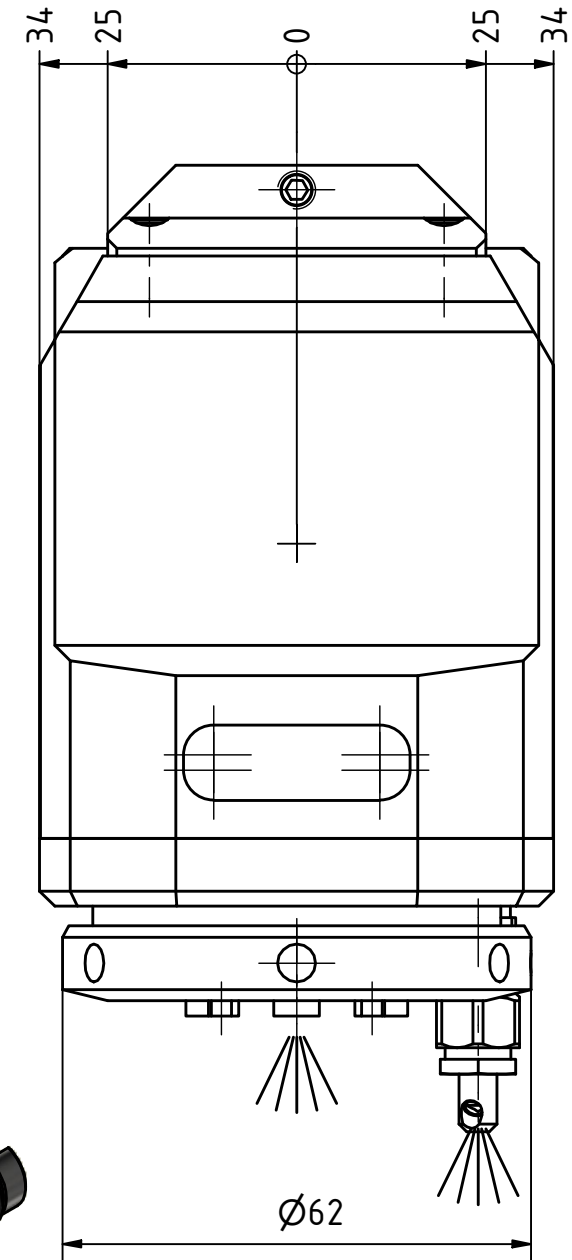


Tech Details

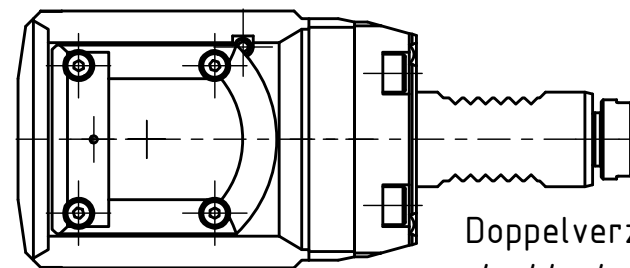


 Spannzangenschlüssel für innenliegende Mutter
Clamping wrench for internal collet
225AX

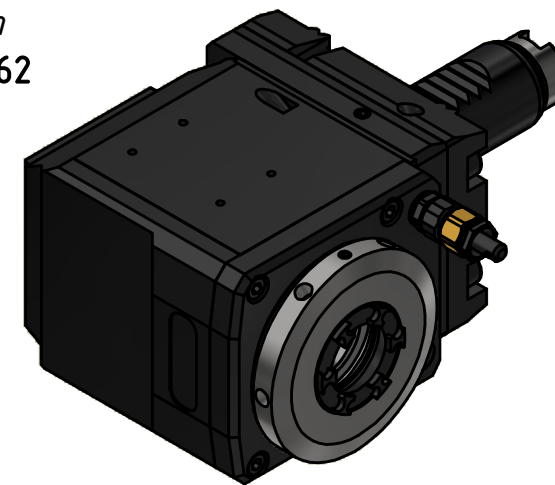
 Hakenschlüssel mit Zapfen
Hook wrench with fixed pin
DIN1810 B 58x62



Innen- und Aussenkuehlung / Inside and outside coolant supply
Kuehlmittelfiltrierung-50µ / coolant filtration-50µ



Doppelverzahnung Lizenz Traub
double tooth system licence Traub



Copyright **EWS Tool Technologies**
Weitergabe und Vervielfaeltigung dieser Unterlage,
Verwertung und Mitteilung ihres Inhalts nicht
gestattet, soweit nicht ausdrucklich zugestanden.
Zuwiderhandlungen verpflichten zu Schadenersatz.

Bemerkung - Note

Für Trockenlauf geeignet!
Use without coolant fluid allowed!
mit Kegelrollenlager
with taper roller bearing(s)

Technische Daten - technical data

Weight = 4.003 [kg]
Torque max. (M1/M2) = 20 / 40 [Nm]
Speed max. (n1/n2) = 8000 / 4000 [1/min]
Gear ratio (i)=n1:n2 = 2:1
Pressure (pmax) = 70 [bar]

Benennung - Title

Radial Bohr und Fräskopf
Radial drilling and milling head

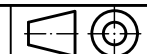


Nr. - No.

60.2525KRG200RLIKDI2WIM

Technische Aenderungen vorbehalten!
Subject to technical modifications!

IDENT: DEWS268544



REV: -/A

MNR.

233256

