




EWS.Varia




Butterfly Seal



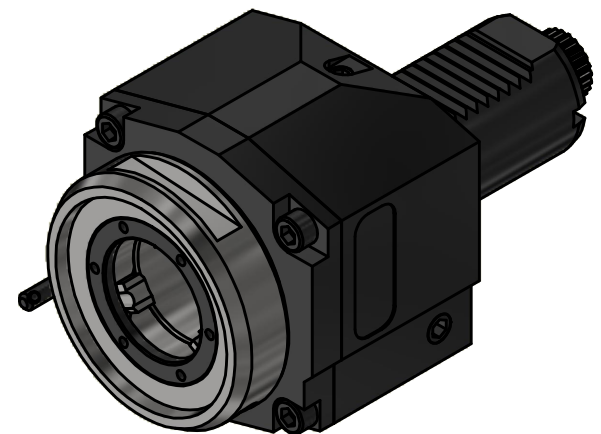
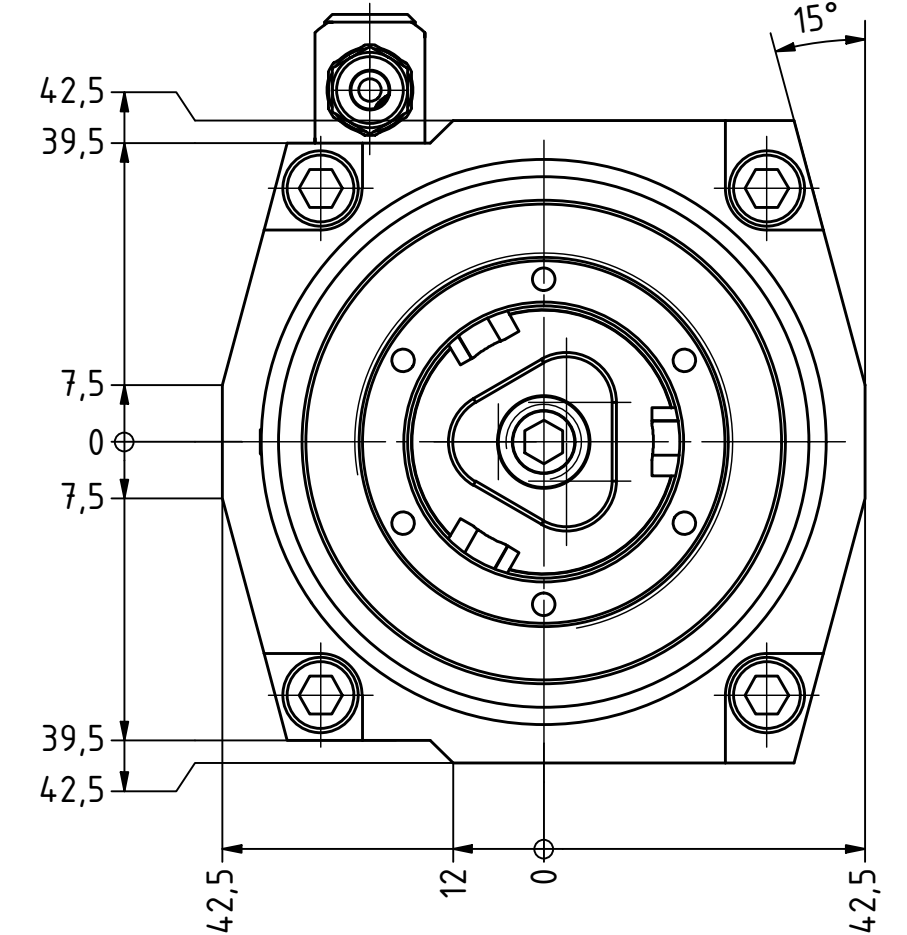
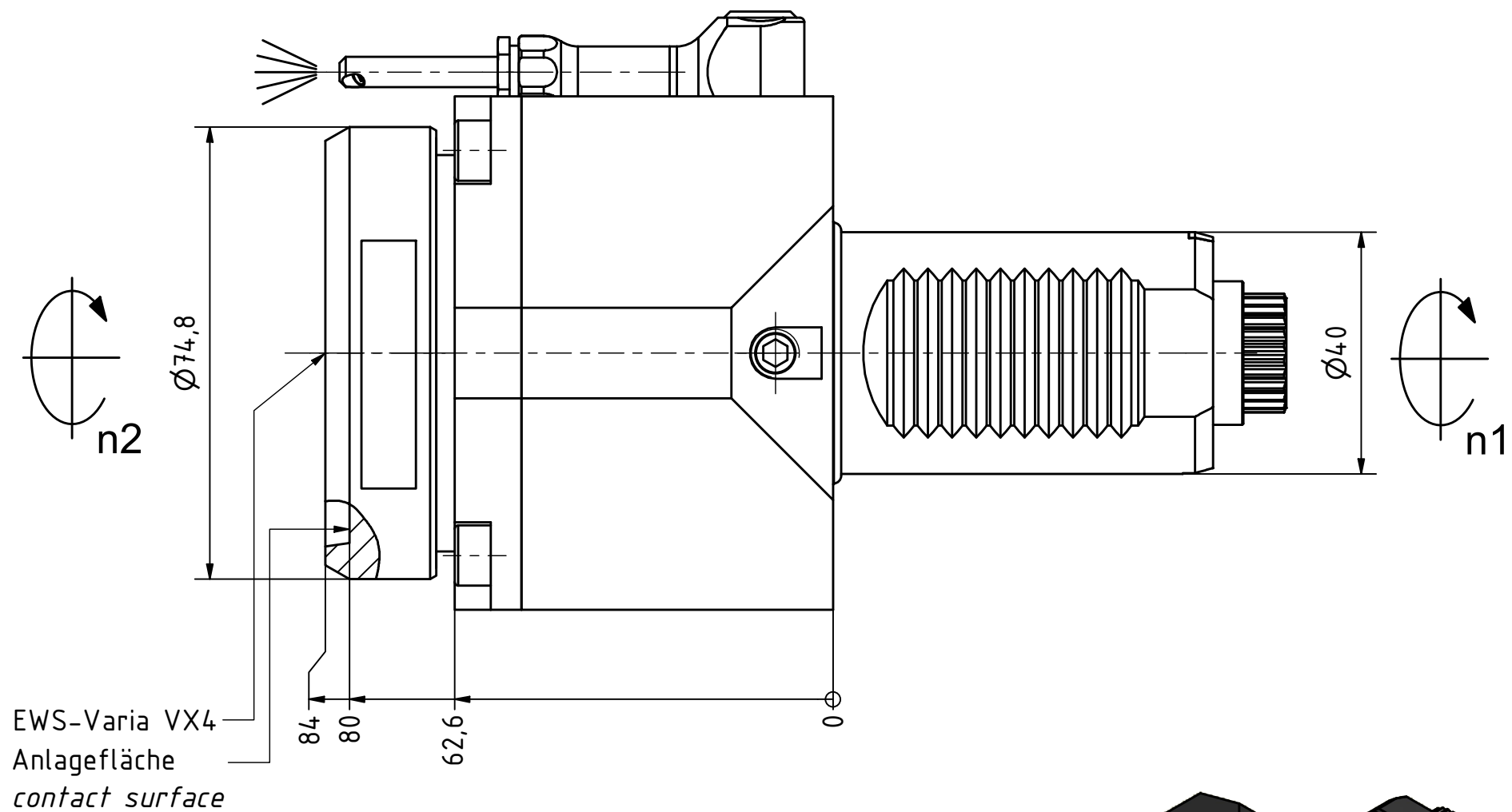
Highspeed
1/min






Coolant Management



Tech Details



Copyright **EWS Tool Technologies**
 Weitergabe und Vervielfaeltigung dieser Unterlage,
 Verwertung und Mitteilung ihres Inhalts nicht
 gestattet, soweit nicht ausdrecklich zugestanden.
 Zuwiderhandlungen verpflichten zu Schadenersatz.

Bemerkung - Note	Technische Daten - technical data Weight = 3.629 [kg] Torque max. (M1/M2) = 63 / 63 [Nm] Speed max. (n1/n2) = 12000 / 12000 [1/min] Gear ratio (i)=n1:n2 = 1:1	Benennung - Title Axial Bohr und Fräskopf Axial drilling and milling head	<div> <div>  <div> EWS Weigle GmbH & Co. KG Maybachstr. 1 D-73066 Uhingen www.ews-tools.de </div> </div> <div> Technische Aenderungen vorbehalten! Subject to technical modifications! IDENT: DEWS254675 </div> </div> <div> <div> Nr. - No. 40.40VX4CTXHSD12#01 </div> <div> MNR. 230668 </div> </div>	<div> <div>  </div> <div> REV: -/A </div> </div> <div> <div>  </div> </div>
------------------	--	---	---	---