



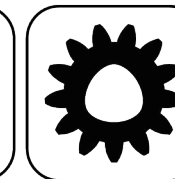
EWS.Varia



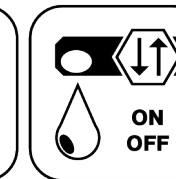
Ceramic Seal



Butterfly Seal



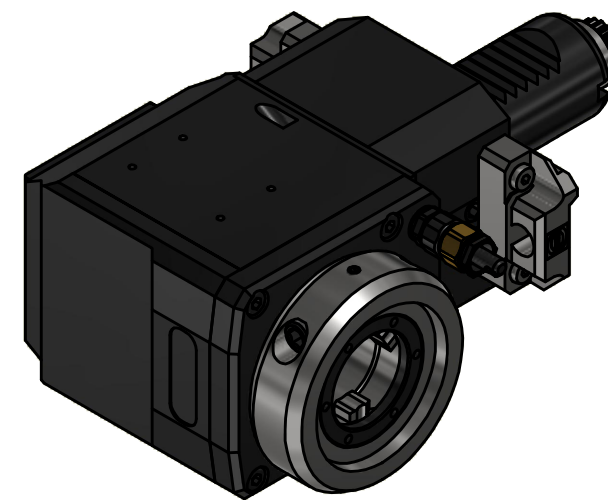
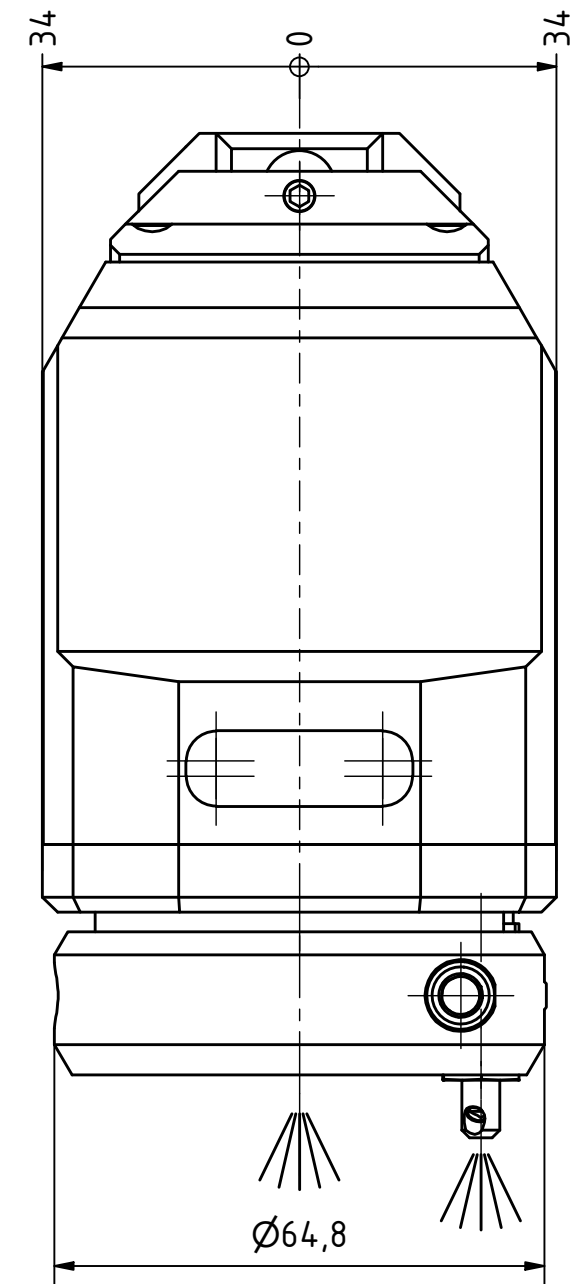
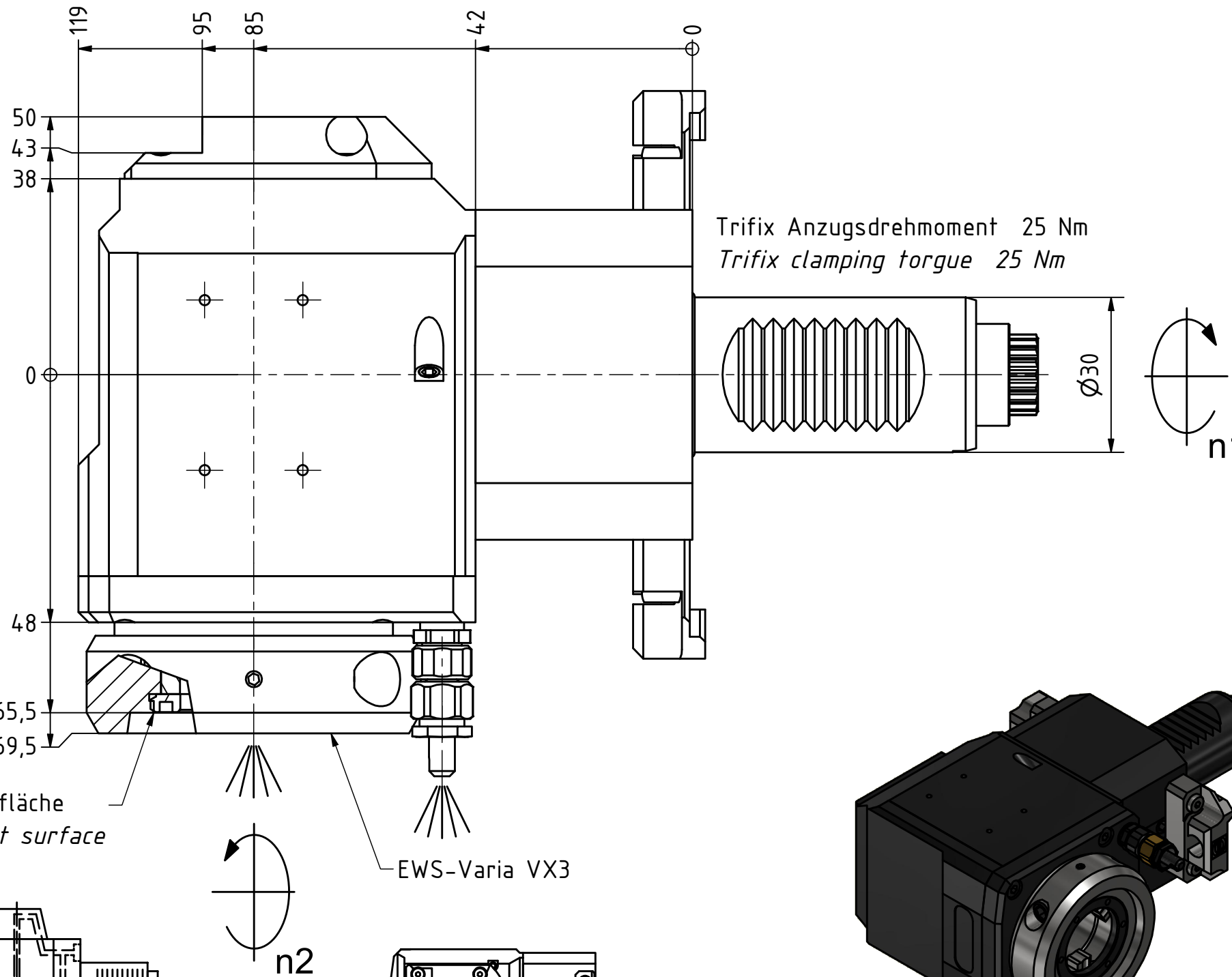
Polygon Joint



Coolant Management



Tech Details



Doppelverzahnung Lizenz Traub  
double tooth system licence Traub

Innen- und Aussenkuehlung / Inside and outside coolant supply  
Kuehlmittelfiltrierung < 50µ / coolant filtration < 50µ

Copyright **EWS Tool Technologies**  
Weitergabe und Vervielfaeltigung dieser Unterlage,  
Verwertung und Mitteilung ihres Inhalts nicht  
gestattet, soweit nicht ausdrucklich zugestanden.  
Zuwiderhandlungen verpflichten zu Schadenersatz.

Bemerkung - Note  
Für Trockenlauf geeignet!  
Use without coolant fluid allowed!

Technische Daten - technical data

Weight = 4.476 [kg]

Torque max. (M1/M2) = 32 / 32 [Nm]

Speed max. (n1/n2) = 8000 / 8000 [1/min]

Gear ratio (i)=n1:n2 = 1:1

Pressure (pmax) = 70 [bar]

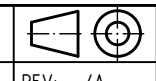
Benennung - Title

**Radial Bohr und Fräskopf**  
**Radial drilling and milling head**



Nr. - No.  
60.30VX3GT300RLIKDTFR#01

Technische Aenderungen vorbehalten!  
Subject to technical modifications!  
IDENT: DEWS242761



REV: -/A  
MNR.  
228230

