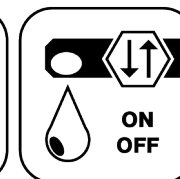




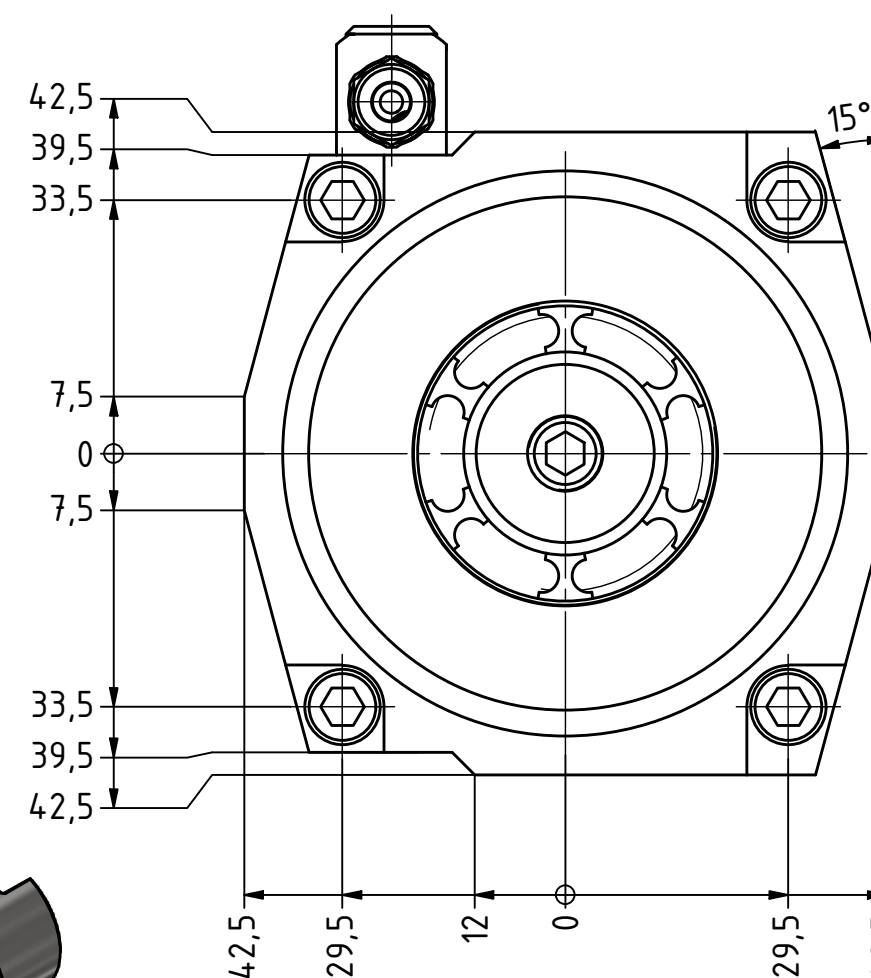
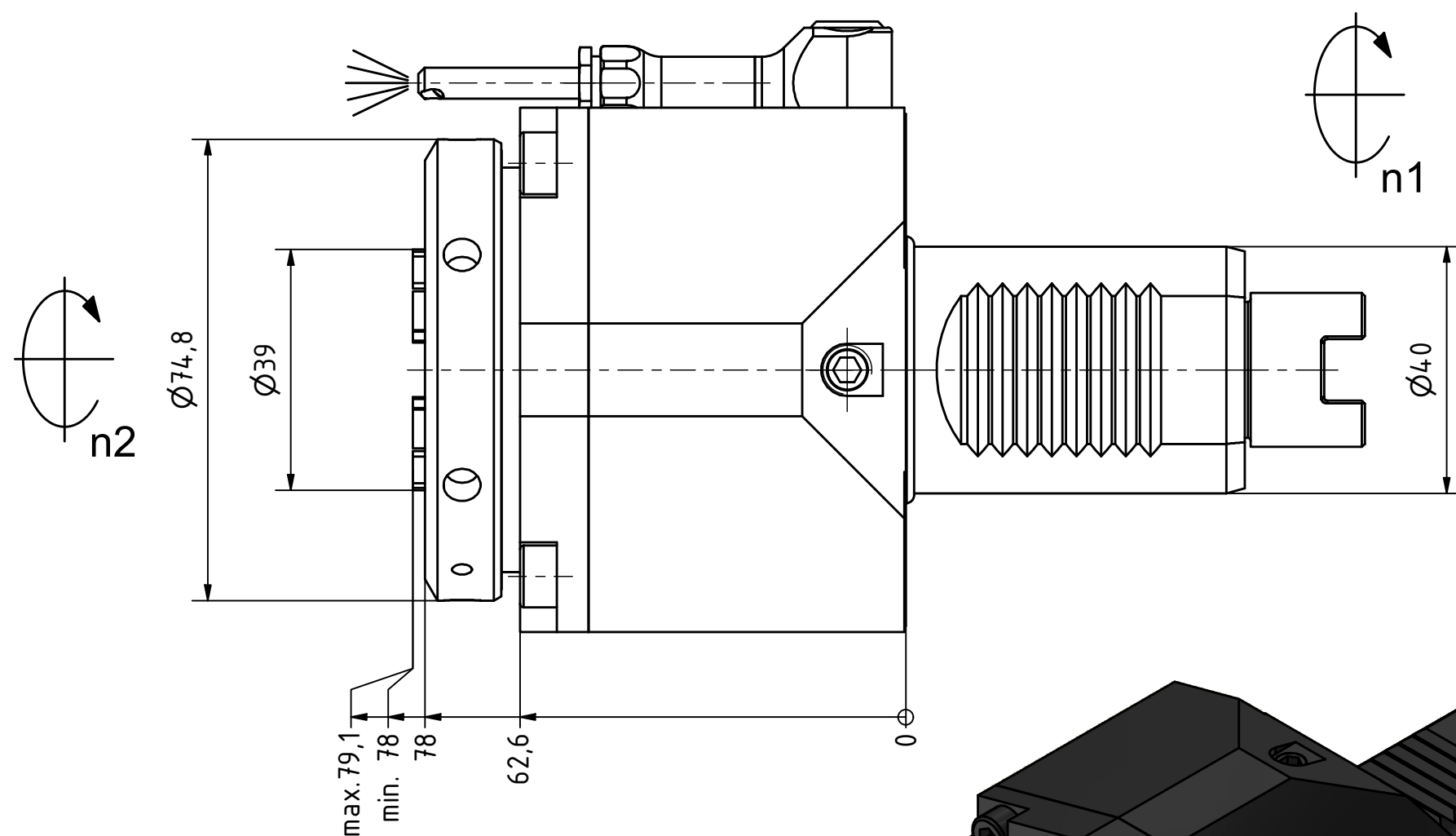
Butterfly  
Seal



Coolant  
Management

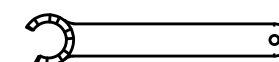
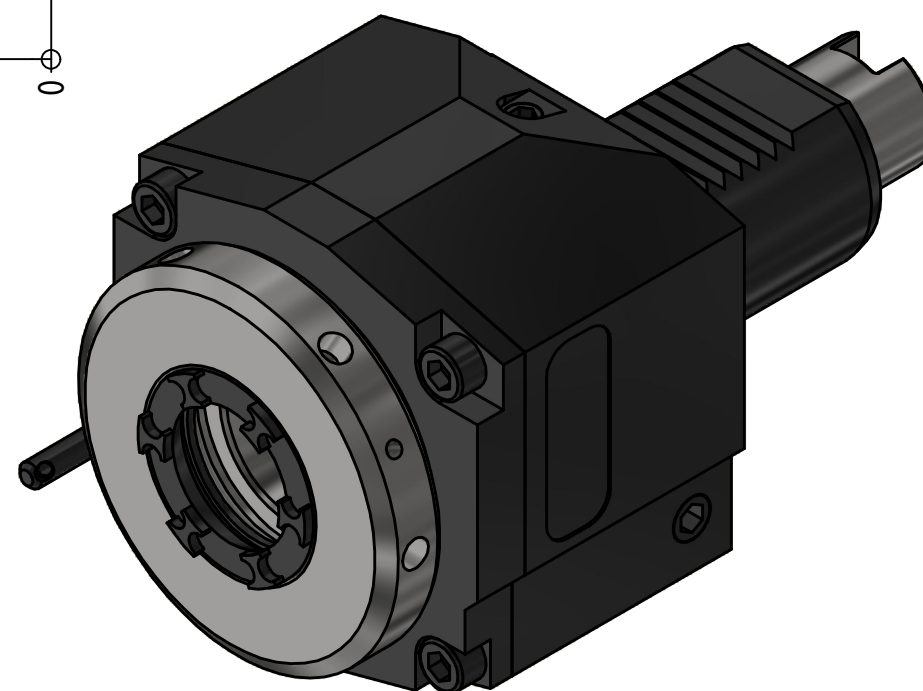


Tech  
Details

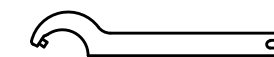


Spannzange / *collet* ER32 DIN6499  
Spannbereich / *clamping range*: 2,0 - 20,0

Gewindebohrzange / *tapping collet*  
ET-1-32 M5-M12



Spannzangenschlüssel für  
innenliegende Mutter  
*Clamping wrench for  
internal collet*  
232AX



Hakenschlüssel  
mit Zapfen  
*Hook wrench  
with fixed pin*  
DIN1810 B 68x75

Copyright **EWS Tool Technologies**  
Weitergabe und Vervielfältigung dieser Unterlage,  
Verwertung und Mitteilung ihres Inhalts nicht  
gestattet, soweit nicht ausdrücklich zugestanden.  
Zu widerhandlungen verpflichten zu Schadenersatz.

Bemerkung - *Note*

Technische Daten - *technical data*

Weight = 3.607 [kg]  
Torque max. (M1/M2) = 63 / 63 [Nm]  
Speed max. (n1/n2) = 6000 / 6000 [1/min]  
Gear ratio (i)=n1:n2 = 1:1

Benennung - *Title*

**Axial Bohr und Fräskopf**  
***Axial drilling and milling head***

**EWS**  
Tool Technologies

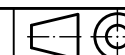
EWS Weigle GmbH & Co. KG  
Maybachstr. 1  
D-73066 Uhingen  
www.ews-tools.de

Technische Änderungen vorbehalten!  
*Subject to technical modifications!*

IDENT: DEWS256360

Nr. - *No.*

40.4032G300IM



REV: -/A

MNR.

227619

**QR**