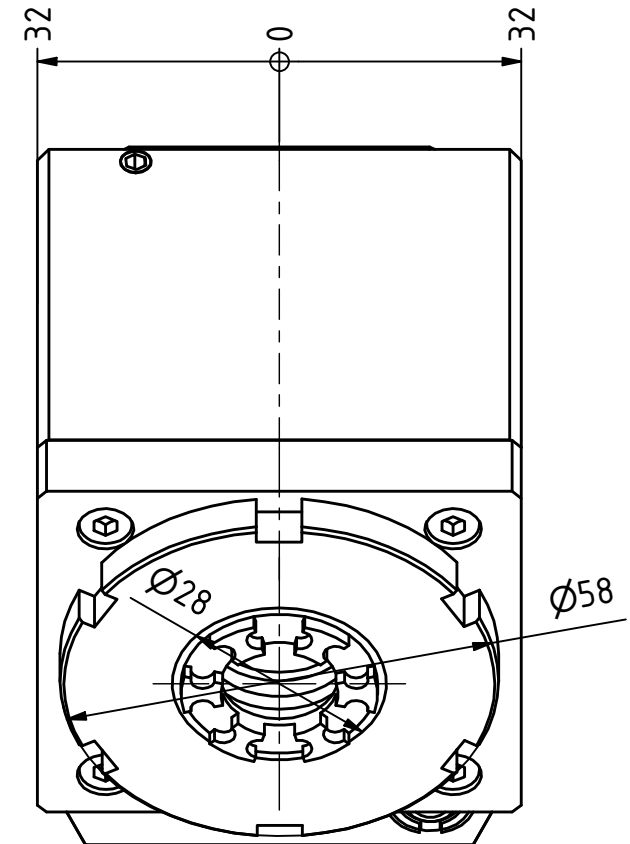
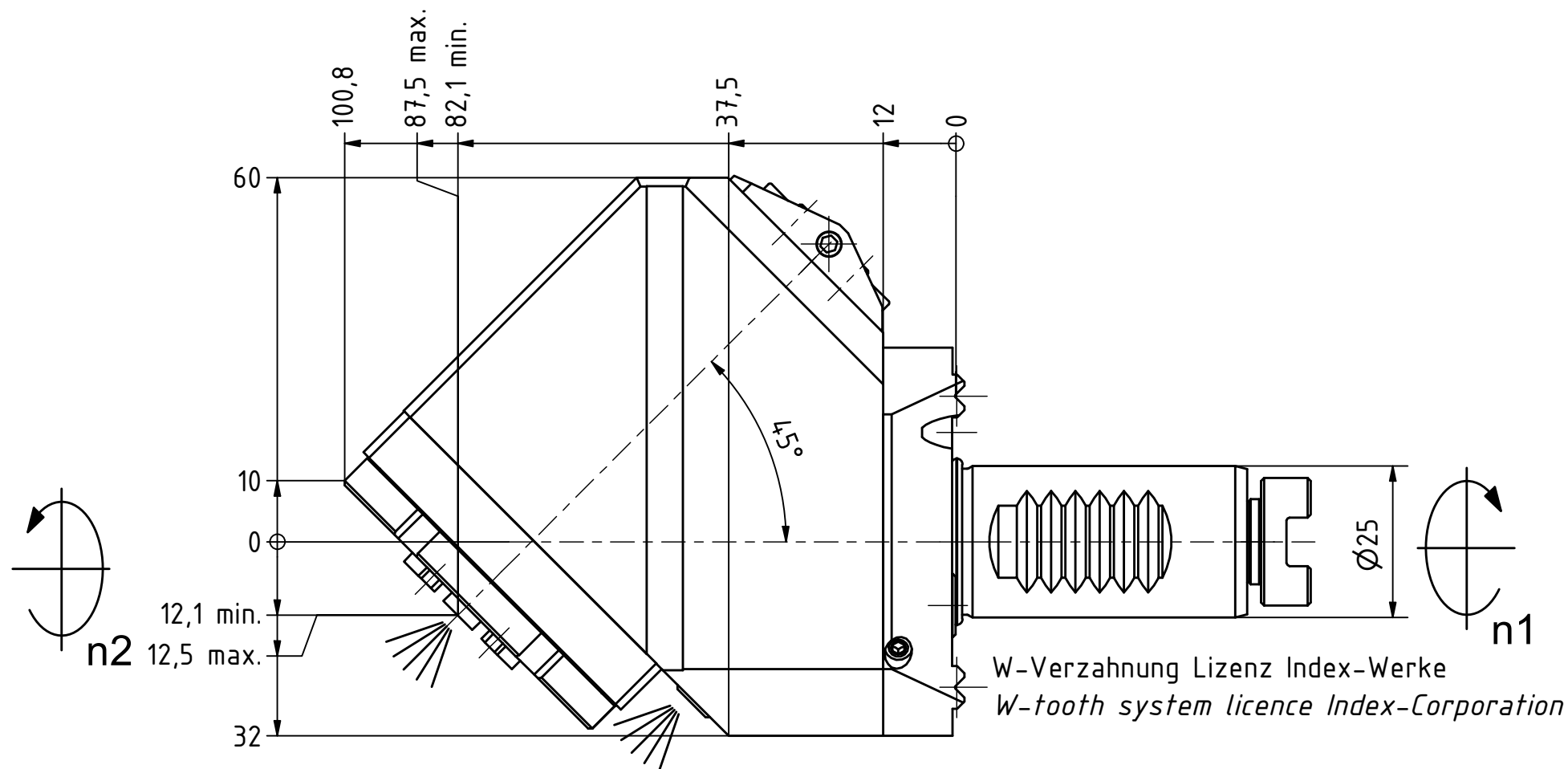




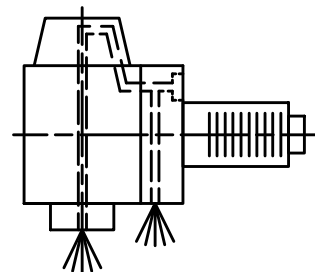
Ceramic Seal



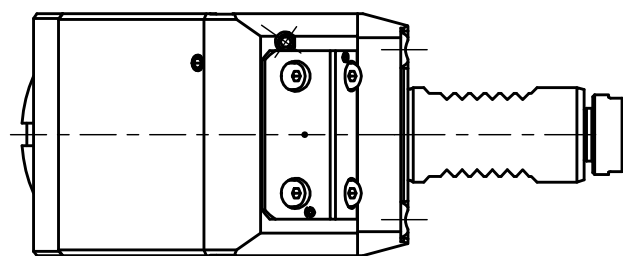
Tech Details



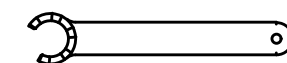
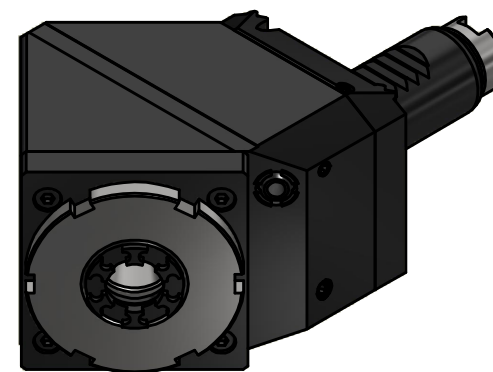
Spannzange / collet ER20 DIN6499  
Spannbereich / clamping range: 1,0 - 13,0



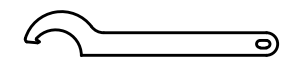
Innen- und Aussenkuehlung / Inside and outside coolant supply  
Kuehlmittelfiltrierung+50µ / coolant filtration+50µ



Doppelverzahnung Lizenz Traub  
double tooth system licence Traub



Spannzangenschlüssel für innenliegende Mutter  
Clamping wrench for internal collet  
220AX



Hakenschlüssel mit Nase  
Hook wrench with nose end  
DIN1810 A 58x62

Copyright **EWS Tool Technologies**  
Weitergabe und Vervielfaeltigung dieser Unterlage, Verwertung und Mitteilung ihres Inhalts nicht gestattet, soweit nicht ausdrucklich zugestanden. Zuwiderhandlungen verpflichten zu Schadenersatz.

Bemerkung - Note  
Für Trockenlauf geeignet!  
Use without coolant fluid allowed!

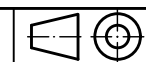
Technische Daten - technical data  
Weight = 2.926 [kg]  
Torque max. (M1/M2) = 25 / 25 [Nm]  
Speed max. (n1/n2) = 8000 / 8000 [1/min]  
Gear ratio (i)=n1:n2 = 1:1  
Pressure (pmax) = 70 [bar]

Benennung - Title  
**Radial Bohr und Fräskopf**  
**Radial drilling and milling head**



Nr. - No.  
**60.2520G200RLIKDWTW45IM**

Technische Aenderungen vorbehalten!  
Subject to technical modifications!  
IDENT: DEWS155377



REV: -/A

MNR.

**226840**

